

LARGEYACHT.CO



KIMANI

FOR SALE

BLUEGAME | 22.82 M (74.10 FT) | 2025

The missing link between yachting and sea.

KIMANI is an outstanding example of the Bluegame BG74, combining power, design, and versatility. Powered by twin Volvo Penta IPS 1350 engines, she delivers exceptional performance with effortless handling and efficiency, enhanced by a Seakeeper 18 stabilizer for superior comfort underway or at anchor.

ASKING PRICE

€ 3,790,000 (EX VAT)





KIMANI looks like no other yacht.

Accommodating six guests in three cabins, KIMANI unites the open-yacht experience with flybridge sophistication, offering expansive outdoor spaces and refined interiors.

The hull design is by Louis T. Codega, with exterior styling by Luca Santella and interior design by Luca Santella in collaboration with Zuccon International Project. Built in GRP, KIMANI features low engine hours, top specifications, and is presented in like-new condition, with all services up to date and ready for the season.



KIMANI



Key features

Competitively priced

Highest spec built

Stabilized

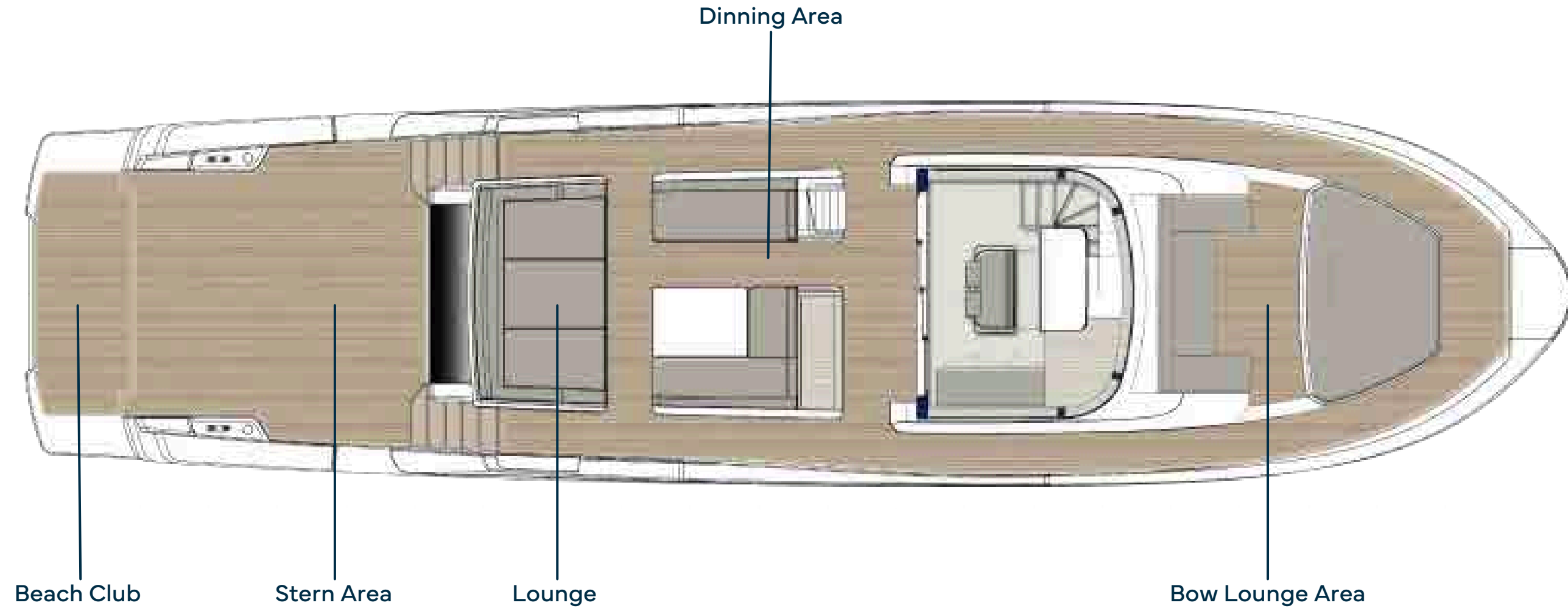
Low engine hours

Largest tender and toy carrying capacity in her category

Expansive outdoor spaces across three levels

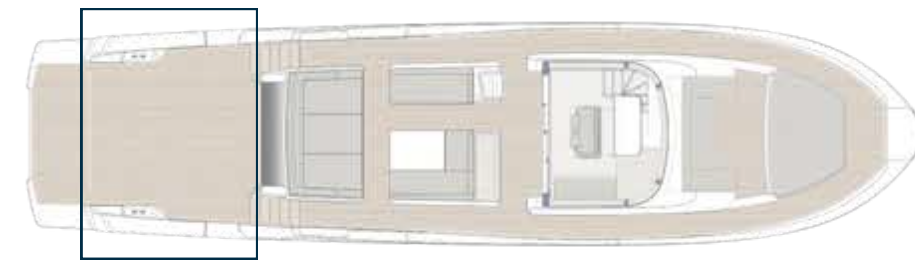


General arrangement



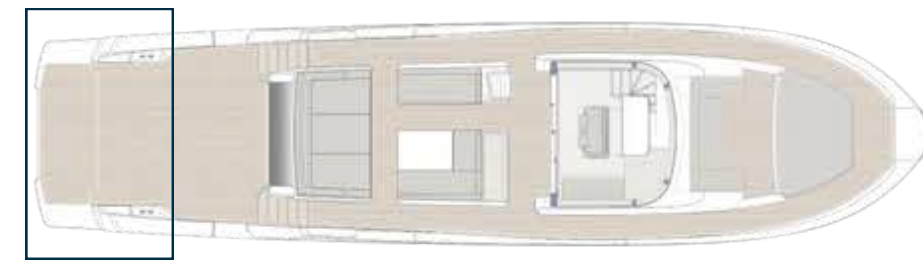
KIMANI

MAIN DECK / STERN AREA



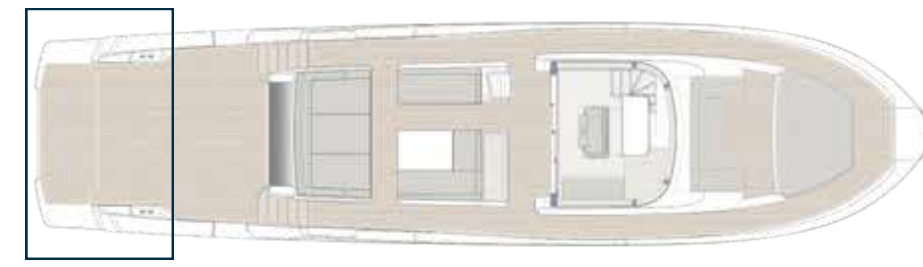
KIMANI

MAIN DECK / BEACH CLUB



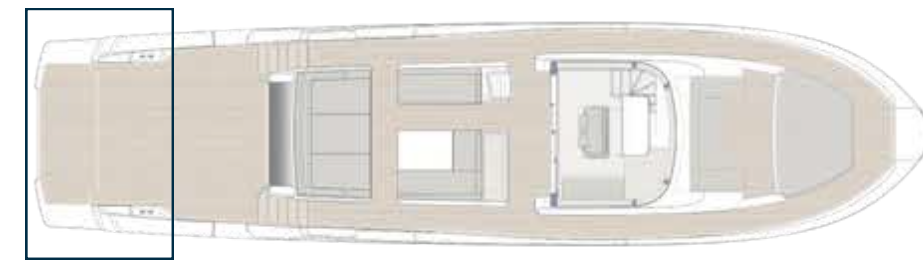
KIMANI

MAIN DECK / BEACH CLUB



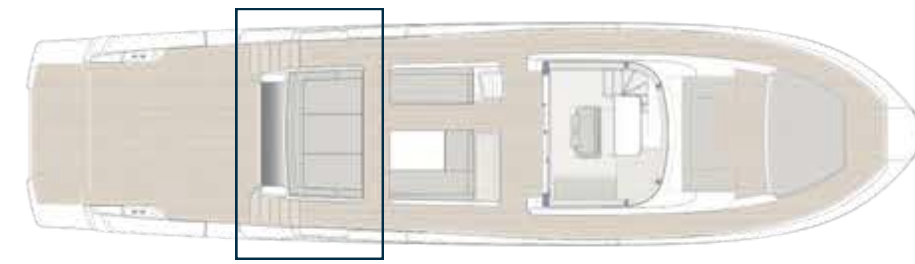
KIMANI

MAIN DECK / BEACH CLUB



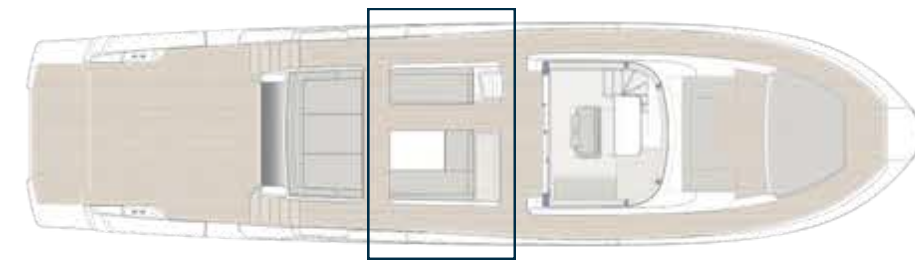
KIMANI

MAIN DECK / LOUNGE



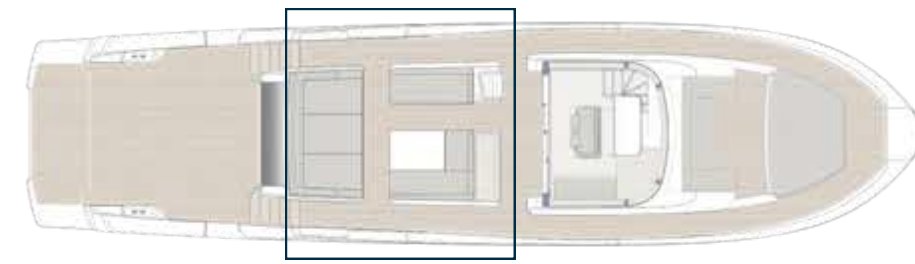
KIMANI

MAIN DECK / DINING AREA



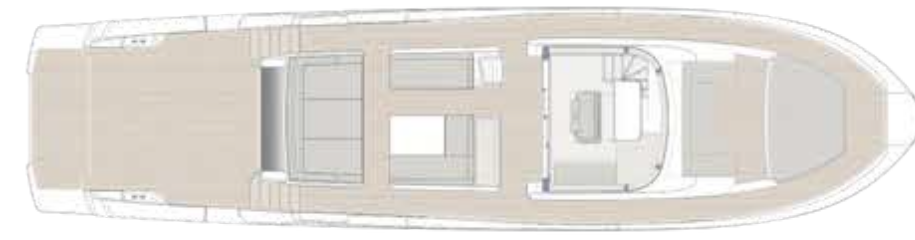
KIMANI

MAIN DECK / DINING & LOUNGE AREA



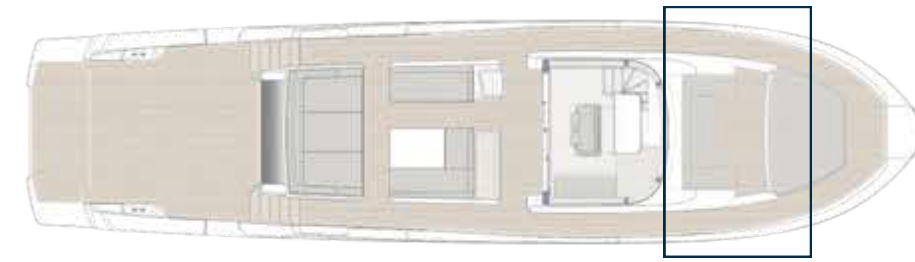
KIMANI

MAIN DECK / PORT SIDE



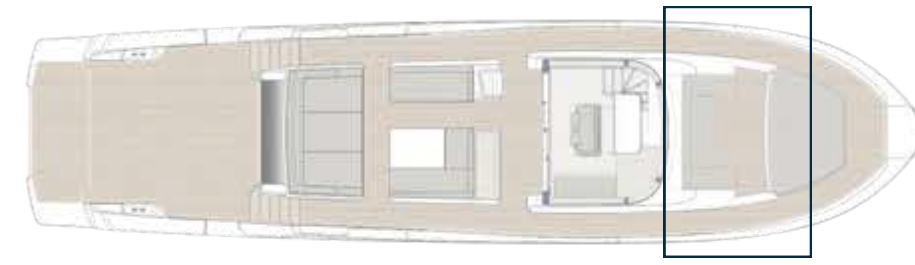
KIMANI

MAIN DECK / BOW LOUNGE AREA



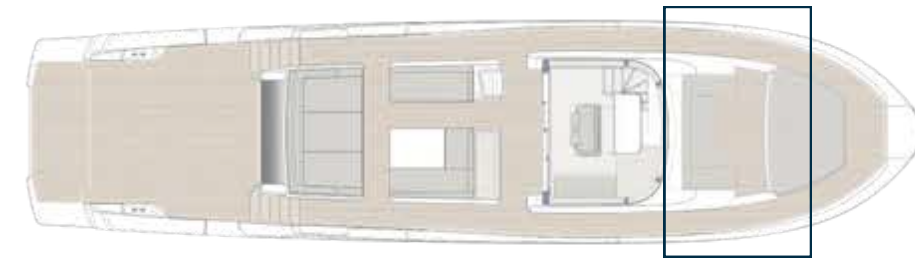
KIMANI

MAIN DECK / BOW LOUNGE AREA



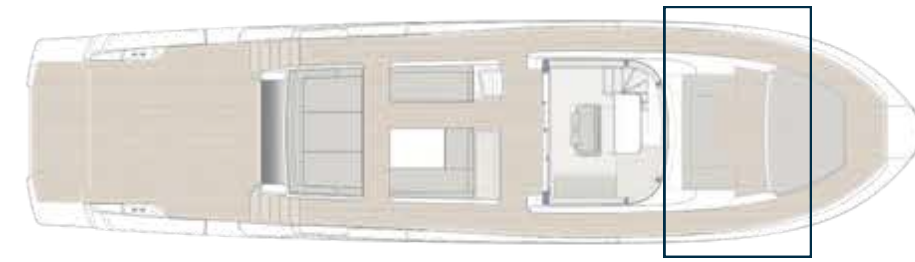
KIMANI

MAIN DECK / BOW LOUNGE AREA



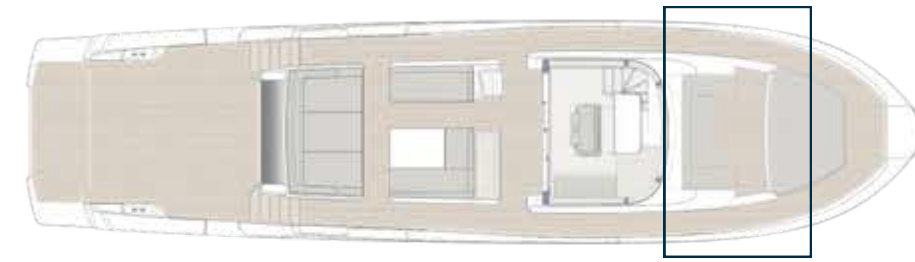
KIMANI

MAIN DECK / BOW LOUNGE AREA



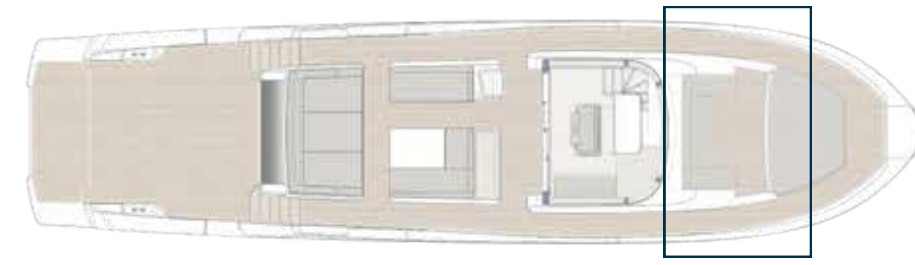
KIMANI

MAIN DECK / BOW LOUNGE AREA



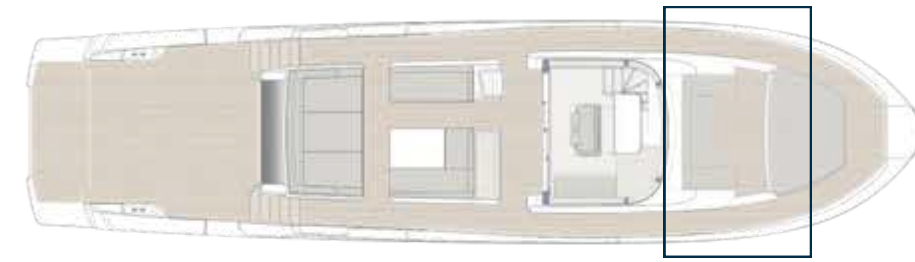
KIMANI

MAIN DECK / BOW LOUNGE AREA



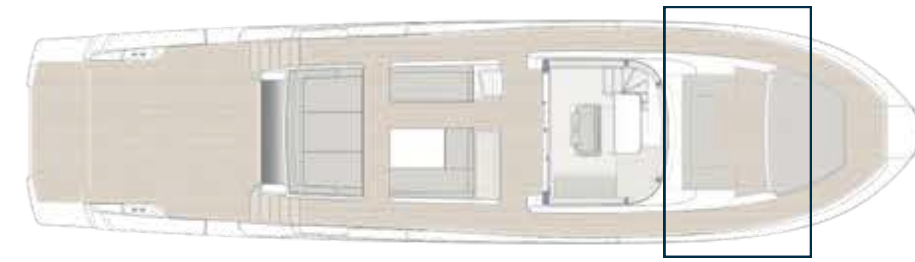
KIMANI

MAIN DECK / BOW LOUNGE AREA



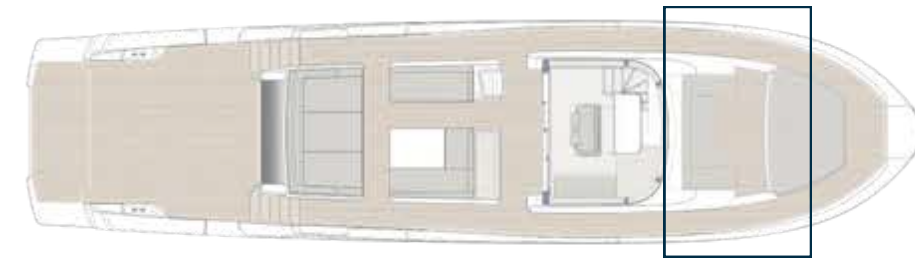
KIMANI

MAIN DECK / BOW LOUNGE AREA

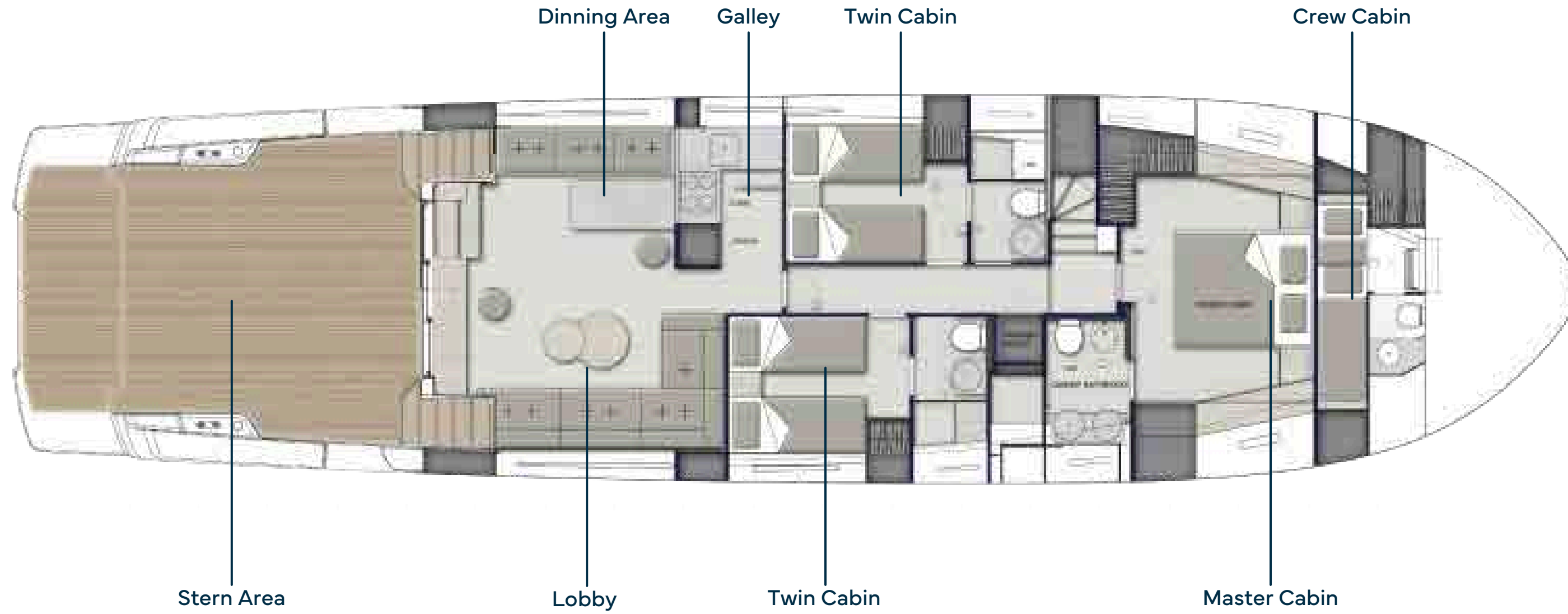


KIMANI

MAIN DECK / BOW LOUNGE AREA

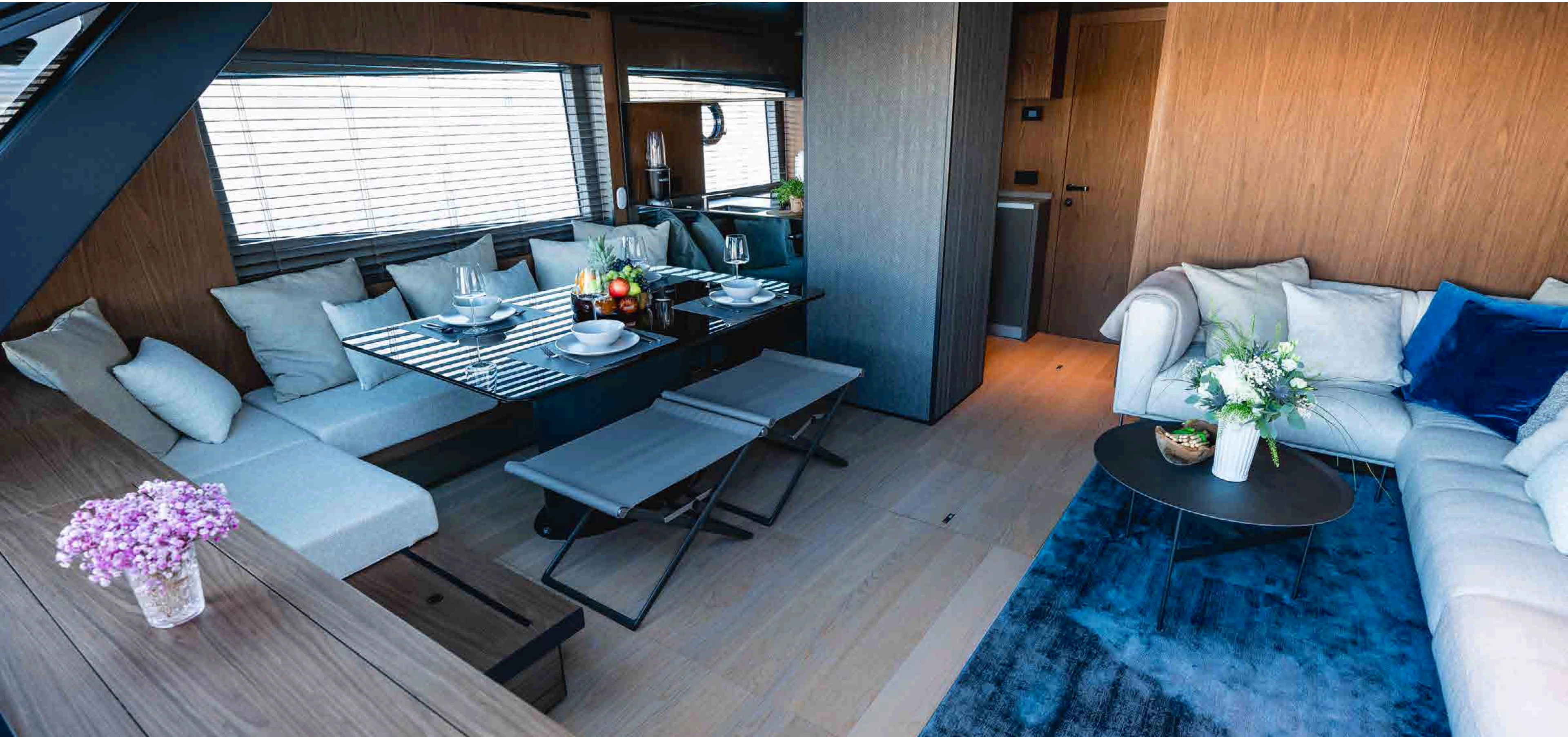


General arrangement



KIMANI

LOWER DECK / LOBBY & DINNING AREA



KIMANI

LOWER DECK / LOBBY & DINNING AREA



KIMANI

LOWER DECK / LOBBY



KIMANI

LOWER DECK / LOBBY



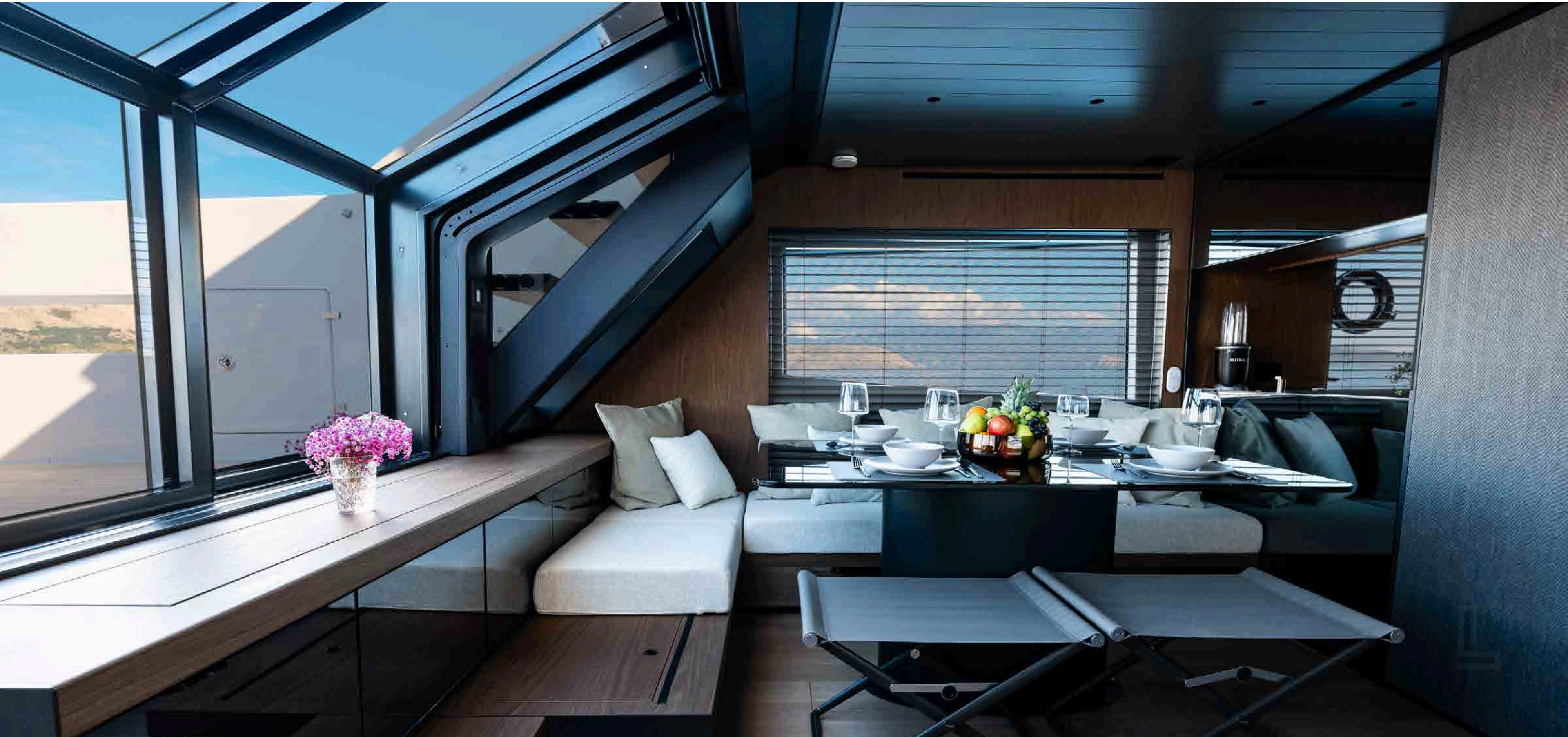
KIMANI

LOWER DECK / LOBBY



KIMANI

LOWER DECK / DINNING AREA



KIMANI

LOWER DECK / DINNING AREA



KIMANI

LOWER DECK / DINNING AREA



KIMANI

LOWER DECK / GALLEY



KIMANI

LOWER DECK / GALLEY



KIMANI

LOWER DECK / MASTER CABIN



KIMANI

LOWER DECK / MASTER CABIN



KIMANI

LOWER DECK / MASTER CABIN



KIMANI

LOWER DECK / MASTER CABIN



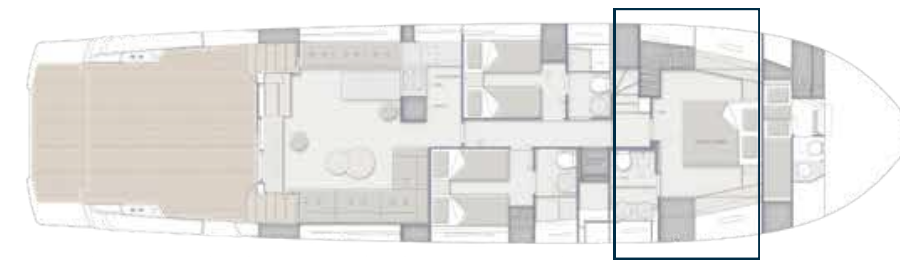
KIMANI

LOWER DECK / MASTER'S ENSUITE



KIMANI

LOWER DECK / MASTER'S ENSUITE



KIMANI

LOWER DECK / MASTER'S ENSUITE



KIMANI

LOWER DECK / TWIN CABIN



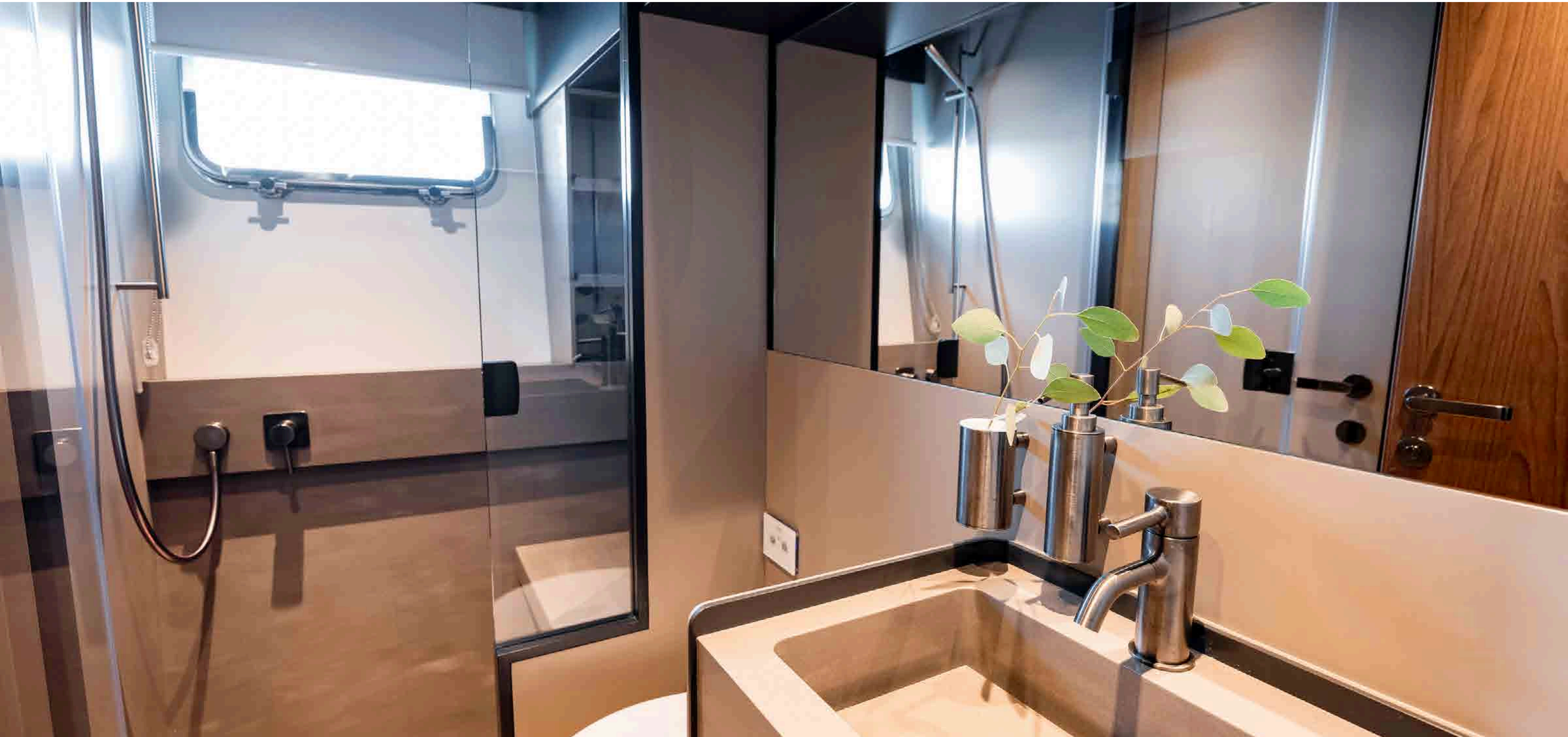
KIMANI

LOWER DECK / TWIN CABIN



KIMANI

LOWER DECK / TWIN'S ENSUITE



KIMANI

LOWER DECK / TWIN'S ENSUITE



KIMANI

LOWER DECK / TWIN CABIN



KIMANI

LOWER DECK / TWIN CABIN



KIMANI

LOWER DECK / TWIN'S ENSUITE



KIMANI

LOWER DECK / TWIN'S ENSUITE



KIMANI



SPECIFICATIONS

KIMANI

SPECIFICATIONS

CHARACTERISTICS

Name:	KIMANI
Builder:	Bluegame
Year Built:	2025
Type:	Motor Yacht
Hull No.:	16
Flag:	Croatia
Hull Design:	Louis T. Codega
Naval Architect:	Luca Santella
Exterior Designer:	Luca Santella
Interior Designer:	Luca Santella & Zuccon International Project
Construction:	GRP
Displacement ½ load:	46
Displacement:	49

DIMENSIONS

Length Overall:	22.82 m (74'10")
Length Waterline:	21.15 m (69'5")
Beam:	5.60 m (18'4")
Max Draft:	1.60 m (5'32")





SPEED & RANGE UNDER POWER

Maximum Speed:	30 Knots
Cruising Speed:	26 Knots
Range:	400 nm

CAPACITIES

Accommodation:	6 guests in 3 cabins
Crew:	1 crew in 1 cabin
Fuel:	4000 litres / 1056 US gallons
Fresh water:	1000 litres / 264 US gallons
Black water:	330 litres / 87 US gallons

ACCOMMODATION

Owner:	1 x Master cabin
Guest:	2 x Twin cabins (Starboard twin with sliding beds)
Crew:	1 x Crew cabin

MECHANICAL EQUIPMENT

Engines:	2 x Volvo Penta IPS 1350 D13
Power output:	2 x 1,000 hp / 735 kW each
Engine hours:	209 hours as of April 2026
Generators:	1 x 20.5 KW Kohler
Generator hours:	250 hours as of April 2026
Gearbox:	IPS Pod Drive
Rudder angle y:	Rudder angle indicator
Steering system:	Seakeeper 18
Thruster:	Bow thruster (210kgf)
Shore power:	Shore power connection (230 V, 63 Ah, 15 m cable)
Water maker:	180 litres / hours (47 US gallons)





NAVIGATION EQUIPMENT

Chart plotter:	3 × Volvo Glass Cockpit 16" multifunction displays
AIS:	Garmin AIS transceiver (Rx/Tx)
EVC:	Electronic engine control
DPS:	Dynamic positioning system (Volvo Penta)
IPS controller:	Dual joystick control
Rudder:	Rudder angle indicator
Spotlights:	Directional spotlight with remote control
Trim tabs:	Auto trim tabs

COMMUNICATION EQUIPMENT

VHF:	Garmin DSC VHF radio
-------------	----------------------

DECK EQUIPMENT

Anchor windlasses:	Electric windlass (2,300 W)
Anchors:	50 kg stainless steel Bruce-type
Anchor chains:	100 m galvanized chain (12mm)
Boat crane & davits:	Hydraulic crane (starboard, 500 kg lifting capacity)
Foredeck:	Hard top with electrical blades
Mooring Winches:	2 x stern winches (1,700 W) 1 x bow winch (1,700 W)
Cleats:	2 x folding cleats 4 x fixed cleats with fairleads



INTERIOR LAYOUT & FEATURES

Main Deck:	Lower deck salon with transformable dining table (up/down system, up to 8 guests) Up/down TV system in lower deck salon
Interior Furnishings:	Lower Deck Salon L-shaped Flexform Groundpiece sofa (Edison 914) Time & Style Lotus Moon oak coffee table Medium grey carpet (Coren Pantheon Ice) 2 × Living Divani Nina stools Fabric bench (Glamour Delirium 02) Decorative cushions (Rubelli & Zimmer + Rohde fabrics) Owner & Guest Cabins Bedspreads (Zimmer + Rohde Focus 904) Decorative cushions (Zimmer + Rohde Nelson series) Custom moquette carpeting (orange-beige tone)

ENTERTAINMENT EQUIPMENT

General:	Exterior audio system with 6 speakers and subwoofer TV lift systems (upper cockpit & lower deck salon)
-----------------	---



GALLEY & LAUNDRY EQUIPMENT

Galley:	Electric hot plate (Teppanyaki in wet bar) Wine cooler
----------------	---

SECURITY & SAFETY EQUIPMENT

Safety:	Courtesy lighting throughout exterior areas
Security:	3 cameras (2 × engine room, 1 × cockpit) Horn
Fire fighting:	Fire extinguishing system

TENDERS & WATER-SPORTS EQUIPMENT

Tenders:	Agilis 305 Jet tender
Toys:	Sea-Doo RXP-X RS 325

KIMANI

Disclaimer This document is not contractual. All specifications are given in good faith and offered for informational purposes only. The publisher and company do not warrant or assume any legal liability or responsibility for the accuracy, completeness, or usefulness of any information and/or images displayed. Yacht inventory, specifications and prices are subject to change without prior notice. None of the text and/or images used in this brochure may be reproduced without written consent from the publisher.

LARGEYACHT.CO

**FOR INQUIRIES &
MORE INFORMATION CONTACT**

MARTIN BOUILLY

Sales Broker

M: +337 680 867 622 | **E:** mb@largeyacht.co

O: 25 Boulevard Albert 1er, 98000 Monaco

www.largeyacht.co

