



# KIMANI

FOR SALE

BLUEGAME | 22.82 M (74.10 FT) | 2025

# The missing link between yachting and sea.

KIMANI is an outstanding example of the Bluegame BG74, combining power, design, and versatility. Powered by twin Volvo Penta IPS 1350 engines, she delivers exceptional performance with effortless handling and efficiency, enhanced by a Seakeeper 18 stabilizer for superior comfort underway or at anchor.

---

## ASKING PRICE

**€ 3,790,000 (EX VAT)**





## KIMANI looks like no other yacht.

Accommodating six guests in three cabins, KIMANI unites the open-yacht experience with flybridge sophistication, offering expansive outdoor spaces and refined interiors.

The hull design is by Louis T. Codega, with exterior styling by Luca Santella and interior design by Luca Santella in collaboration with Zuccon International Project. Built in GRP, KIMANI features low engine hours, top specifications, and is presented in like-new condition, with all services up to date and ready for the season.



KIMANI



# Key features

Competitively priced

---

Highest spec built

---

Stabilized

---

Low engine hours

---

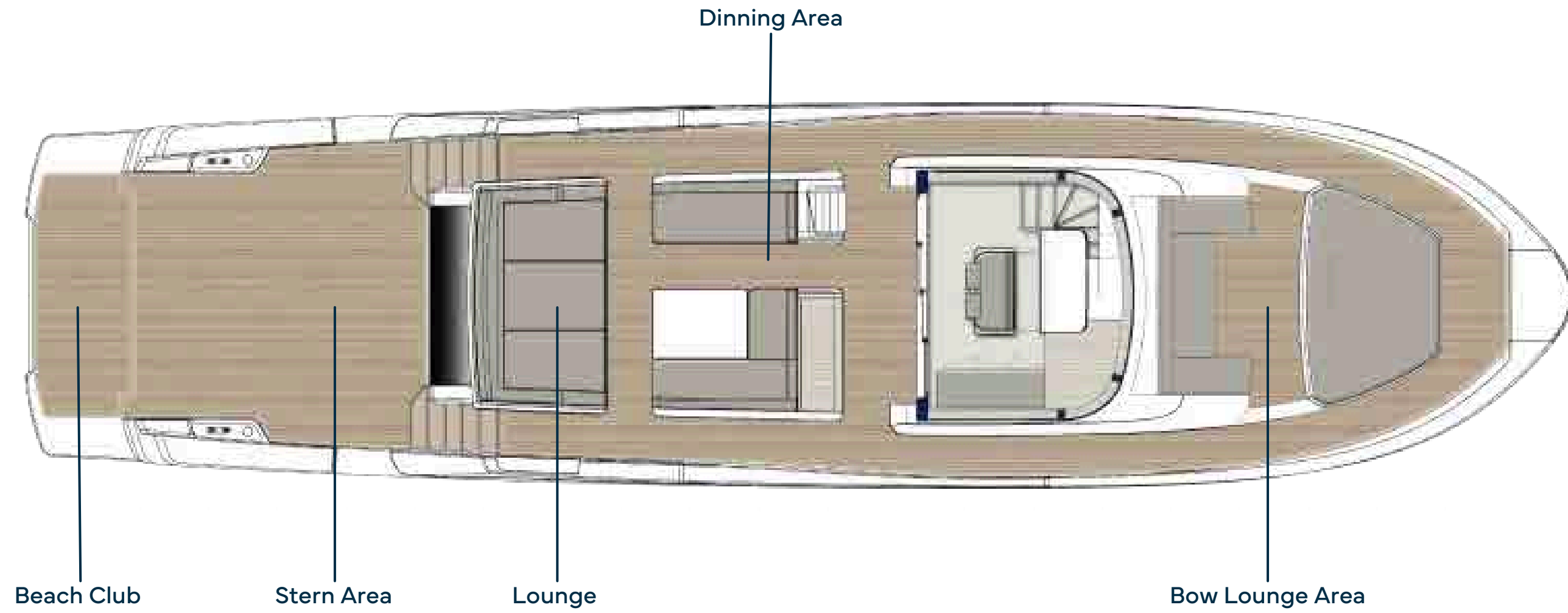
Largest tender and toy carrying capacity in her category

---

Expansive outdoor spaces across three levels

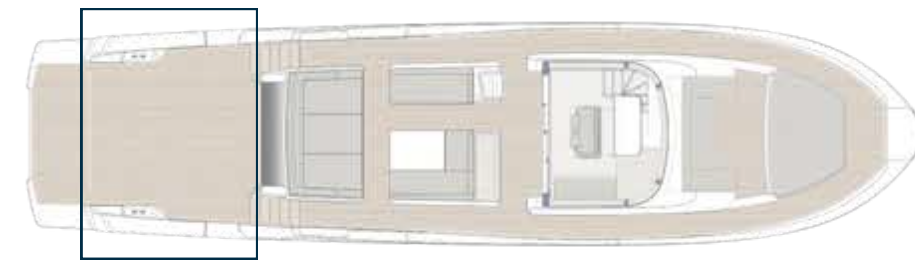


# General arrangement



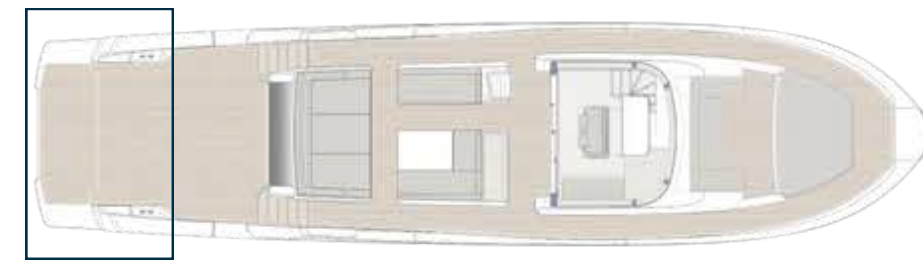
KIMANI

MAIN DECK / STERN AREA



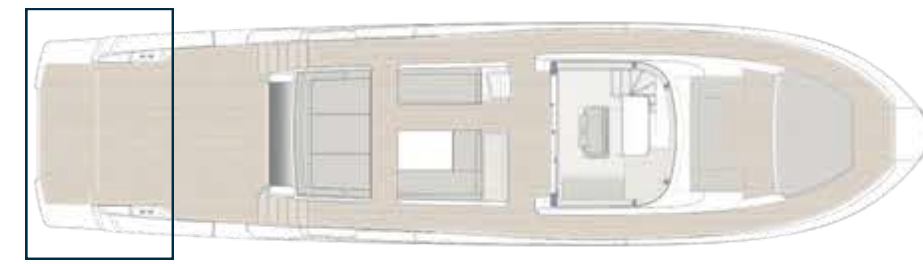
KIMANI

MAIN DECK / BEACH CLUB



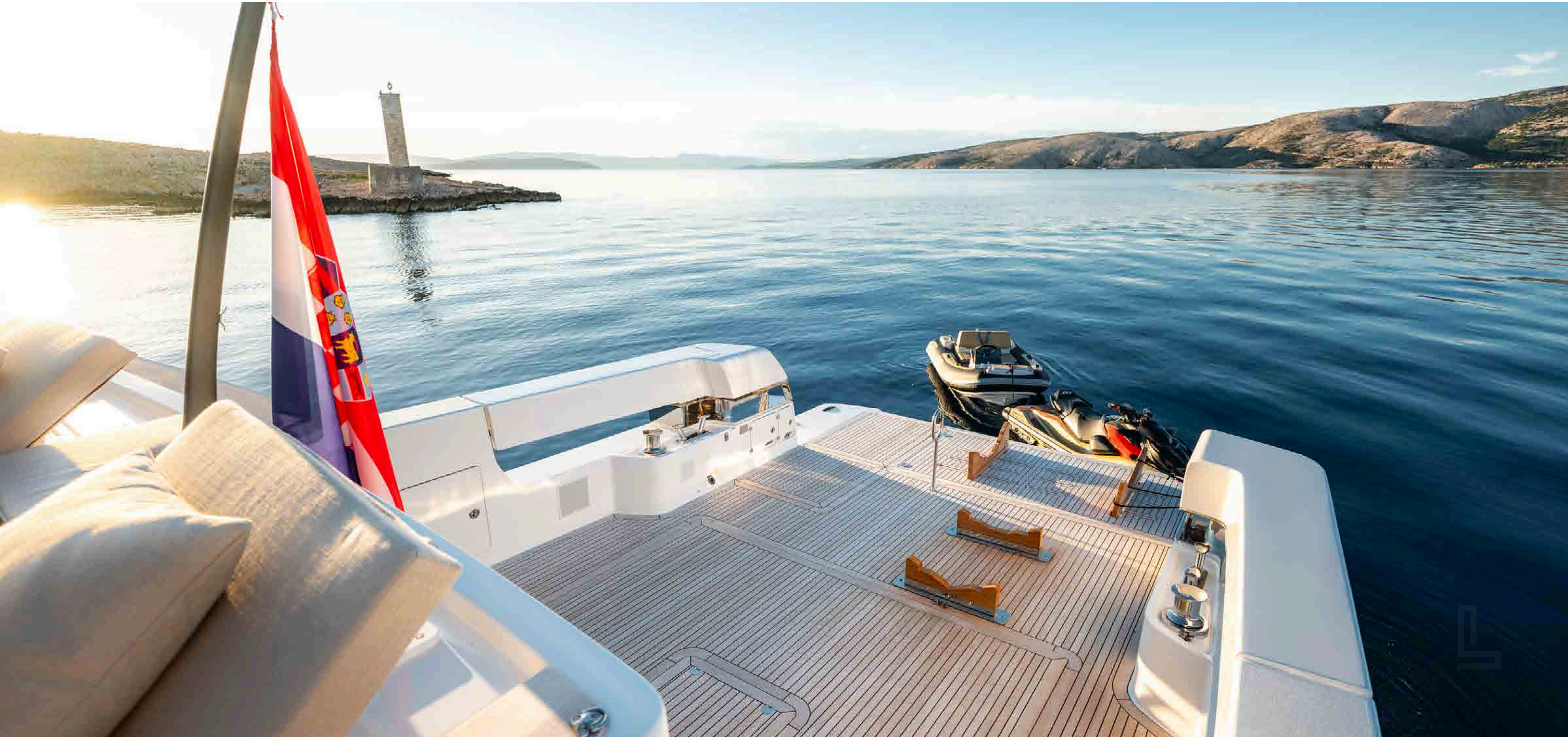
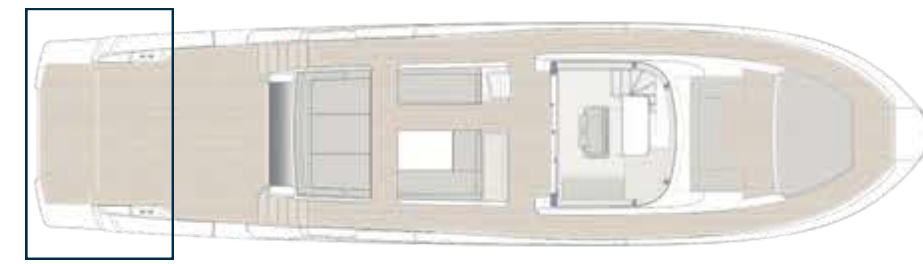
KIMANI

MAIN DECK / BEACH CLUB



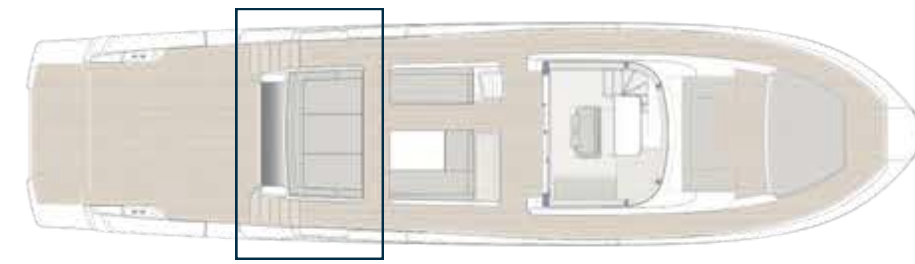
KIMANI

MAIN DECK / BEACH CLUB



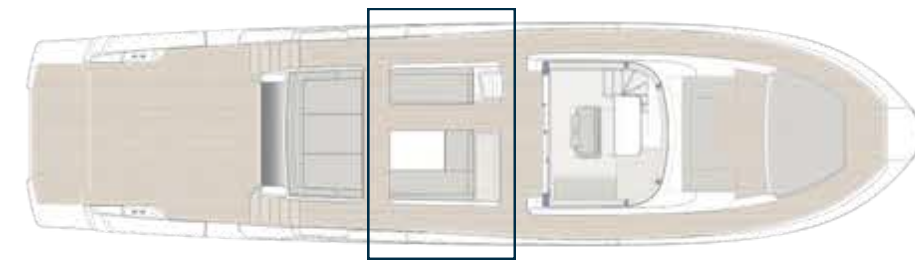
KIMANI

MAIN DECK / LOUNGE



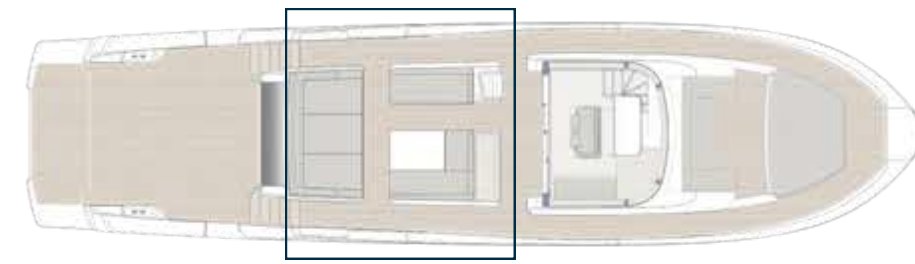
KIMANI

MAIN DECK / DINING AREA



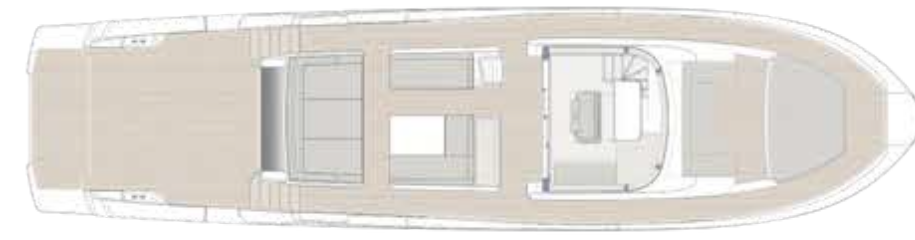
KIMANI

MAIN DECK / DINING & LOUNGE AREA



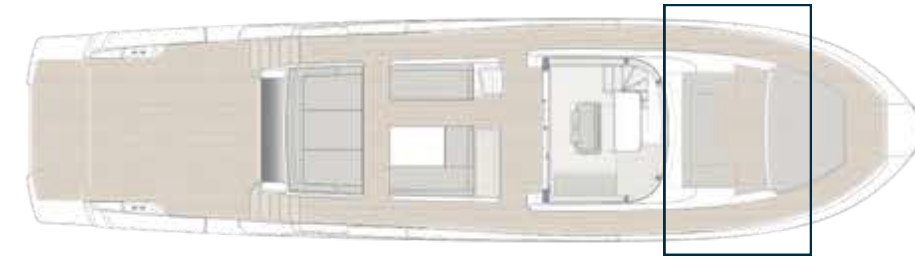
KIMANI

MAIN DECK / PORT SIDE



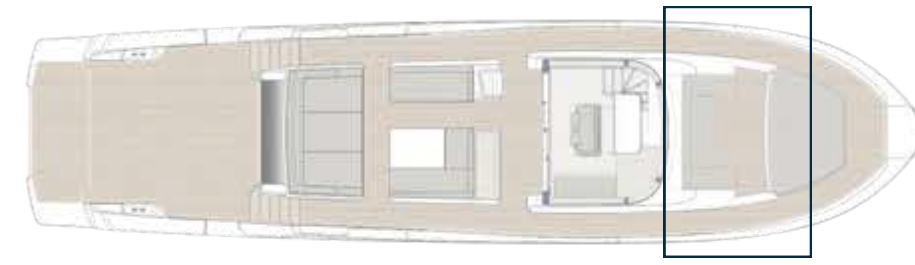
KIMANI

MAIN DECK / BOW LOUNGE AREA



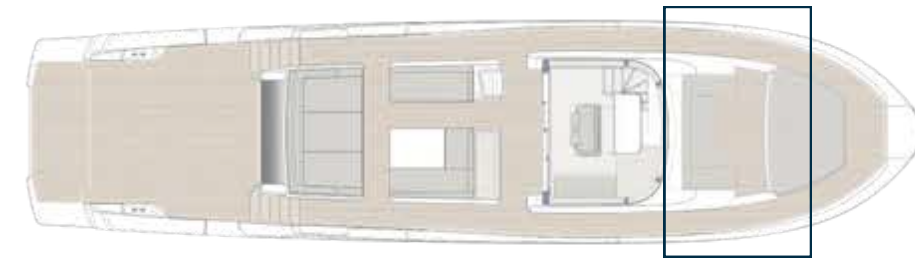
KIMANI

MAIN DECK / BOW LOUNGE AREA



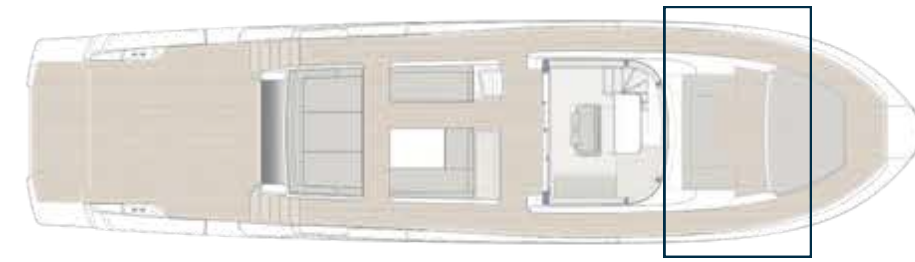
KIMANI

MAIN DECK / BOW LOUNGE AREA



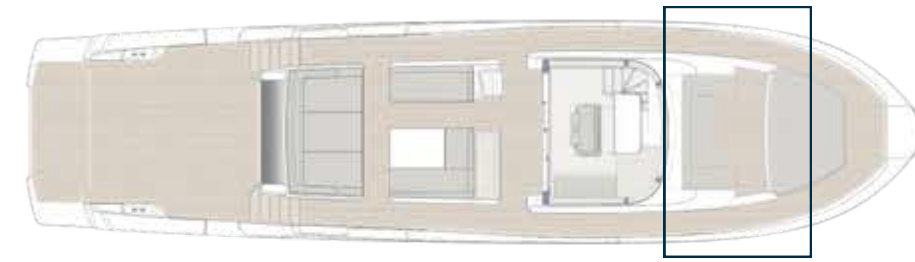
KIMANI

MAIN DECK / BOW LOUNGE AREA



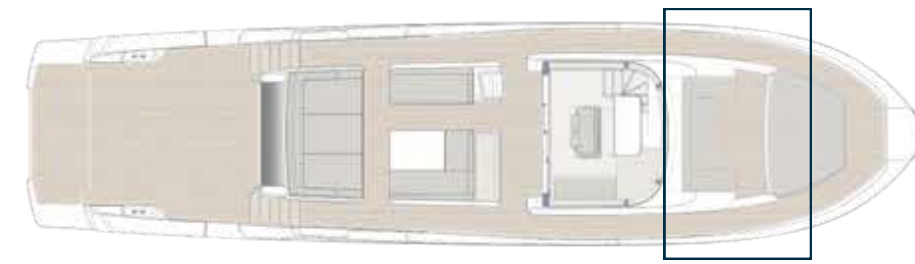
KIMANI

MAIN DECK / BOW LOUNGE AREA



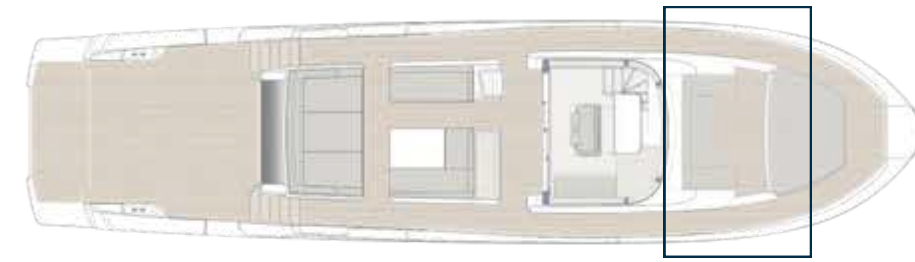
KIMANI

MAIN DECK / BOW LOUNGE AREA



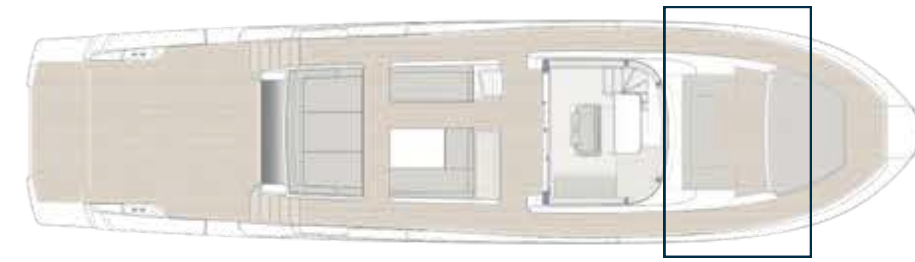
KIMANI

MAIN DECK / BOW LOUNGE AREA



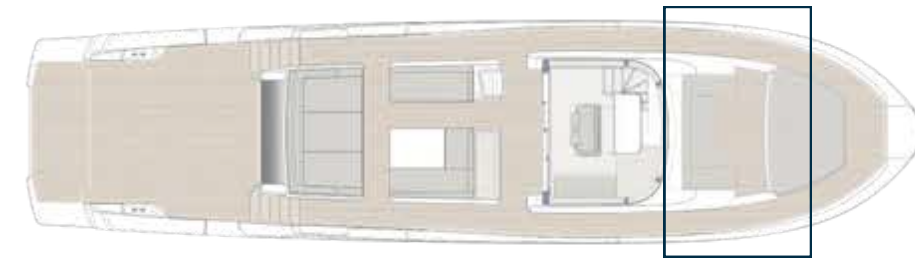
KIMANI

MAIN DECK / BOW LOUNGE AREA

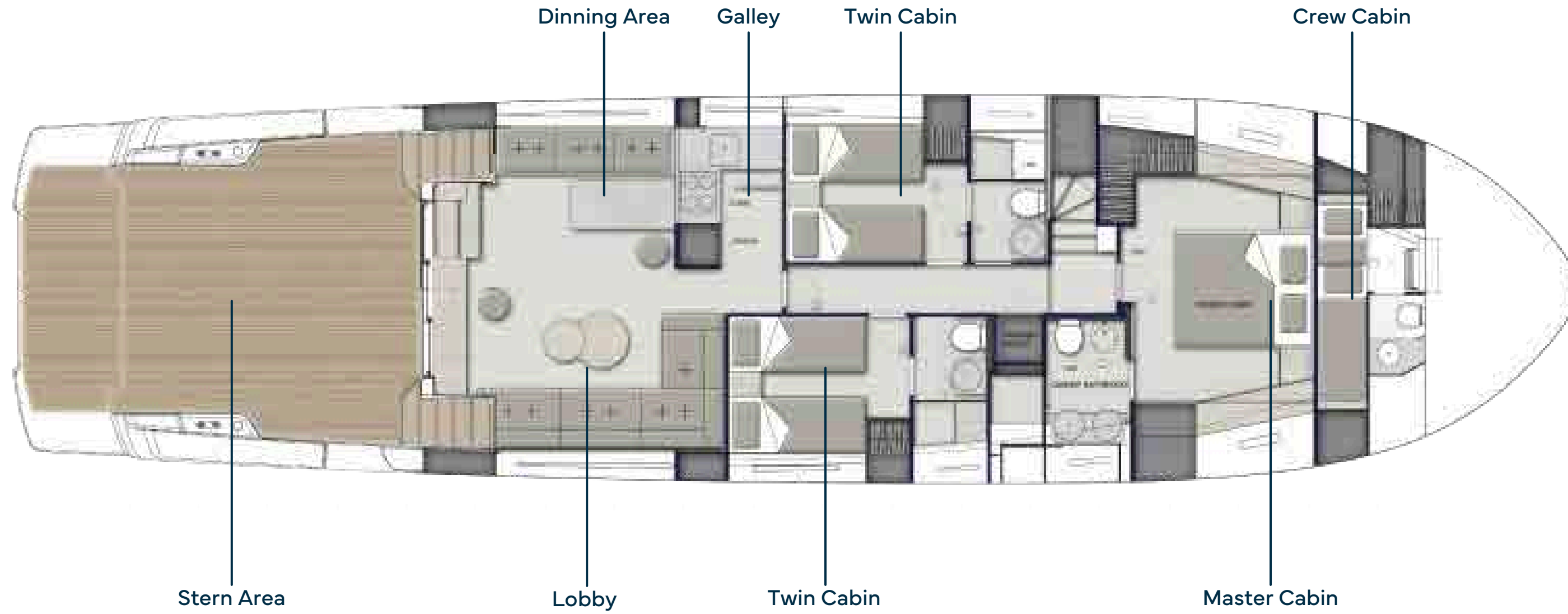


KIMANI

MAIN DECK / BOW LOUNGE AREA

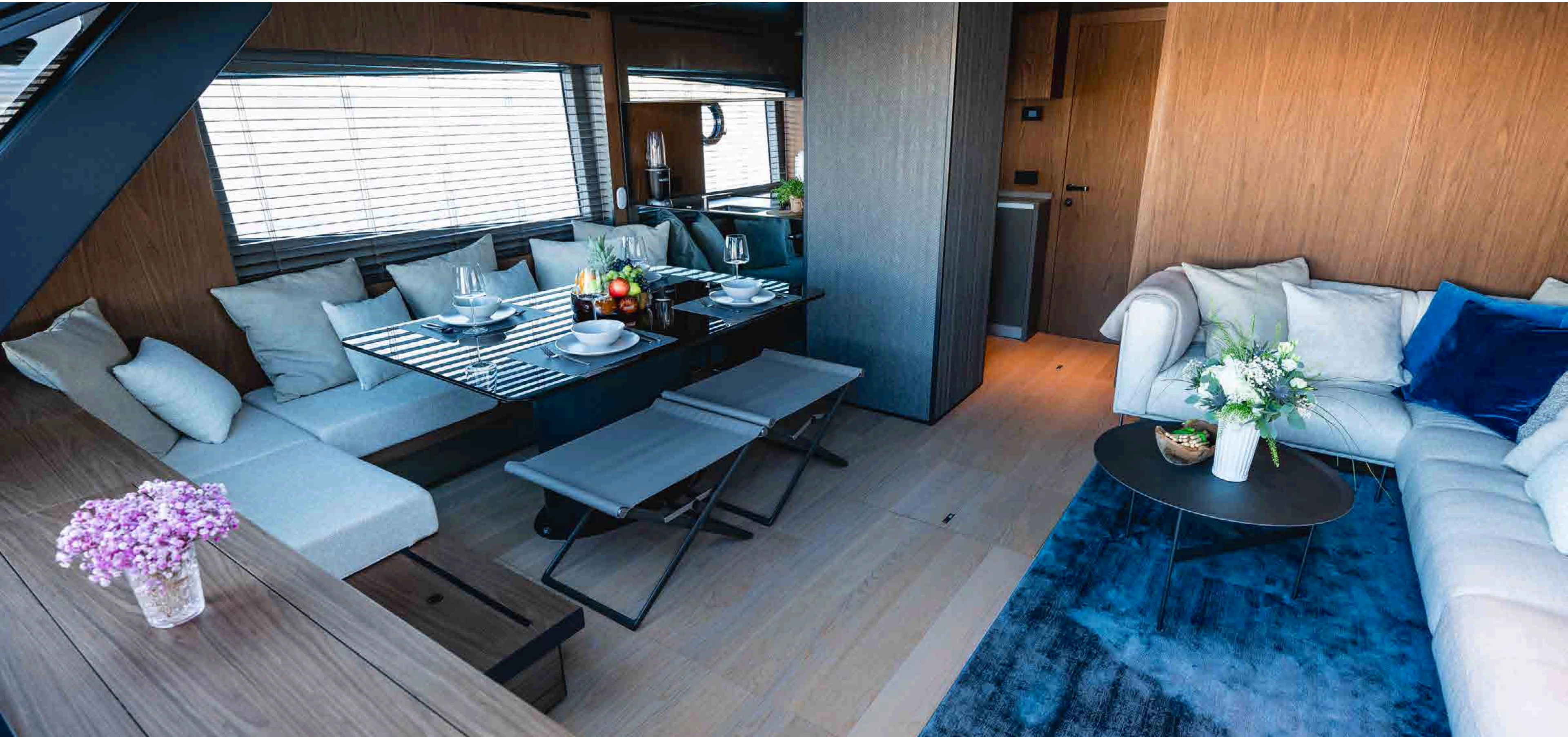


# General arrangement



KIMANI

LOWER DECK / LOBBY & DINNING AREA



KIMANI

LOWER DECK / LOBBY & DINNING AREA



KIMANI

LOWER DECK / LOBBY



KIMANI

LOWER DECK / LOBBY



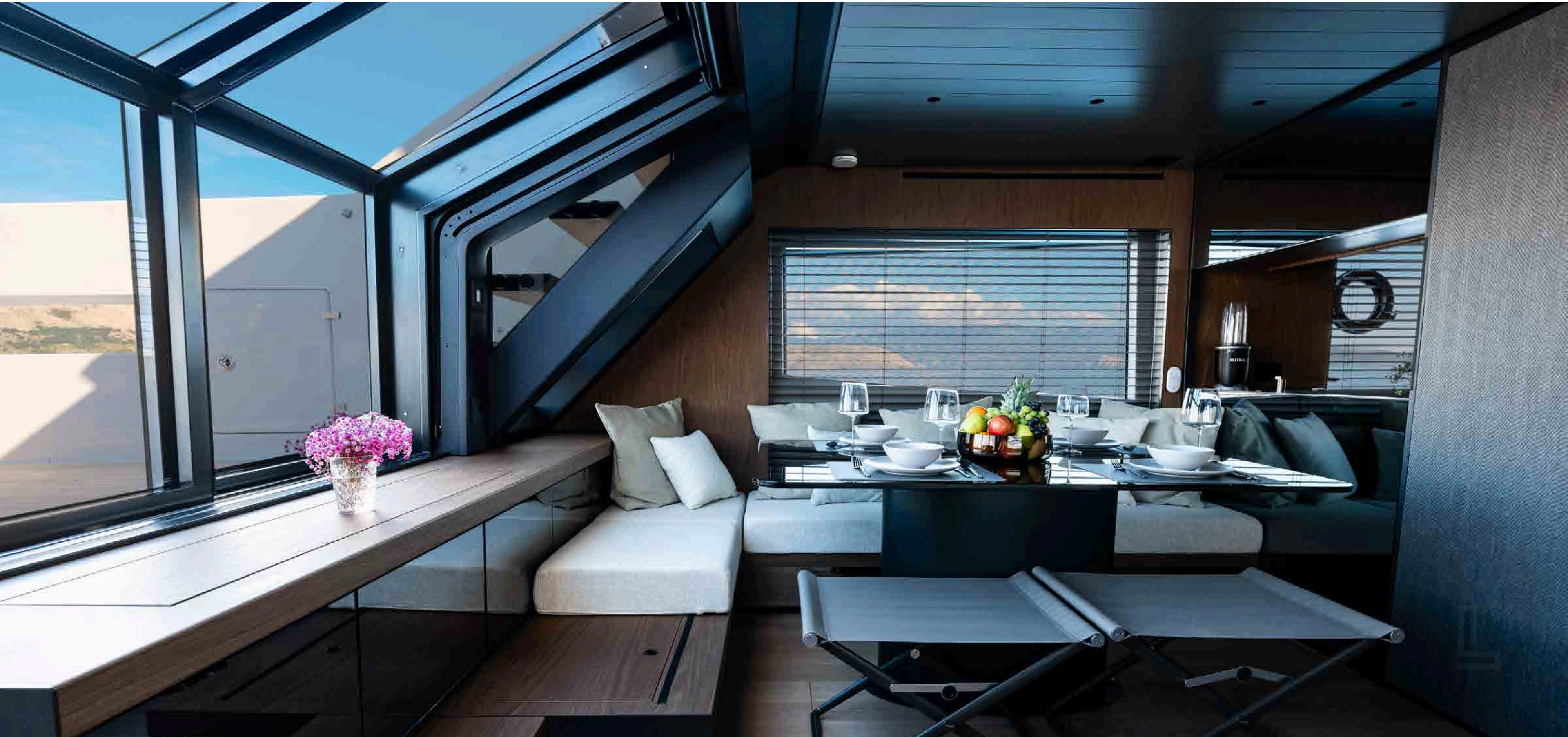
KIMANI

LOWER DECK / LOBBY



KIMANI

LOWER DECK / DINNING AREA



KIMANI

LOWER DECK / DINNING AREA



KIMANI

LOWER DECK / DINNING AREA



KIMANI

LOWER DECK / GALLEY



KIMANI

LOWER DECK / GALLEY



KIMANI

LOWER DECK / MASTER CABIN



KIMANI

LOWER DECK / MASTER CABIN



KIMANI

LOWER DECK / MASTER CABIN



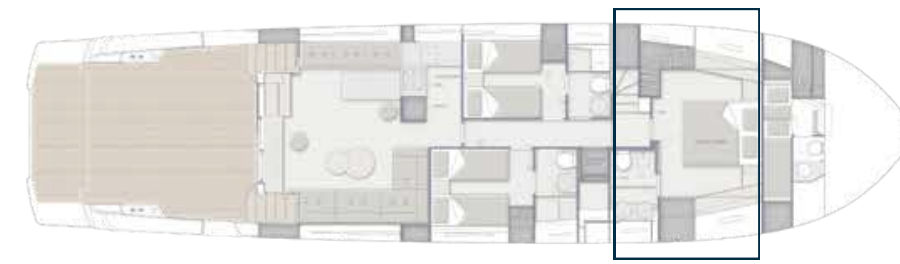
KIMANI

LOWER DECK / MASTER CABIN



KIMANI

LOWER DECK / MASTER'S ENSUITE



KIMANI

LOWER DECK / MASTER'S ENSUITE



KIMANI

LOWER DECK / MASTER'S ENSUITE



KIMANI

LOWER DECK / TWIN CABIN



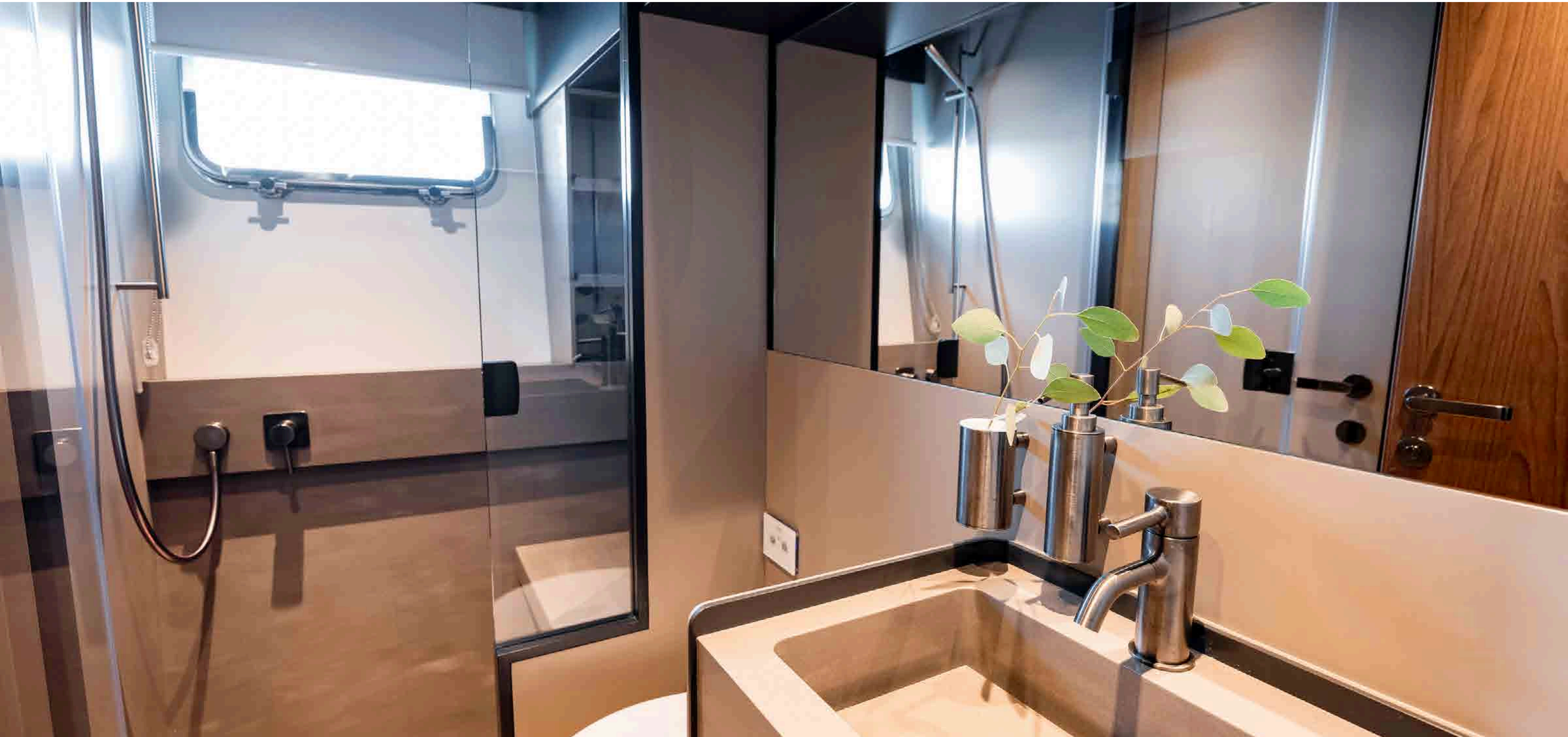
KIMANI

LOWER DECK / TWIN CABIN



KIMANI

LOWER DECK / TWIN'S ENSUITE



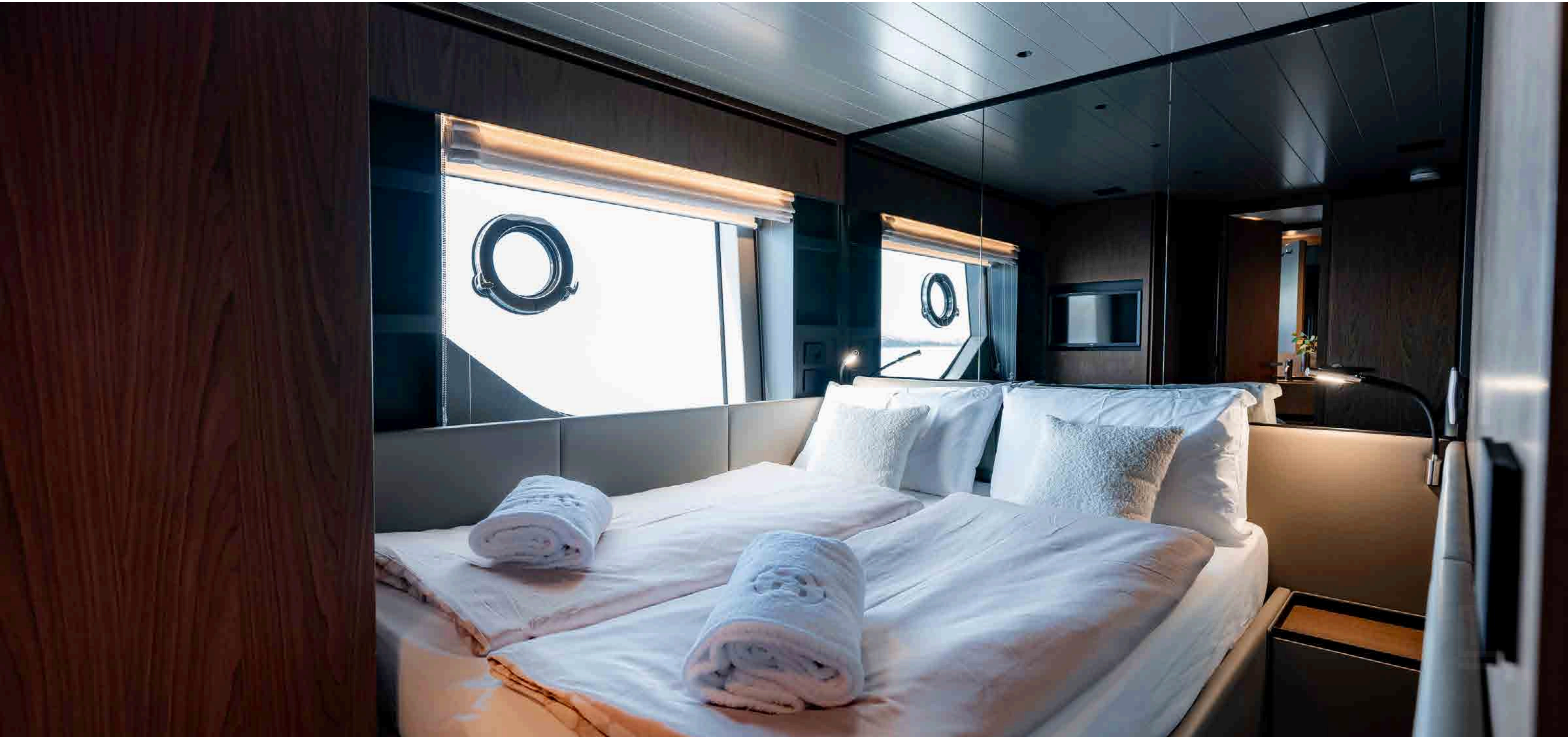
KIMANI

LOWER DECK / TWIN'S ENSUITE



KIMANI

LOWER DECK / TWIN CABIN



KIMANI

LOWER DECK / TWIN CABIN



KIMANI

LOWER DECK / TWIN'S ENSUITE



KIMANI

LOWER DECK / TWIN'S ENSUITE



KIMANI



**SPECIFICATIONS**

# KIMANI

# SPECIFICATIONS

## CHARACTERISTICS

---

<b>Name:</b>	KIMANI
<b>Builder:</b>	Bluegame
<b>Year Built:</b>	2025
<b>Type:</b>	Motor Yacht
<b>Hull No.:</b>	16
<b>Flag:</b>	Croatia
<b>Hull Design:</b>	Louis T. Codega
<b>Naval Architect:</b>	Luca Santella
<b>Exterior Designer:</b>	Luca Santella
<b>Interior Designer:</b>	Luca Santella & Zuccon International Project
<b>Construction:</b>	GRP
<b>Displacement ½ load:</b>	46
<b>Displacement:</b>	49

## DIMENSIONS

---

<b>Length Overall:</b>	22.82 m (74'10")
<b>Length Waterline:</b>	21.15 m (69'5")
<b>Beam:</b>	5.60 m (18'4")
<b>Max Draft:</b>	1.60 m (5'32")





## SPEED & RANGE UNDER POWER

---

<b>Maximum Speed:</b>	30 Knots
<b>Cruising Speed:</b>	26 Knots
<b>Range:</b>	400 nm

## CAPACITIES

---

<b>Accommodation:</b>	6 guests in 3 cabins
<b>Crew:</b>	1 crew in 1 cabin
<b>Fuel:</b>	4000 litres / 1056 US gallons
<b>Fresh water:</b>	1000 litres / 264 US gallons
<b>Black water:</b>	330 litres / 87 US gallons

## ACCOMMODATION

---

<b>Owner:</b>	1 x Master cabin
<b>Guest:</b>	2 x Twin cabins (Starboard twin with sliding beds)
<b>Crew:</b>	1 x Crew cabin

# KIMANI

# SPECIFICATIONS

## MECHANICAL EQUIPMENT

---

<b>Engines:</b>	2 x Volvo Penta IPS 1350 D13
<b>Power output:</b>	2 x 1,000 hp / 735 kW each
<b>Engine hours:</b>	209 hours as of April 2026
<b>Generators:</b>	1 x 20.5 KW Kohler
<b>Generator hours:</b>	250 hours as of April 2026
<b>Gearbox:</b>	IPS Pod Drive
<b>Rudder angle y:</b>	Rudder angle indicator
<b>Steering system:</b>	Seakeeper 18
<b>Thruster:</b>	Bow thruster (210kgf)
<b>Shore power:</b>	Shore power connection (230 V, 63 Ah, 15 m cable)
<b>Water maker:</b>	180 litres / hours (47 US gallons)





## NAVIGATION EQUIPMENT

<b>Chart plotter:</b>	3 × Volvo Glass Cockpit 16" multifunction displays
<b>AIS:</b>	Garmin AIS transceiver (Rx/Tx)
<b>EVC:</b>	Electronic engine control
<b>DPS:</b>	Dynamic positioning system (Volvo Penta)
<b>IPS controller:</b>	Dual joystick control
<b>Rudder:</b>	Rudder angle indicator
<b>Spotlights:</b>	Directional spotlight with remote control
<b>Trim tabs:</b>	Auto trim tabs

## COMMUNICATION EQUIPMENT

<b>VHF:</b>	Garmin DSC VHF radio
-------------	----------------------

## DECK EQUIPMENT

<b>Anchor windlasses:</b>	Electric windlass (2,300 W)
<b>Anchors:</b>	50 kg stainless steel Bruce-type
<b>Anchor chains:</b>	100 m galvanized chain (12mm)
<b>Boat crane &amp; davits:</b>	Hydraulic crane (starboard, 500 kg lifting capacity)
<b>Foredeck:</b>	Hard top with electrical blades
<b>Mooring Winches:</b>	2 x stern winches (1,700 W) 1 x bow winch (1,700 W)
<b>Cleats:</b>	2 x folding cleats 4 x fixed cleats with fairleads



## INTERIOR LAYOUT & FEATURES

<b>Main Deck:</b>	Lower deck salon with transformable dining table (up/down system, up to 8 guests) Up/down TV system in lower deck salon
<b>Interior Furnishings:</b>	Lower Deck Salon L-shaped Flexform Groundpiece sofa (Edison 914) Time & Style Lotus Moon oak coffee table Medium grey carpet (Coren Pantheon Ice) 2 × Living Divani Nina stools Fabric bench (Glamour Delirium 02) Decorative cushions (Rubelli & Zimmer + Rohde fabrics) Owner & Guest Cabins Bedspreads (Zimmer + Rohde Focus 904) Decorative cushions (Zimmer + Rohde Nelson series) Custom moquette carpeting (orange-beige tone)

## ENTERTAINMENT EQUIPMENT

<b>General:</b>	Exterior audio system with 6 speakers and subwoofer TV lift systems (upper cockpit & lower deck salon)
-----------------	---



## GALLEY & LAUNDRY EQUIPMENT

---

<b>Galley:</b>	Electric hot plate (Teppanyaki in wet bar) Wine cooler
----------------	---

## SECURITY & SAFETY EQUIPMENT

---

<b>Safety:</b>	Courtesy lighting throughout exterior areas
<b>Security:</b>	3 cameras (2 × engine room, 1 × cockpit) Horn
<b>Fire fighting:</b>	Fire extinguishing system

## TENDERS & WATER-SPORTS EQUIPMENT

---

<b>Tenders:</b>	Agilis 305 Jet tender
<b>Toys:</b>	Sea-Doo RXP-X RS 325

KIMANI

**Disclaimer** This document is not contractual. All specifications are given in good faith and offered for informational purposes only. The publisher and company do not warrant or assume any legal liability or responsibility for the accuracy, completeness, or usefulness of any information and/or images displayed. Yacht inventory, specifications and prices are subject to change without prior notice. None of the text and/or images used in this brochure may be reproduced without written consent from the publisher.