

LARGEYACHT.CO



ICE BEAR

FOR SALE

FEADSHIP | 52 M (171 FT) | 1988

ICE BEAR

INTRODUCTION

Feadship Platform. Multiple Futures.

ICE BEAR is offered for sale as a unique Feadship platform with multiple clearly defined redevelopment pathways.

Combining pedigree Dutch construction with completed feasibility, design, and engineering studies, the vessel presents a rare opportunity to create a highly customized yacht without the uncertainty associated with new build projects.

ASKING PRICE
€4,950,000 (EX VAT)

OFFERED ON AN "AS IS, WHERE IS" BASIS.
SHE IS CURRENTLY LOCATED IN THE NETHERLANDS.

Disclaimer:
Not for sale to U.S. residents in U.S. waters.





ICE BEAR. Defining the opportunity.

A proven platform. A defined future. A choice of outcomes.

ICE BEAR offers a structured approach to yacht redevelopment, allowing a new owner to select the most suitable pathway while benefiting from prior technical and design development.

With reduced development timelines, lower risk compared to a new build, immediate project readiness, and full flexibility in the final configuration, ICE BEAR represents a rare and compelling opportunity.



Key features

Feasible pedigree platform

Multiple redevelopment pathways

Completed feasibility and concept development

Reduced technical and design risk

Immediate project readiness

Flexible use: private, support, or hybrid

Strong value positioning vs new build



ICE BEAR

THREE CLEAR PATHWAYS

Buyers can immediately pursue one of three distinct directions, each supported by developed concepts and technical planning, allowing full flexibility depending on operational, lifestyle, or investment objectives.

Depending on the selected pathway, the vessel can be transformed and delivered within an estimated 12-month timeframe from project commencement. A significantly faster route compared to traditional new-build programs.

REFIT "AS IS" FOR STANDALONE EXPEDITION OR OFFSHORE FISHERMAN SUPERYACHT

A focused refit program retaining the existing platform while upgrading systems, accommodations, and operational capability.

This pathway delivers a highly capable, robust vessel suited for long-range cruising, expedition use, or offshore sportfishing operations.

Key Advantages:

- Shortest timeline to operation
- Controlled investment level
- Proven platform reliability
- Strong utility-driven configuration

SUPPORT YACHT CONVERSION WITH EXTENSION

A transformation into a modern yacht support vessel through a stern extension and reconfiguration of deck and storage spaces.

Designed to complement a primary yacht, this concept enables the carriage of tenders, toys, helicopters, and expedition equipment, while maintaining strong autonomy and operational flexibility.

Key Advantages:

- Expands capability of a primary yacht program
- High functional value and charter potential
- Optimized deck and storage solutions
- Modernized side and exterior profile

FULL REBUILD WITH EXTENSION

A comprehensive rebuild program including stern extension, full technical renewal, and complete redesign of exterior and interior spaces.

This pathway delivers a contemporary superyacht with significantly enhanced volume, modern aesthetics, and upgraded performance, built on a proven pedigree platform.

Key Advantages:

- Near-new yacht outcome on proven hull
- Increased volume and usability
- Contemporary design language
- Accelerated delivery compared to new build

ICE BEAR

"As she was"

A classic Feadship platform, built to the highest Dutch standards and designed for reliability, seaworthiness, and long-range capability.

A foundation of engineering integrity, forming the basis for her next evolution.



ICE BEAR

"AS SHE WAS"



ICE BEAR

As she sits today, in The Netherlands

The vessel presents a clear and honest platform, ready for immediate commencement of refit or conversion works.

All redevelopment pathways can be initiated without delay following acquisition.



ICE BEAR

AS SHE IS TODAY



ICE BEAR

AS SHE IS TODAY



ICE BEAR

AS SHE IS TODAY



ICE BEAR

AS SHE IS TODAY



ICE BEAR

AS SHE IS TODAY



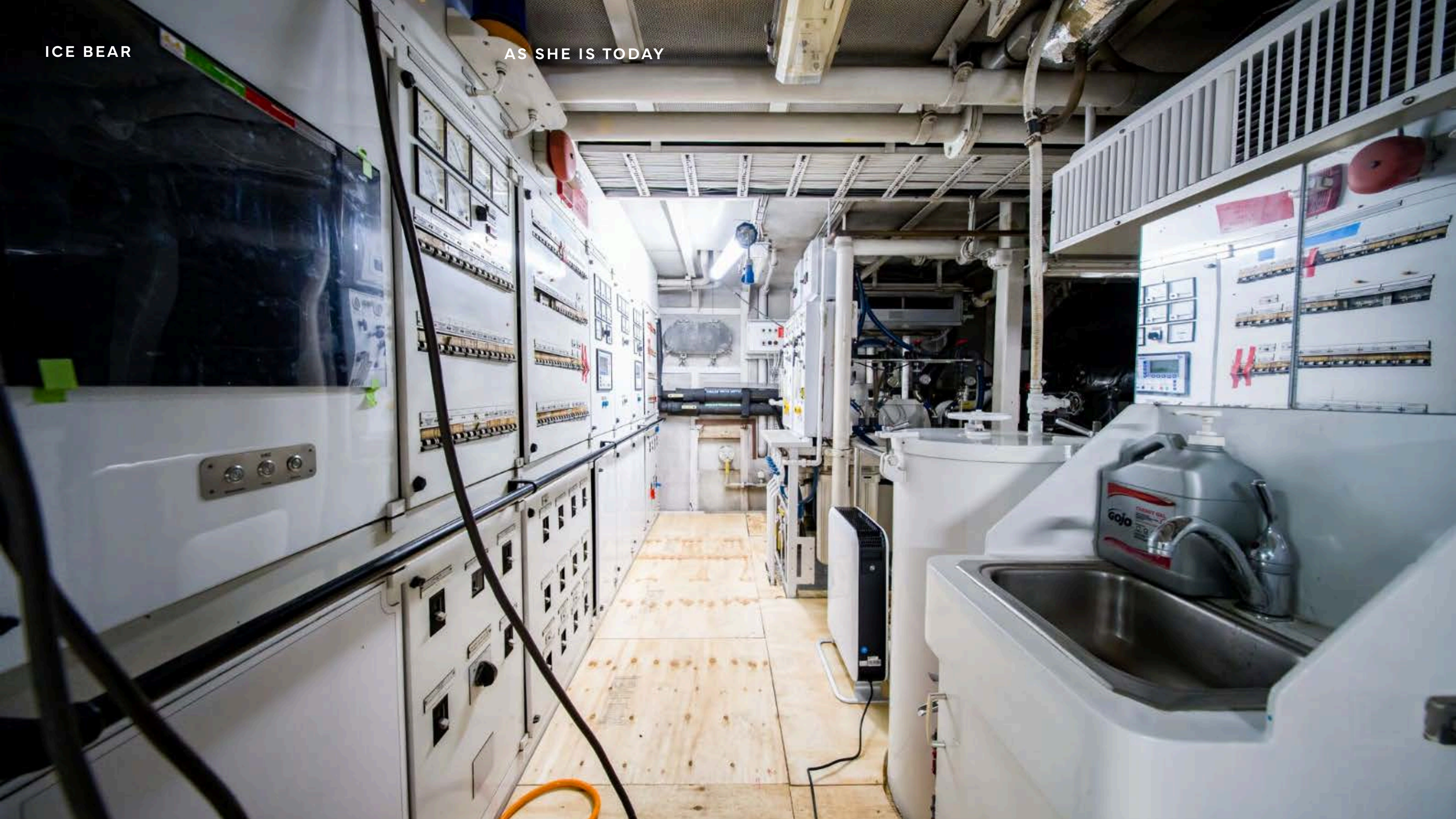
ICE BEAR

AS SHE IS TODAY



ICE BEAR

AS SHE IS TODAY



ICE BEAR

AS SHE IS TODAY



ICE BEAR

AS SHE IS TODAY



ICE BEAR

AS SHE IS TODAY



Yacht concepts

Developed design concepts illustrate the potential transformation of ICE BEAR across multiple configurations.

From a capable expedition vessel to a high-function support yacht or a fully rebuilt luxury superyacht, each pathway has been carefully studied to maximize the platform's potential.



ICE BEAR

SUPPORT YACHT CONCEPT



ICE BEAR

SUPPORT YACHT CONCEPT



ICE BEAR

SUPPORT YACHT CONCEPT



ICE BEAR

SUPPORT YACHT CONCEPT



ICE BEAR

SUPPORT YACHT CONCEPT



ICE BEAR

LUXURY SUPERYACHT CONVERSION



ICE BEAR

LUXURY SUPERYACHT CONVERSION



ICE BEAR

LUXURY SUPERYACHT CONVERSION



ICE BEAR

LUXURY SUPERYACHT CONVERSION



ICE BEAR

LUXURY SUPERYACHT CONVERSION



ICE BEAR

SPECIFICATIONS



ICE BEAR

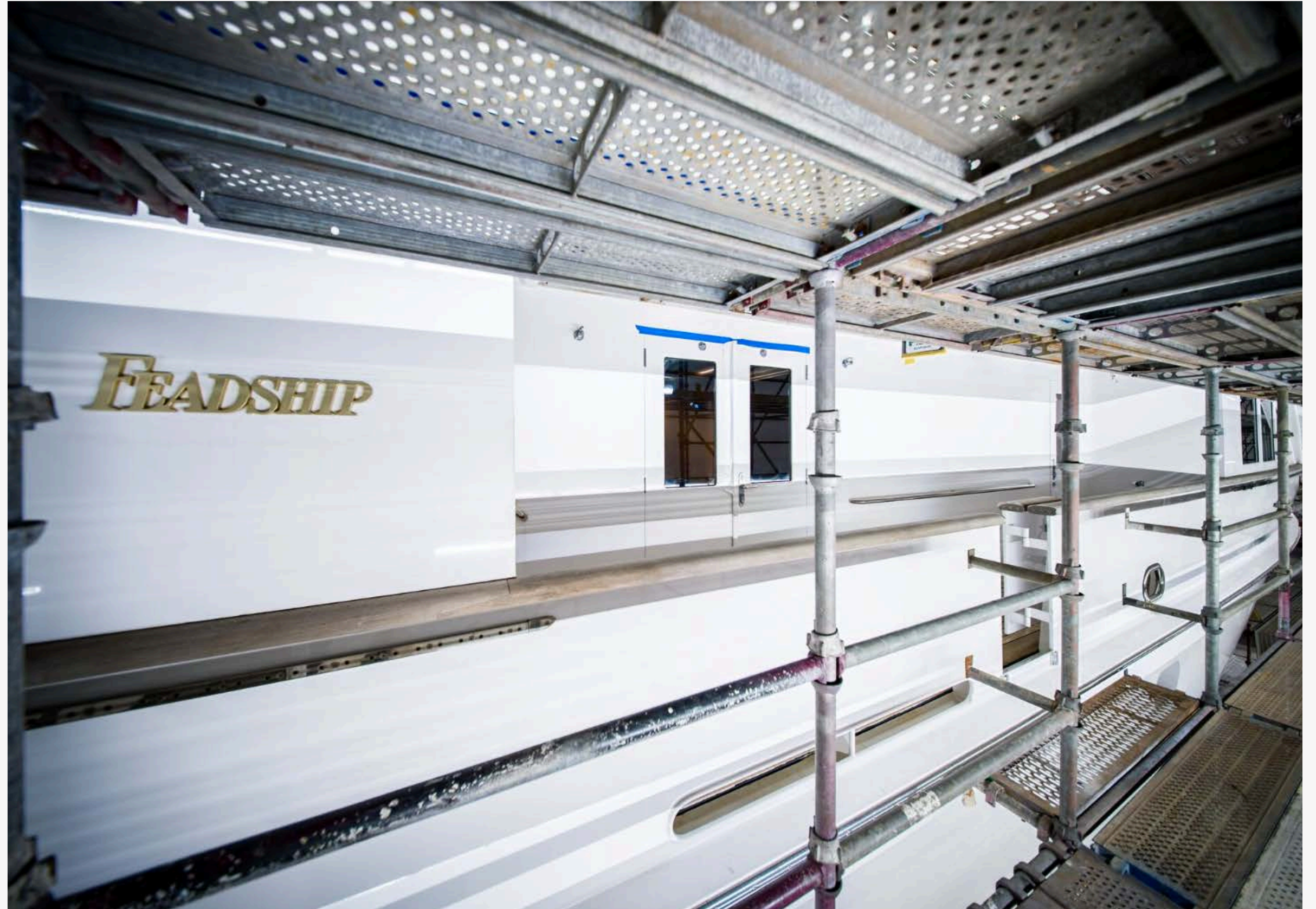
SPECIFICATIONS

CHARACTERISTICS

Name:	ICE BEAR
Builder:	Feadship, De Vries
Year Built:	1988
Type:	Twin Screw Diesel Yacht
Hull No.:	732372
IMO:	8981353
Classification:	ABS
Flag:	Cayman Islands
Exterior Designer:	De Voogt
Interior Designer:	Paola D. Smith
Construction:	Steel hull, aluminium superstructure
Helipad:	Yes, non-certified (more information on request)

DIMENSIONS

Length Overall:	52.00 (171')
Beam:	9.30 (30'5")
Draft:	3.10 (10'1")
Gross Tonnage:	614





SPEED & RANGE UNDER POWER

Maximum Speed:	15 Knots
Cruising Speed:	13 Knots
Range:	4,850NM

CAPACITIES

Accommodation:	10 guests in 5 cabins
Crew:	Up to 11 Crew in 6 cabins
Fuel:	76,866 litres / 20,306 US gallons
Fresh water:	20,668 litres / 5,460 US gallons
Lube oil:	844 litres / 223 US gallons
Dirty oil:	1,847 litres / 488 US gallons
Grey water:	4,004 litres / 1,058 US gallons
Black water:	1,362 litres / 360 US gallons

ACCOMMODATION

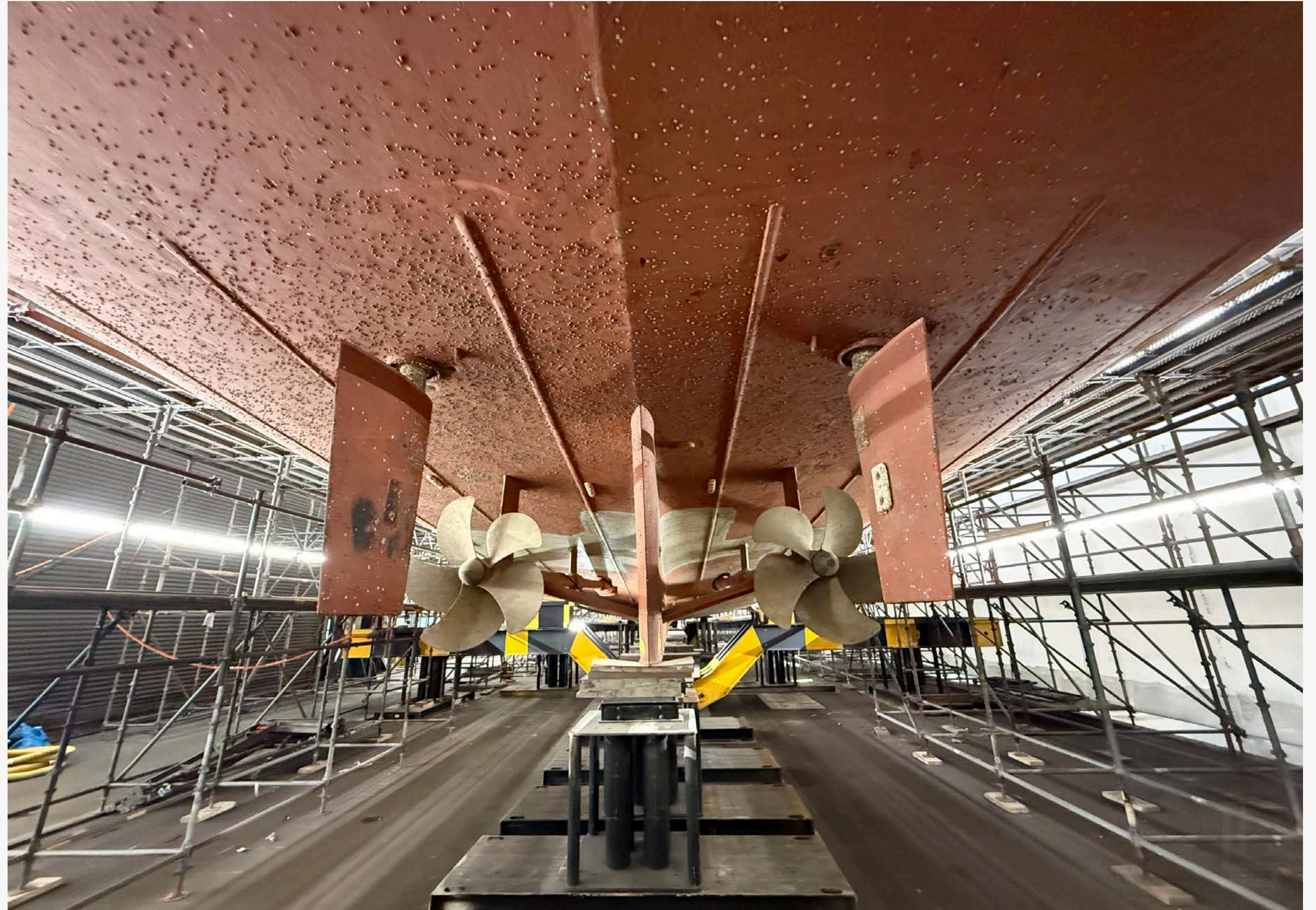
Owner:	1 x Master cabin
Guest:	2 x Double cabins 2 x Twin cabins
Crew:	6 x Crew cabins

ICE BEAR

SPECIFICATIONS

MECHANICAL EQUIPMENT

Engines:	2 x 1,172hp Caterpillar 3512TA
Generators:	Northern Lights 145kw (new in 2006)
Gearbox:	Reintjes
Steering system:	Anschutz-raytheon
Stabilisers:	Vosper, NAIAD
Bow thruster:	Daneau
Electricity:	208 3ph 60hz
Shore power:	ISMET isolation transfer
Air conditioning:	Aqua air
Water maker:	Village Marine 15,141 litres / day (4,000 US gallons / day)
Toilet system:	Microphor
Sewage system:	Headhunter
Fuel separator:	Alpha laval MAB – 104B





NAVIGATION EQUIPMENT

Magnetic compass:	Observer MK 80/07 Pilot MK3
Gyro compass:	Furuno
Automatic pilot:	Anschutz-raytheon
Echo sounder:	Furuno FCV 295
Radar:	Furuno RCU-041 X-band Furuno RCU-041 -Sband
AIS:	Class A
GPS:	2 x Furuno Navigator GP-150
Chart plotter:	Transas
LOG:	Furuno DS-80
Wind & weather:	Young 26700 series translator

COMMUNICATION EQUIPMENT

Satcom:	Sailor H2095c, KVH VOIP satphone service
VHF:	Sailor model 6222
SSB:	Sailor model 6301
Telephone exchange:	KVH satphone service
UHF:	Rugged radios
Aircraft emergency comms:	VHF



DECK EQUIPMENT

Anchor windlass:	Steen
Aft warping capstans:	Steen
Boat crane & davits:	Akerboom (aft) Technoship hydrodine (forward)
Swimming platform:	2 x custom fish boxes

ENTERTAINMENT EQUIPMENT

General:	Direct TV Apple TV Plex DVD players Marantz AV surround receiver throughout Apple mac desktop HP printer
-----------------	--

TENDERS & WATER-SPORTS EQUIPMENT

Tenders:	28ft Shamrock Sportfisher 18ft RIB
-----------------	---------------------------------------



GALLEY & LAUNDRY EQUIPMENT

Galley:	Vulcan, stovetop, ovens, refrigerators
Pantry:	LG fridge, freezer GE microwave Kitchen Aid dishwasher Wine fridge Coffee machine
Crew mess:	Subzero fridge Drinks fridge Hoshizaki ice maker Glenco XL series freezer Kitchen Aid dishwasher
Main deck Aft:	Hoshizaki ice maker
Laundry:	2 x Miele washer, dryer stackable

SECURITY & SAFETY EQUIPMENT

Safety:	Smoke hoods Immersion suits, PFDs First aid kit, AED, Tempus unit, Medical O2 kit Medaire support kits, back board Fire panel in chartroom, smoke and heat detectors throughout
Security:	CCTV
Fire fighting:	Halon fixed fire fighting system Fire extinguishers Bunker kits Fresh water hoses Fire blankets

ICE BEAR



ICE BEAR



Disclaimer
This document is not contractual. All specifications are given in good faith and offered for informational purposes only. The publisher and company do not warrant or assume any legal liability or responsibility for the accuracy, completeness, or usefulness of any information and/or images displayed. Yacht inventory, specifications and prices are subject to change without prior notice. None of the text and/or images used in this brochure may be reproduced without written consent from the publisher.

LARGEYACHT.CO

**FOR INQUIRIES &
MORE INFORMATION CONTACT**

VESA KAUKONEN

Founder & CEO

M: +33 643 915 414 | **E:** vk@largeyacht.co

O: 25 Boulevard Albert 1er, 98000 Monaco

www.largeyacht.co

