

# LARGEYACHT.CO



# OKKO

**FOR SALE**

MONDOMARINE | 41,10 M (134.8 FT) | 2013/2022-2025

OKKO

INTRODUCTION

Italian craftsmanship with timeless elegance.

Built by Mondomarine and designed by Giorgio Vafiadis, this 41-metre semi-displacement yacht combines a high-volume interior with contemporary styling.

Her immaculate condition, impressive cruising capabilities, and luxurious amenities make her an exceptional opportunity for discerning buyers.

OKKO has been maintained to the highest standards, with low fuel consumption, zero-speed stabilizers, and a proven operational record. Designed for relaxed Mediterranean cruising, she offers a seamless blend of performance, comfort, and sophisticated outdoor living.

---

**ASKING PRICE**

**€ 10,400,000 (EX VAT)**





## Lifestyle onboard OKKO.

Designed for open-air living, OKKO's decks offer multiple zones for entertaining and relaxing.

The sundeck is the social heart of the yacht, featuring a jacuzzi with panoramic views, a bar and grill, and a generous sun lounge.

On the main deck aft, a dining area flows seamlessly into a spacious salon, where large windows flood the interior with natural light.

The interior showcases refined finishes, contemporary décor, and a warm, welcoming ambiance. The Owner's stateroom is located forward on the main deck, while two VIP and two twin staterooms on the lower deck provide generous accommodation for guests.



OKKO



# Key features

Five staterooms

---

High volume

---

Extremely fuel efficient

---

Great charter potential

---

Expansive sundeck

---

Outdoor gym

---

Zero-Speed stabilisers

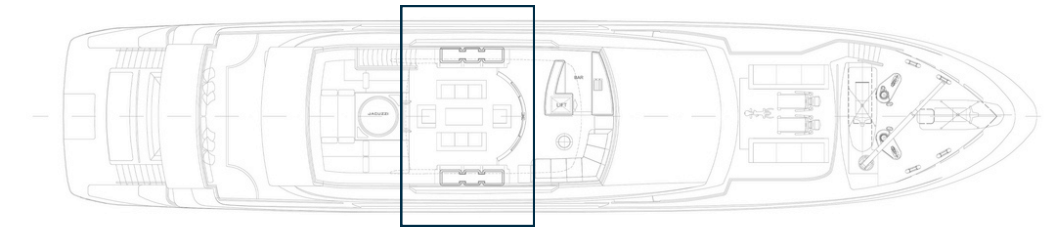


OKKO



OKKO

SUN DECK



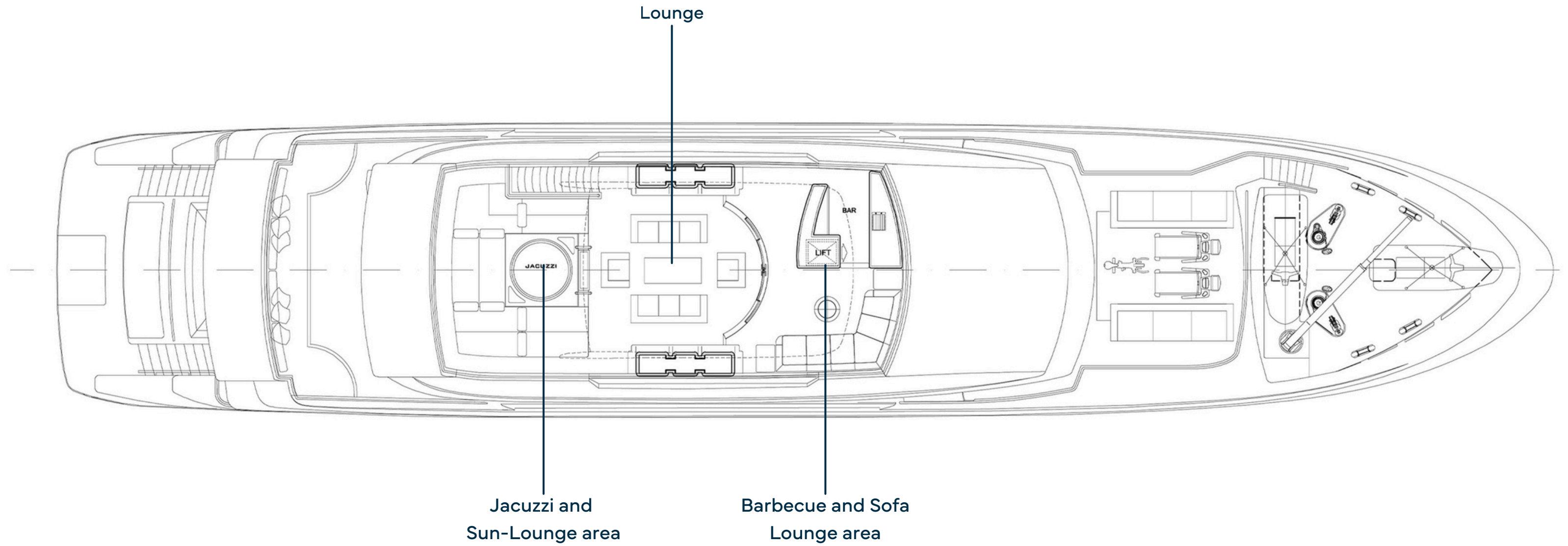
## Sun deck

The sundeck is the ultimate social hub onboard OKKO. Designed for outdoor living, it features an elevated jacuzzi with panoramic views, a barbecue and bar area, generous sun pads and lounge seating.

This flexible space offers the perfect setting for both relaxed afternoons and glamorous entertaining.

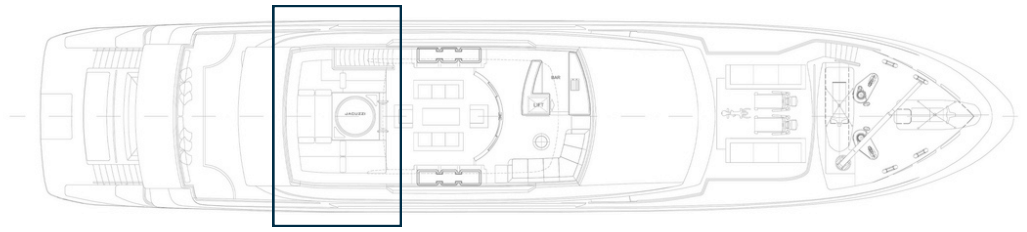


# General arrangement



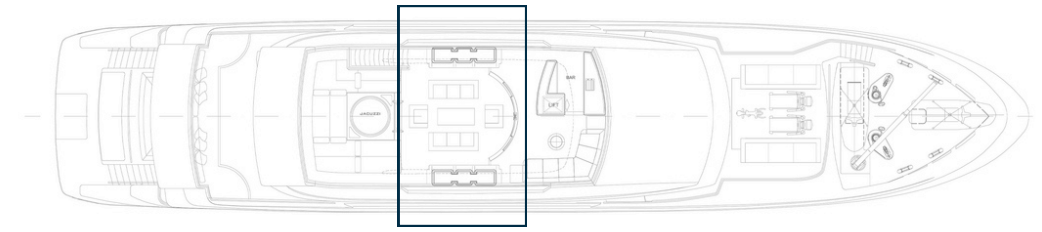
OKKO

SUN DECK / JACUZZI AND SUN-LOUNGE AREA



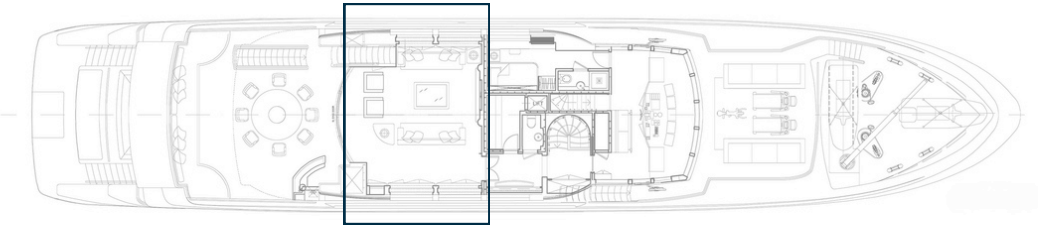
OKKO

SUN DECK / LOUNGE



OKKO

UPPER DECK



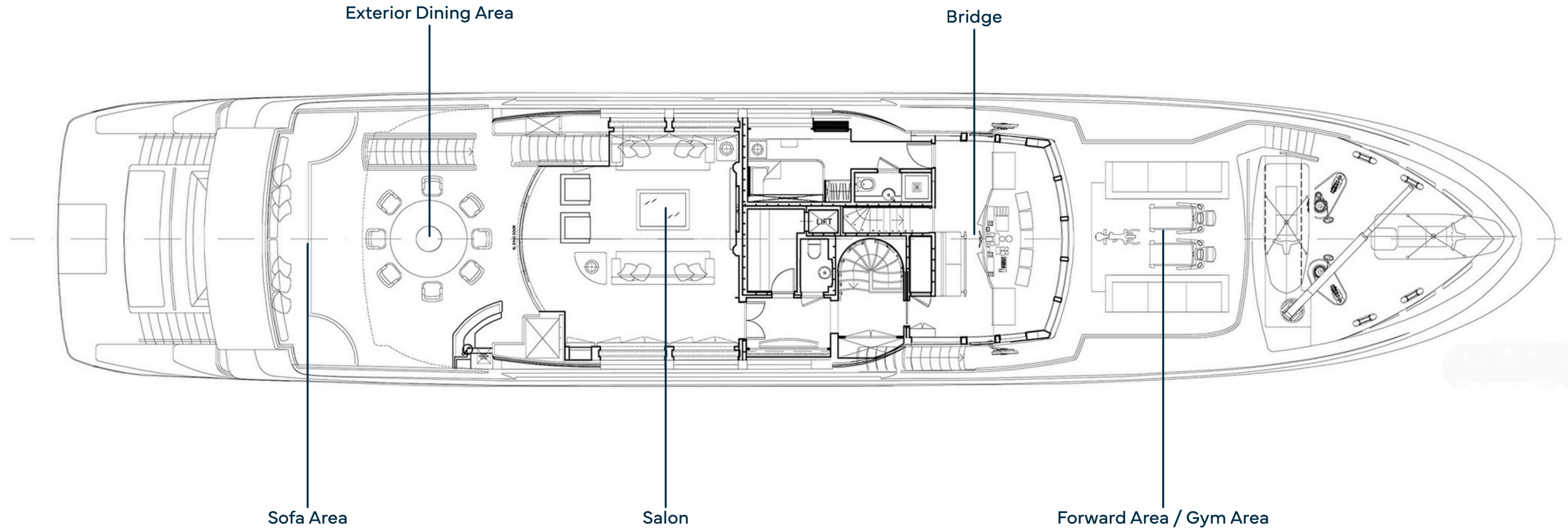
# Upper Deck

The upper deck seamlessly blends alfresco dining, comfortable lounge areas, and a bright skylounge, creating a sophisticated yet inviting atmosphere.

Wide exterior decks provide multiple lounging options, while the interior salon offers panoramic views, ideal for both private moments and hosting.

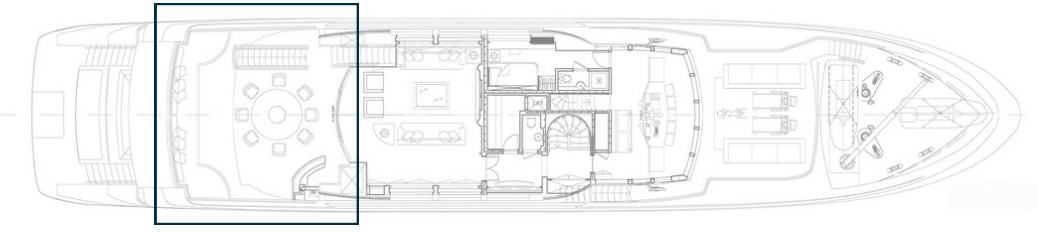


# General arrangement



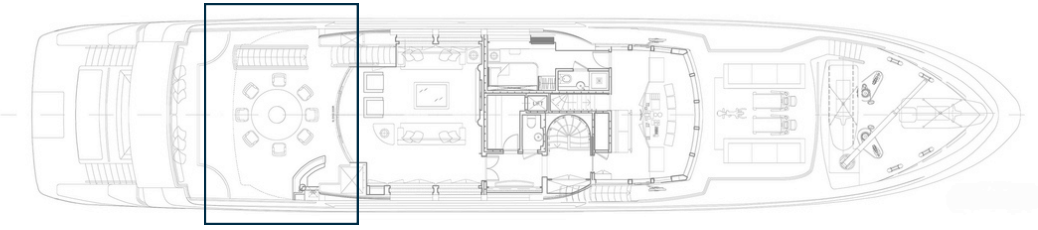
OKKO

UPPER DECK / SOFA AND EXTERIOR DINING AREA



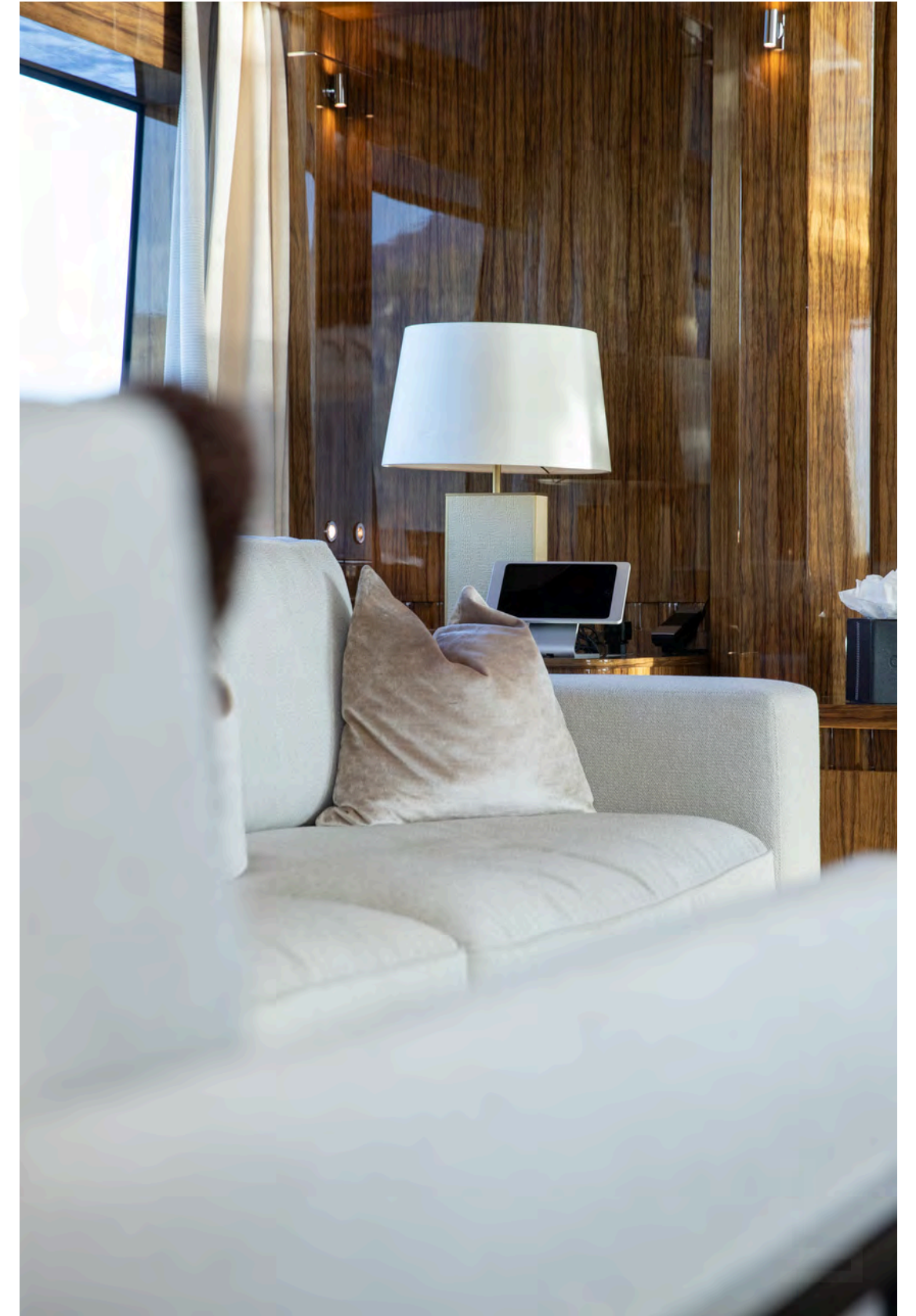
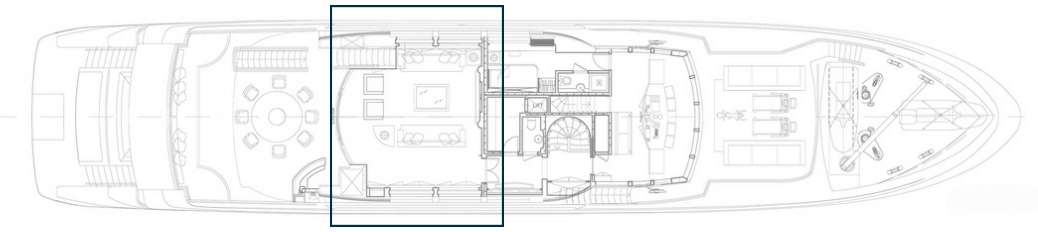
OKKO

UPPER DECK / EXTERIOR DINING AREA



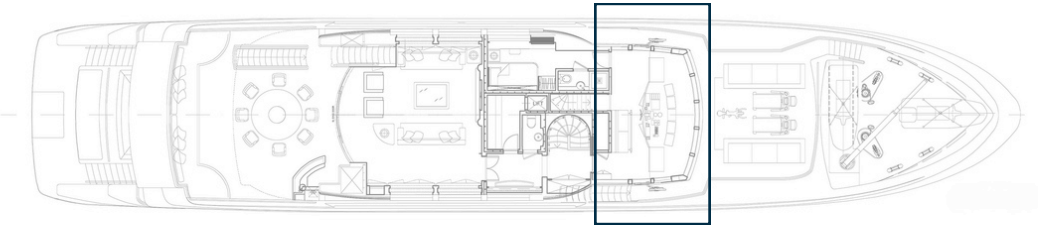
OKKO

UPPER DECK / SALON



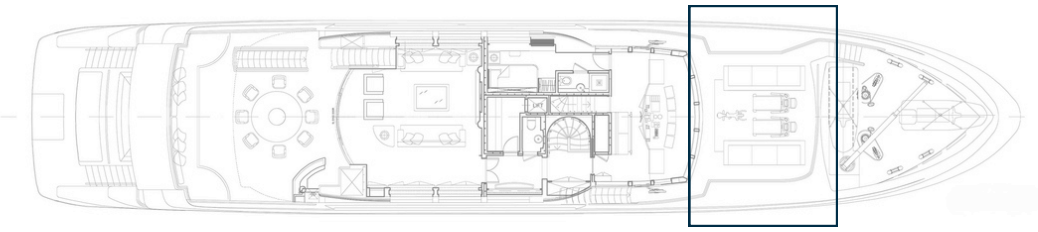
OKKO

UPPER DECK / BRIDGE



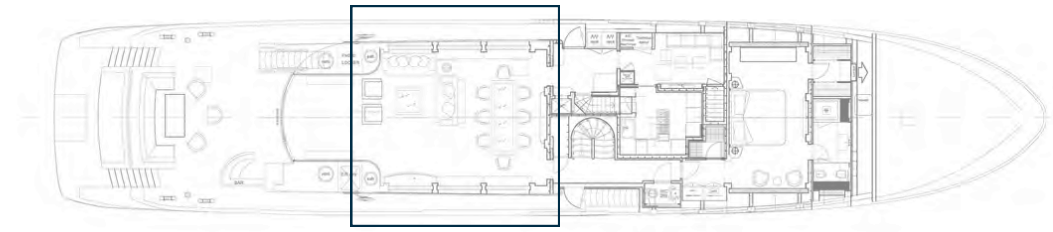
OKKO

UPPER DECK / FORWARD AREA / GYM AREA



OKKO

MAIN DECK

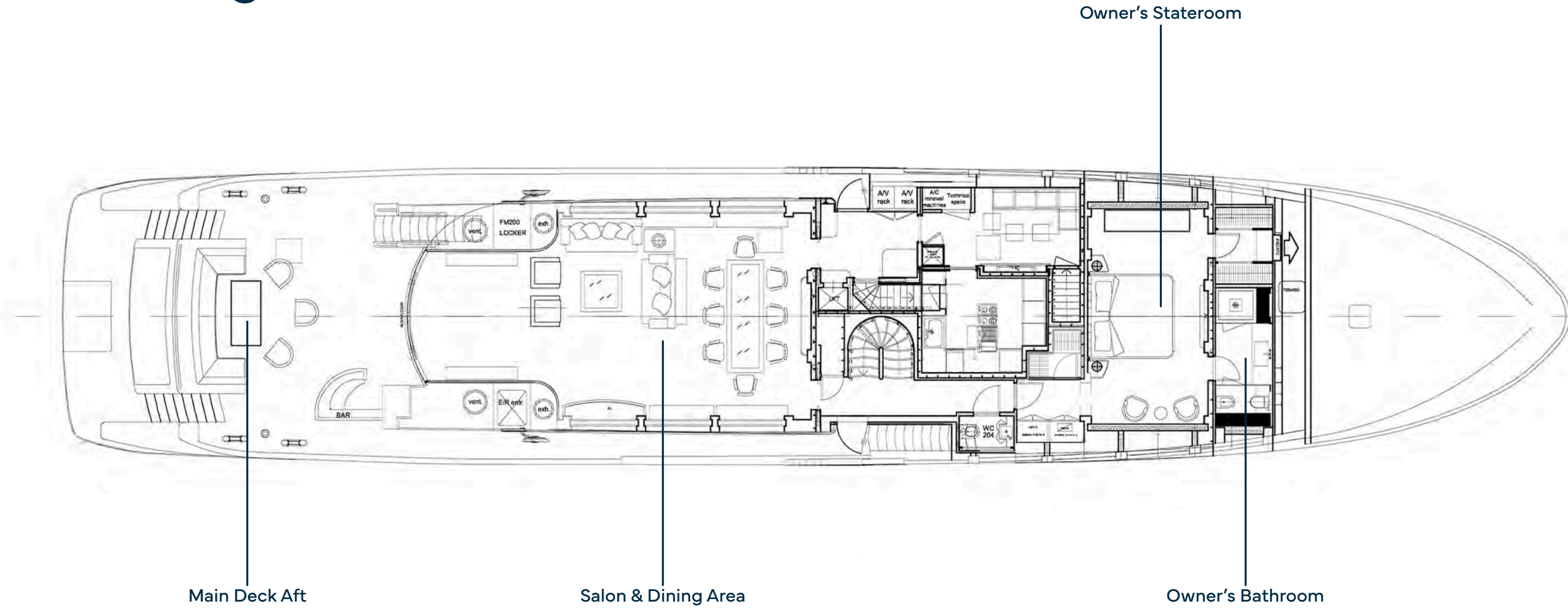


## Main Deck

The main deck welcomes guests with an elegant aft dining and lounge area, flowing through to a spacious salon and formal dining space. Large windows flood the interior with natural light, enhancing the sense of volume. Forward, the full-beam Owner's stateroom provides privacy and comfort with a luxurious en-suite bathroom and dressing area.

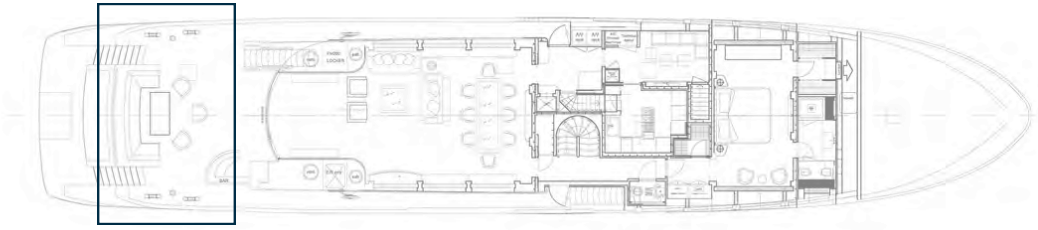


# General arrangement



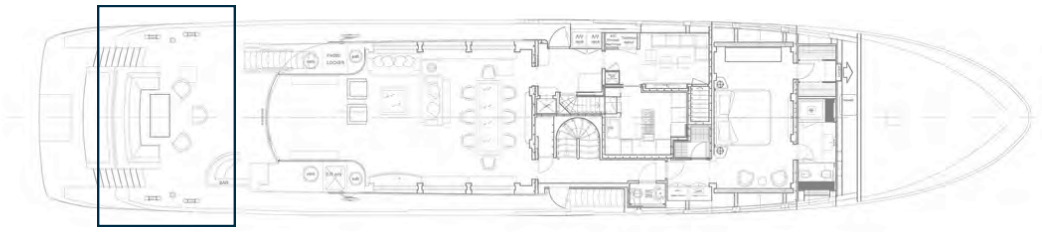
OKKO

MAIN DECK / AFT



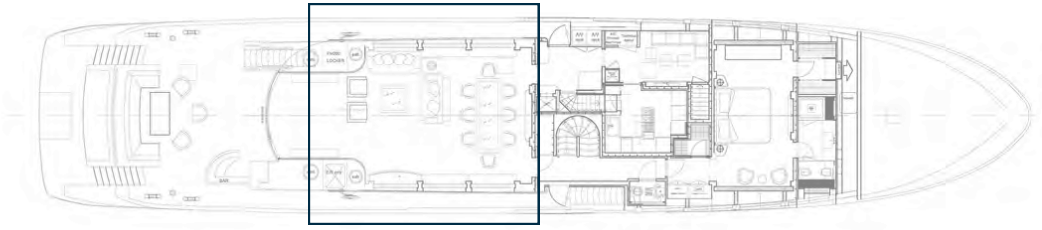
OKKO

MAIN DECK / AFT



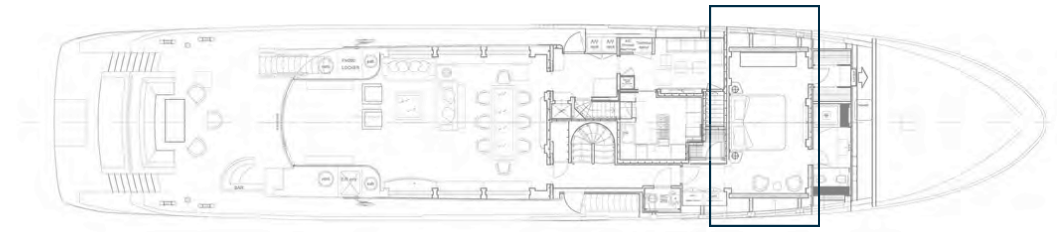
OKKO

MAIN DECK / SALON & DINING AREA



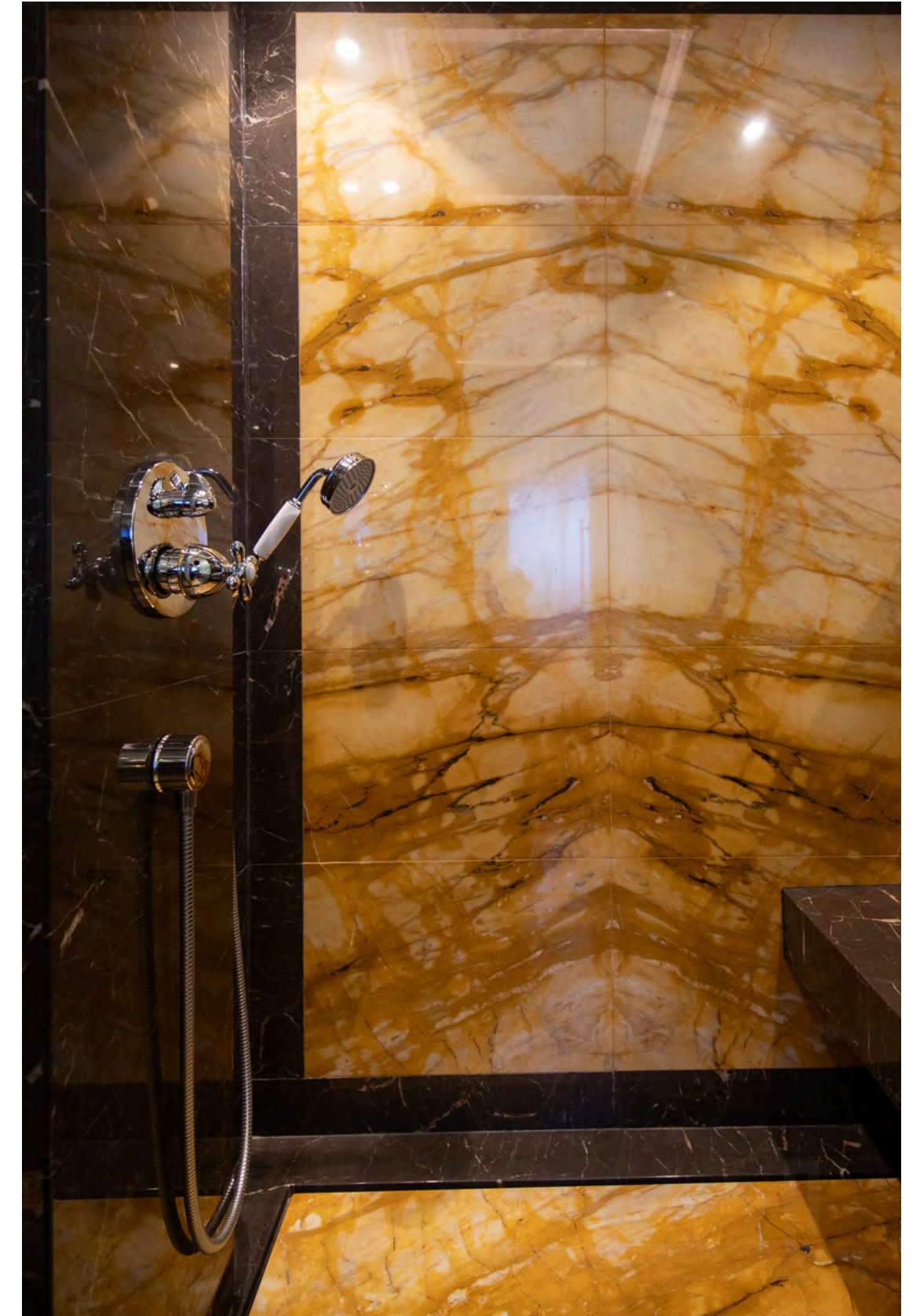
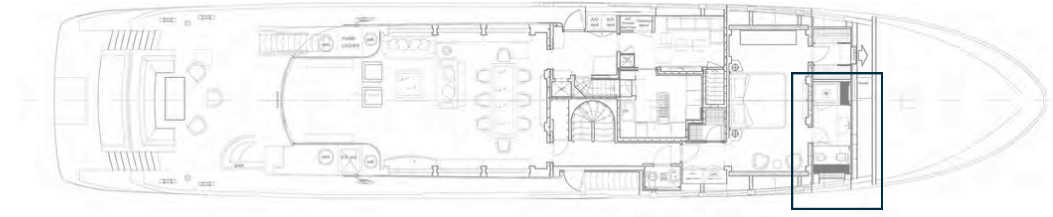
OKKO

MAIN DECK / OWNER'S STATEROOM



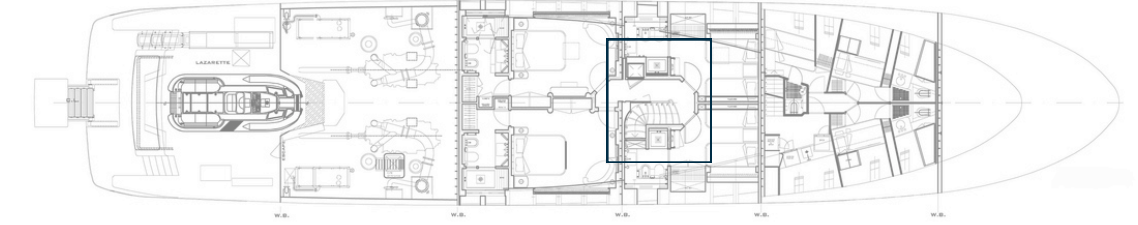
OKKO

MAIN DECK / OWNER'S BATHROOM



OKKO

LOWER DECK



## Lower Deck

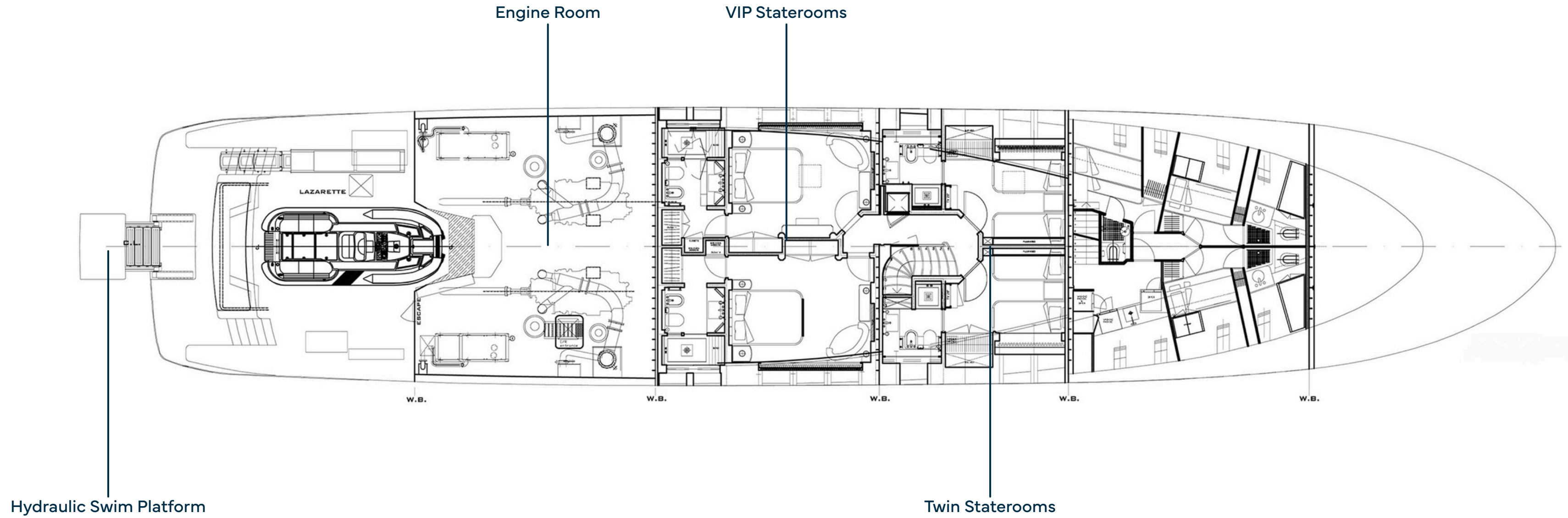
The lower deck accommodates guests in two VIP staterooms and two twin staterooms, each with en-suite bathrooms.

The layout is designed for comfort and privacy, ideal for family cruising or entertaining guests.

This deck also includes crew quarters to ensure smooth and discreet service onboard.

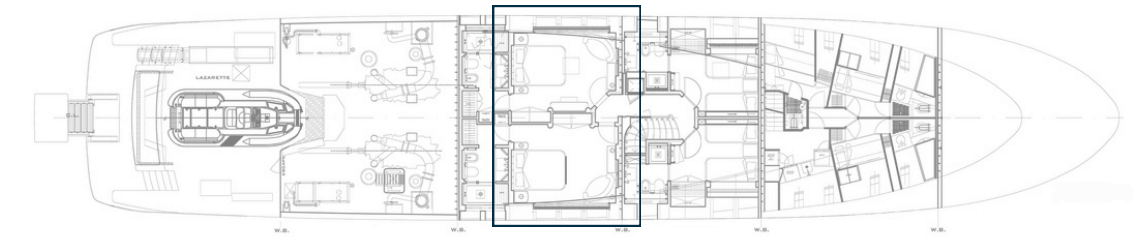


# General arrangement



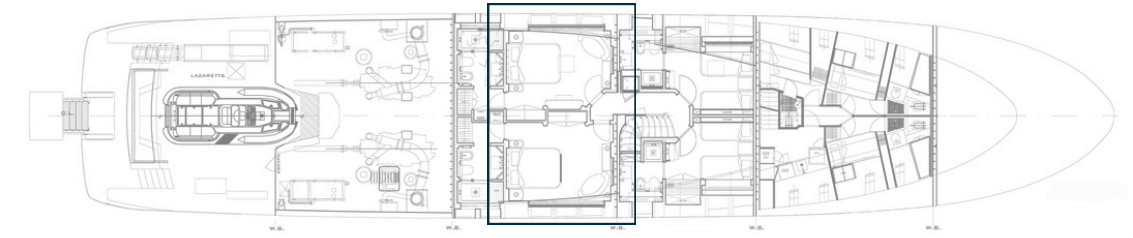
OKKO

LOWER DECK / VIP STATEROOM



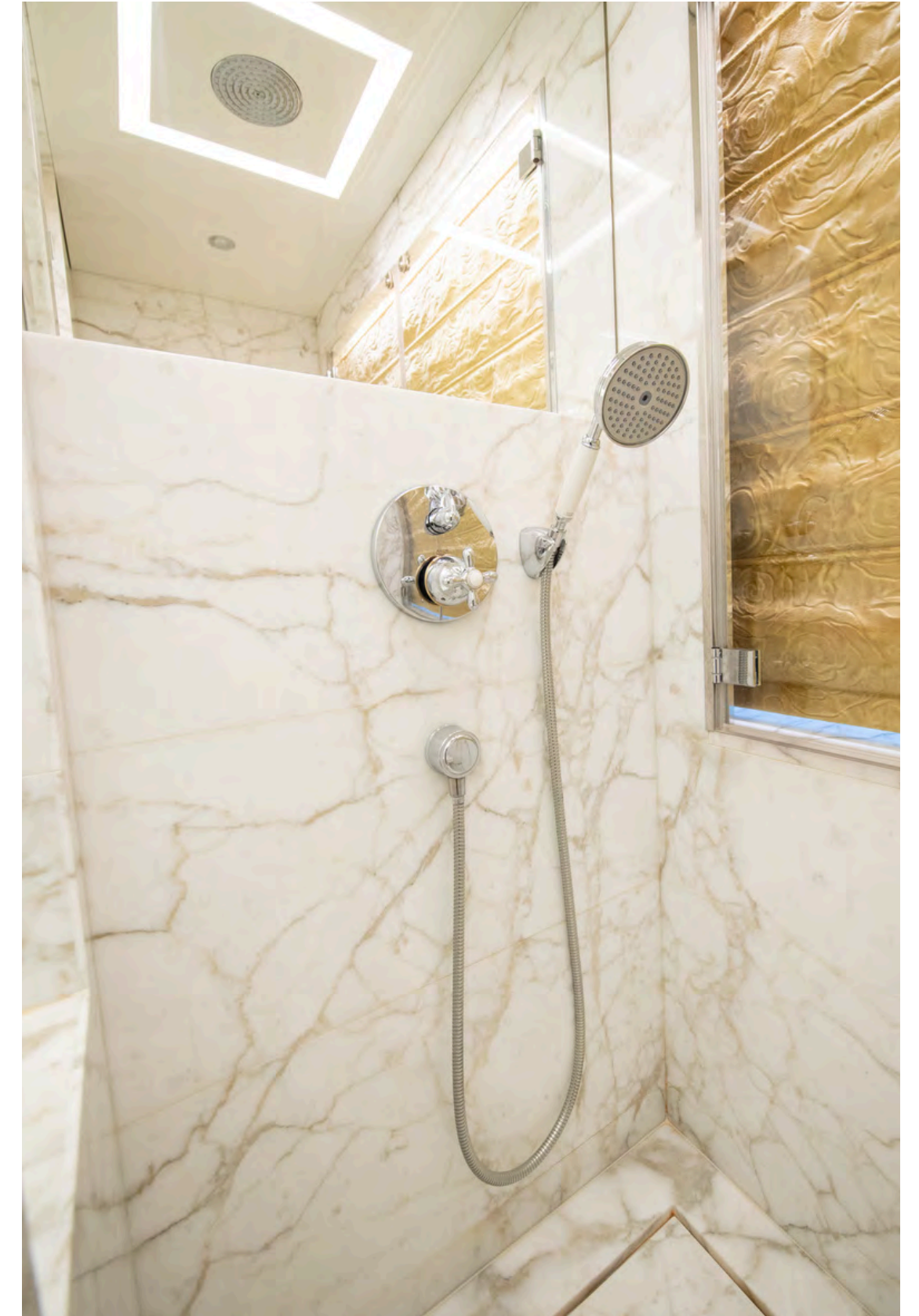
OKKO

LOWER DECK / VIP STATEROOM



OKKO

LOWER DECK / BATHROOM



OKKO

LOWER DECK / TWIN STATEROOM



OKKO

LOWER DECK / TWIN STATEROOM



OKKO

# SPECIFICATIONS



## CHARACTERISTICS

---

<b>Name:</b>	OKKO
<b>Builder:</b>	Mondomarine
<b>Year Built/Refit:</b>	2013/2022 - 2025
<b>Type:</b>	Semi-Displacement
<b>Classification:</b>	ABS, A1 Commercial Yachting Service
<b>Flag:</b>	Malta
<b>Exterior Designer:</b>	Giorgio Vafiadis
<b>Interior Designer:</b>	Giorgio Vafiadis
<b>Hull Material:</b>	Aluminium

## DIMENSIONS

---

<b>Length Overall:</b>	41,10 m (134'8")
<b>Beam:</b>	8,10 m (26' 5")
<b>Draft:</b>	2,3 m (7' 5")
<b>Gross Tonnage:</b>	366

## ACCOMMODATION

---

<b>Owner:</b>	1x Owner's Stateroom
<b>Guest:</b>	2x VIP Stateroom 2x Twin Stateroom
<b>Total:</b>	12 guests
<b>Crew:</b>	Captain + 6





## SPEED & RANGE UNDER POWER

<b>Maximum Speed:</b>	16 knots @ 600 l/hour
<b>Cruising Speed:</b>	12 knots @ 250 l/hour
<b>Range:</b>	3,000 nm @ 12 knots

## MACHINERY

<b>Main Engines:</b>	2 x MTU 12V 2000 M91 @ 2,350 rpm
<b>Engine Hours:</b>	4963 (port) as of January 2026 4935 (stbd) as of January 2026
<b>Generators:</b>	2 x Kohler 70EFOZD @ 40 l/hour
<b>Generator Hours:</b>	12873 (port) as of January 2026 12832 (stbd) as of January 2026
<b>Stabilizers:</b>	Zero Speed Naiad 525
<b>Bow Thruster:</b>	Vosper VT75
<b>Fuel Capacity:</b>	49,800 l
<b>Fresh water capacity:</b>	9,290 l



## COMMUNICATION

---

4G Pepwave with Dual External Scan Antennas  
Kerio Control system, Starlink Maritime, and TVRO-equipped  
Internal 4G signal repeater system (EU & USA)

## AUDIO VISUAL EQUIPMENT

---

Axis CCTV cameras and recording system  
Morse steward call button system with 7 custom finished buttons  
Cisco hardware; switches  
Wi-Fi Access Points  
Cat 6 internal cabling  
7 x iPad mini (5th gen, 2020)  
2 x Luxeport docking stations  
Kartina TV, Apple TV  
Sony Blu-ray, and Plex server  
Denon VR amplifiers, Crestron Digital Media  
Crestron 3 Series control system with 8 port IR  
PlayStation 5 in Main Salon  
Xbox in Upper Deck Salon  
82" TV in Upper Deck Salon  
65" TV in Main Deck Salon

## GYM EQUIPMENT

---

<b>Rowing machine:</b>	1 x TechnoGym SkillRow
<b>Treadmill:</b>	1 x TechnoGym MyRun
<b>Bike:</b>	1 x TechnoGym Ride

## TENDER & TOYS

---

<b>Tender:</b>	Castoldi Jt 17 Jet Tender
<b>Toys:</b>	Airhead Maple Inflatable Couch
	Jobe Galaxy Ringo
	Jobe Virtue 67" Water Ski
	Jobe Reublik Wakeboard Package
	Freestyle Okko Slide
	Funair Trampoline
	2 x Sea Doo Rxt 300 X (2020)
	2 x Backup Sups
	2 x Sea Bob Cayago Fs5R (2019)
	3 x Sups



OKKO



**Disclaimer**  
This document is not contractual. All specifications are given in good faith and offered for informational purposes only. The publisher and company do not warrant or assume any legal liability or responsibility for the accuracy, completeness, or usefulness of any information and/or images displayed. Yacht inventory, specifications and prices are subject to change without prior notice. None of the text and/or images used in this brochure may be reproduced without written consent from the publisher.

# LARGEYACHT.CO

**FOR INQUIRIES &  
MORE INFORMATION CONTACT**

**VESA KAUKONEN**

Founder & CEO

**M:** +33 643 915 414 | **E:** vk@largeyacht.co

**O:** 25 Boulevard Albert 1er, 98000 Monaco

**[www.largeyacht.co](http://www.largeyacht.co)**

