

# LARGEYACHT.CO



# LUNA

**FOR SALE**

OCEANCO | 90 M (295.27 FT) | 2018/2024

## LUNA

Built by Oceanco, with exterior design by Luiz de Basto Design and interiors by Nuvolari & Lenard / Valentina Zannier Interiors, the 90m yacht LUNA is now exclusively offered for sale.

Her impressive features include a complete owner's deck, with a private salon and jacuzzi, a wellness area, and an impressive beach club. LUNA can accommodate up to 14 guests in perfect harmony.

---

## ASKING PRICE

**€ 218,000,000 (EX VAT)**

Disclaimer: LUNA artwork and personal effects are not included in the sale.  
Not for sale to U.S. residents in U.S. waters.

## INTRODUCTION





## LUNA looks like no other yacht.

LUNA's layout deviates from contemporary yacht designs. Her nearly 3,000 gross tons of volume have been allocated to each feature, providing ample space.

The entire vessel exudes a seamless elegance. Glistening white balconies and walkways, along with the roofline, sheer line, transom, and bridge, create an illusion of perpetual motion, especially accentuated by the sharply angular bow.

White streaks appear suspended in time against the backdrop of the deep black hull and reflective mirror-glass superstructure, adding an extra layer of captivating allure to the scene.



LUNA



# Key features

Complete Owner's deck with a fully private salon and jacuzzi pool deck forward, isolated from cameras in total privacy

---

Two heli-decks for private use

---

Beach Club

---

Six-person elevator serving all guest decks

---

Pool with fresh water, counter current

---

Fully equipped gym with floor-to-ceiling windows

---

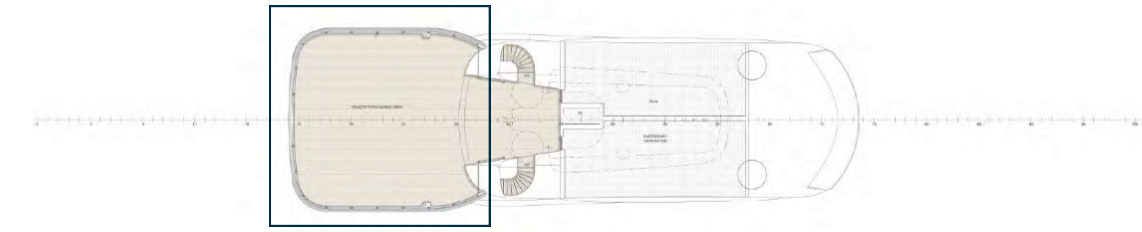
Wellness Area: Hammam, sauna, massage/ beauty salon



LUNA



LUNA



## Heli decks

The two heli decks is also a versatile outdoor lounge, perfect for relaxation and entertainment.

With stunning views, it can easily transform for gatherings, sports, or even an outdoor cinema experience, making it an ideal space for leisure under the open sky.

Certified helipad for private use.



LUNA

HELI DECKS

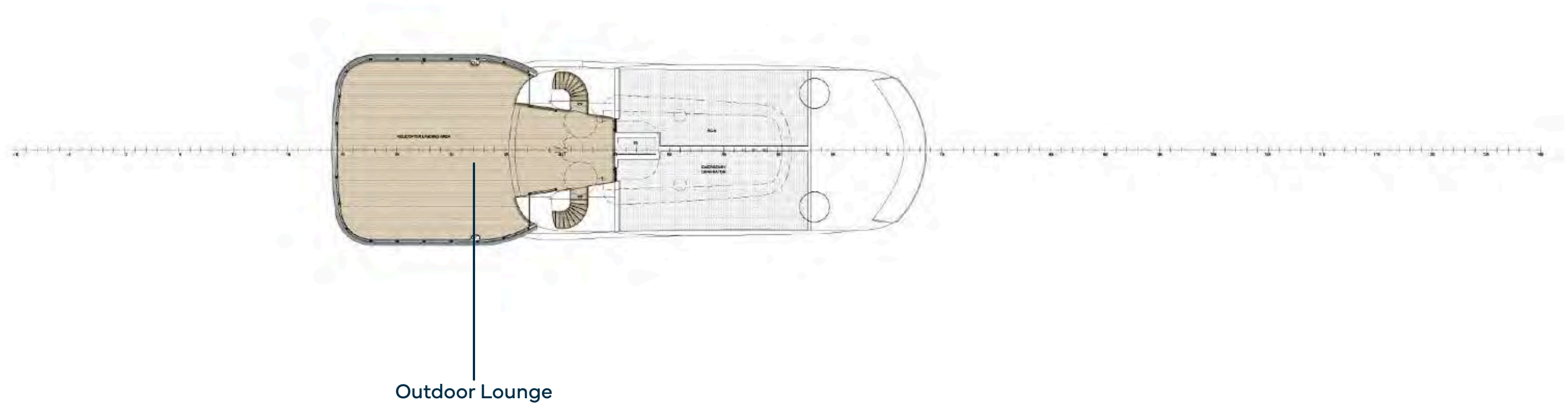


LUNA

HELI DECKS

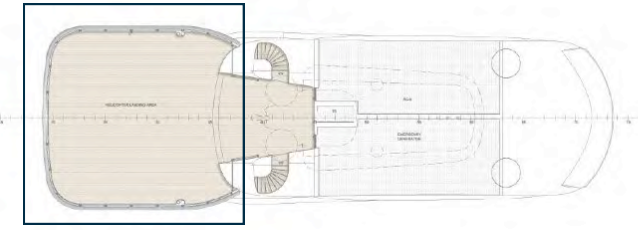


# General arrangement



LUNA

HELI DECKS



LUNA



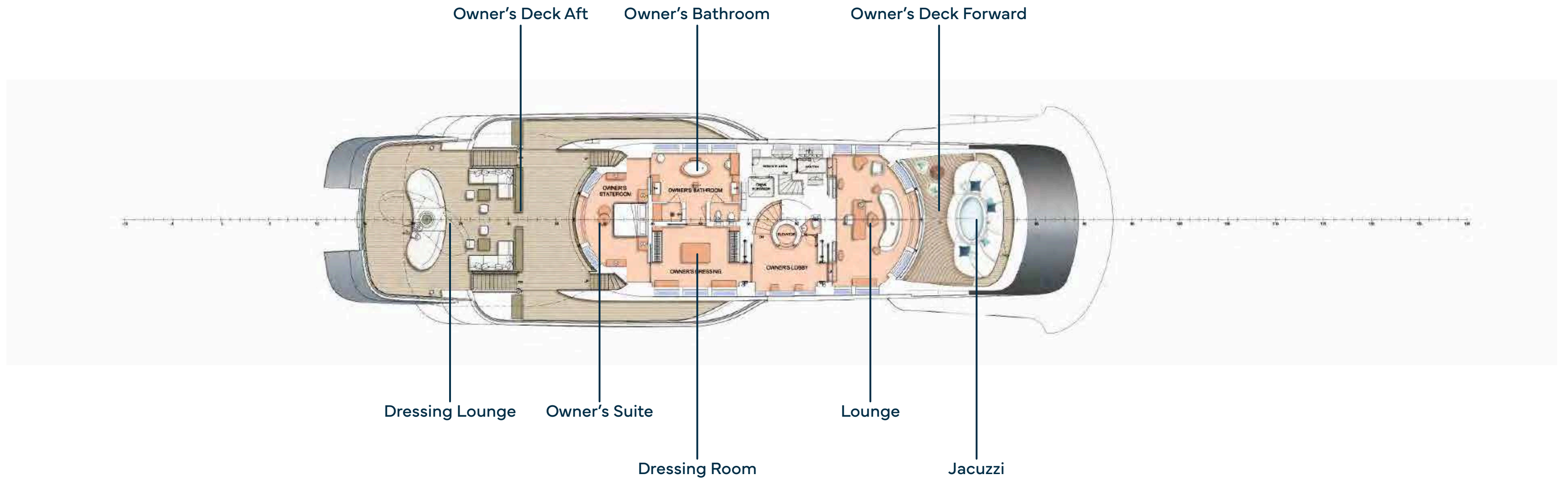
## Owner's Deck

The Owner's Deck offers an exclusive retreat, spanning 135 square meters of interior space, dedicated entirely to the owner's suite, lavish bathroom, dressing room and private office, complemented by private access to a stunning teak-covered outdoor lounge/helideck.

Additional outdoor spaces, including the panoramic aft-facing lounge and forward jacuzzi area, are designed for ultimate comfort and privacy, creating an unparalleled oasis for the owner.



# General arrangement



LUNA

OWNER'S DECK / JACUZZI



LUNA

OWNER'S DECK / LOUNGE



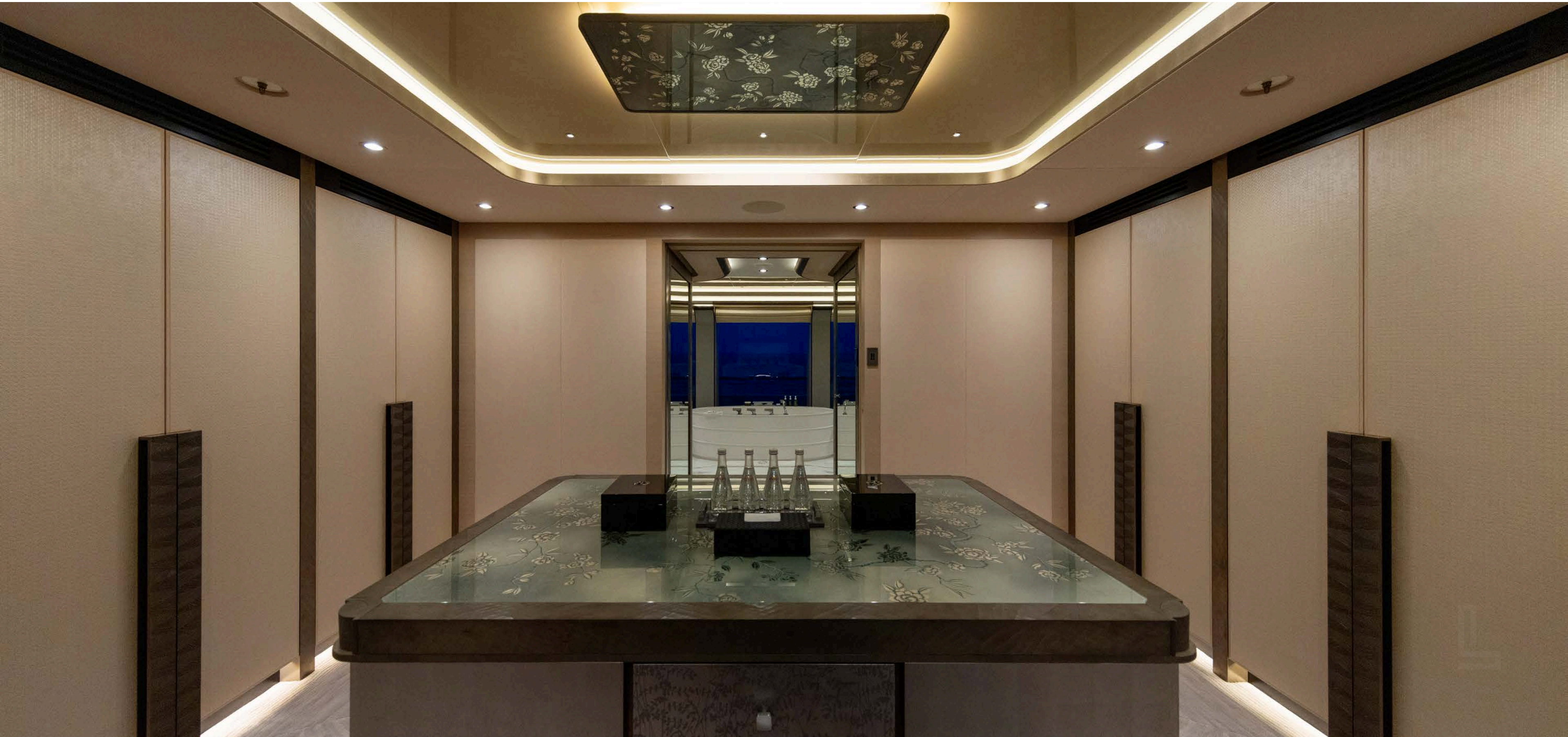
LUNA

OWNER'S DECK / LOUNGE



LUNA

OWNER'S DECK / DRESSING ROOM



LUNA

OWNER'S DECK



## Owner's Bathroom

The Owner's deck features a spa tub within the luxurious grand en suite, offering ocean views while you indulge in a bath.

Additionally, there is a separate terrace at the front, complete with a jacuzzi, providing complete privacy.



LUNA

OWNER'S DECK / BATHROOM



LUNA

OWNER'S DECK / SUITE



LUNA

OWNER'S DECK / AFT



LUNA

OWNER'S DECK / AFT



LUNA

OWNER'S DECK / AFT



LUNA

OWNER'S DECK / AFT

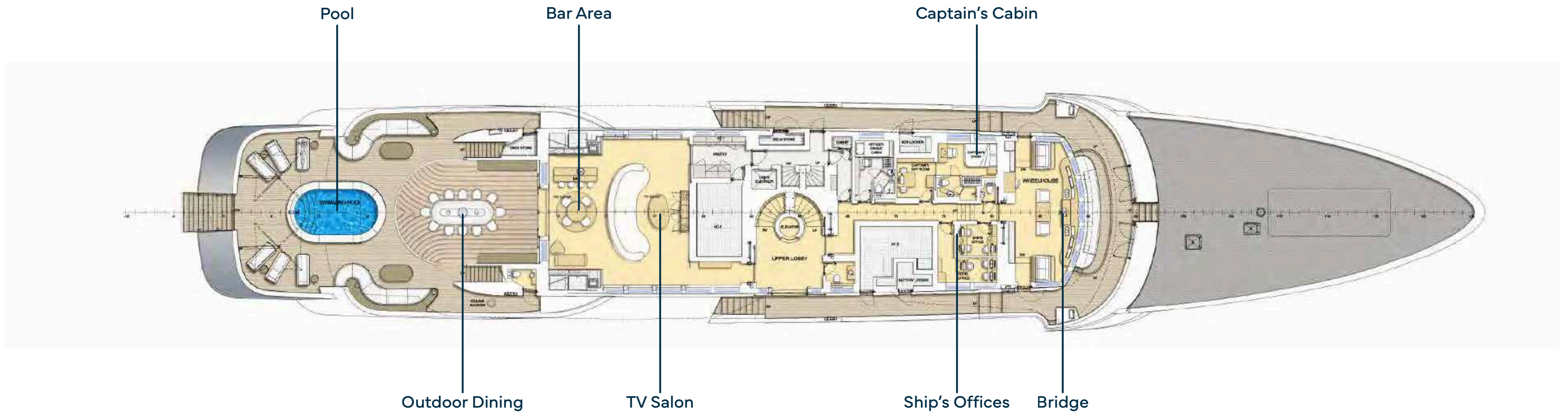


LUNA

OWNER'S DECK / AFT



# General arrangement



LUNA

UPPER DECK



# Pool

Immerse yourself in the inviting 6-metre pool, where you can swim effortlessly against the gentle countercurrent.

Twin oversized umbrellas gracefully pivot to your desired angle, providing the perfect shade for your comfort.

Unwind on the plush sunbeds or recline on the serpentine side sofas, creating a haven of relaxation and leisure.



LUNA

UPPER DECK / OUTDOOR DINING



LUNA

UPPER DECK / OUTDOOR DINING



LUNA

UPPER DECK / POOL



LUNA

UPPER DECK / OUTDOOR DINING



LUNA

UPPER DECK / OUTDOOR DINING



LUNA

UPPER DECK / POOL



LUNA

UPPER DECK / BAR AREA



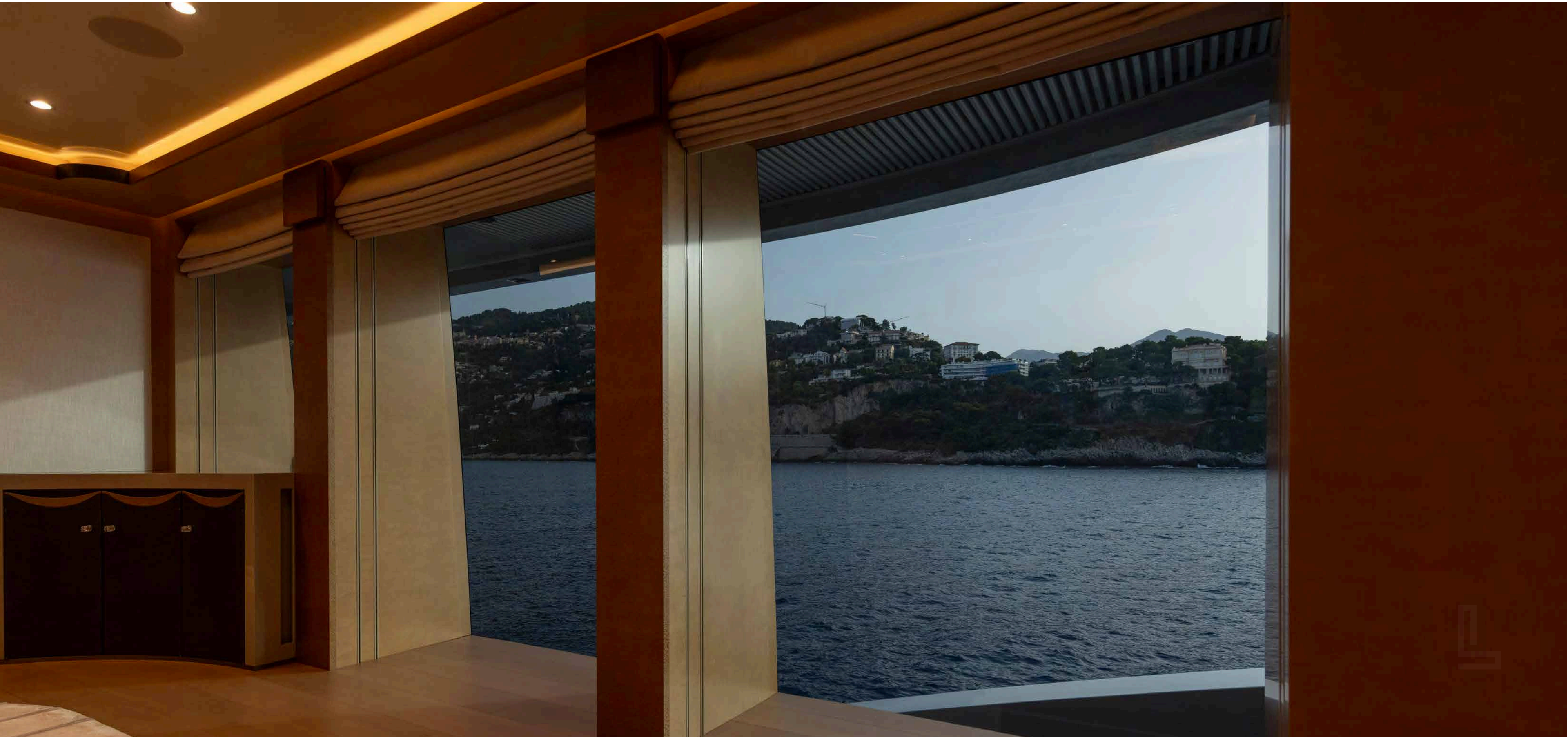
LUNA

UPPER DECK / TV SALON



LUNA

UPPER DECK / TV SALON

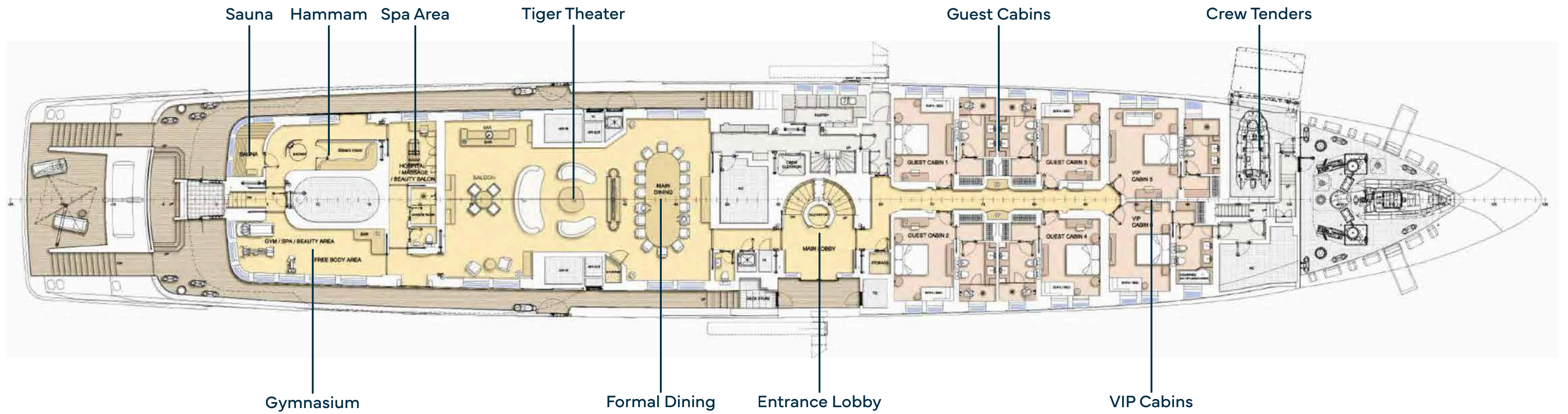


LUNA

UPPER DECK



# General arrangement



LUNA

MAIN DECK / TIGER THEATER



LUNA

MAIN DECK / TIGER THEATER



LUNA

MAIN DECK / TIGER THEATER



LUNA

MAIN DECK / TIGER THEATER



LUNA

MAIN DECK / TIGER THEATER



LUNA

MAIN DECK / TIGER THEATER



LUNA

MAIN DECK / FORMAL DINING & TIGER THEATER



LUNA

MAIN DECK / FORMAL DINING & TIGER THEATER



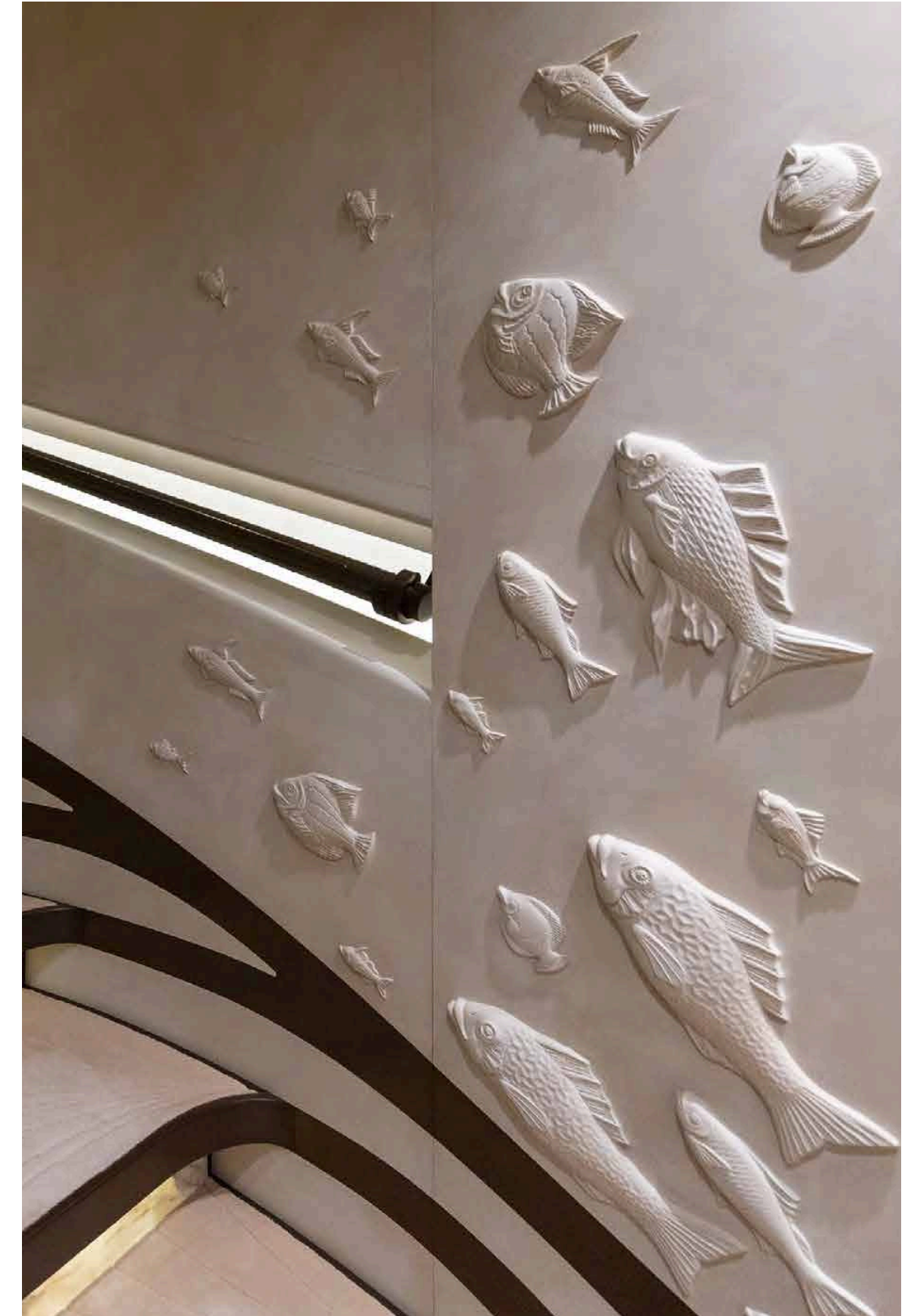
LUNA

MAIN DECK



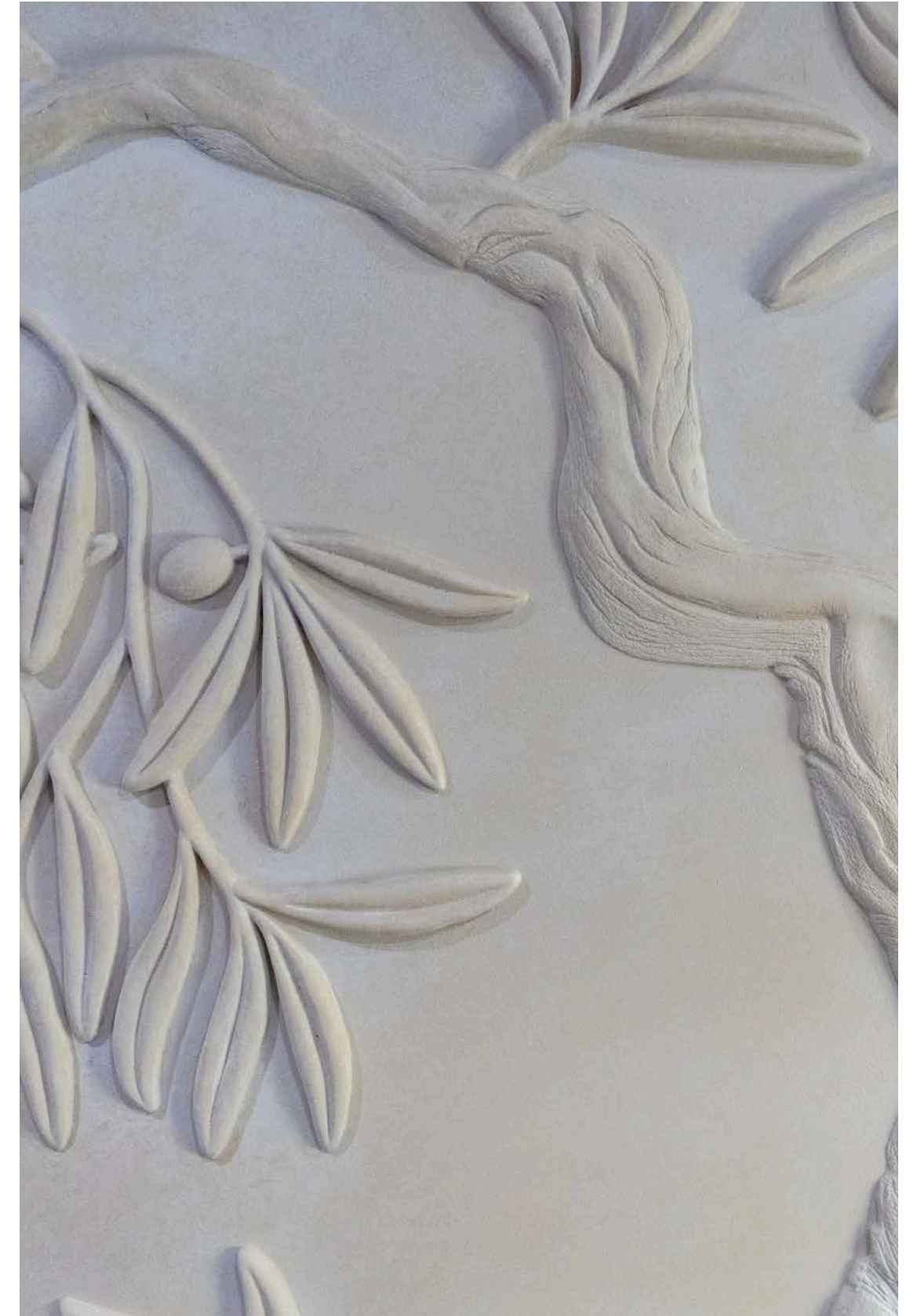
LUNA

MAIN DECK



LUNA

MAIN DECK



LUNA

MAIN DECK



## VIP Guest Cabin

The remaining guest quarters, comprising two VIP cabins and four double cabins, can be found forward on the main deck.



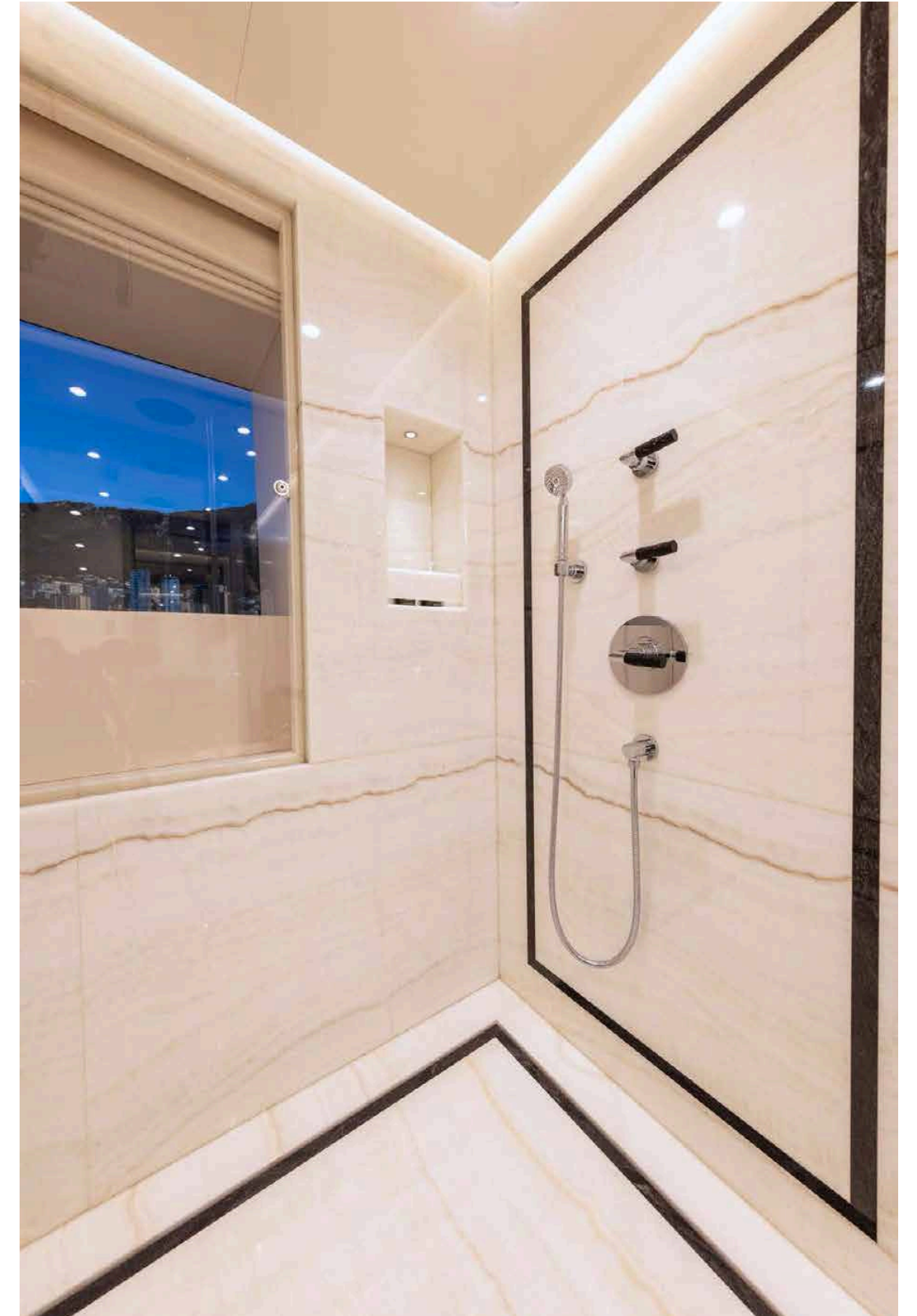
LUNA

MAIN DECK / VIP GUEST CABIN



LUNA

MAIN DECK / BATHROOM



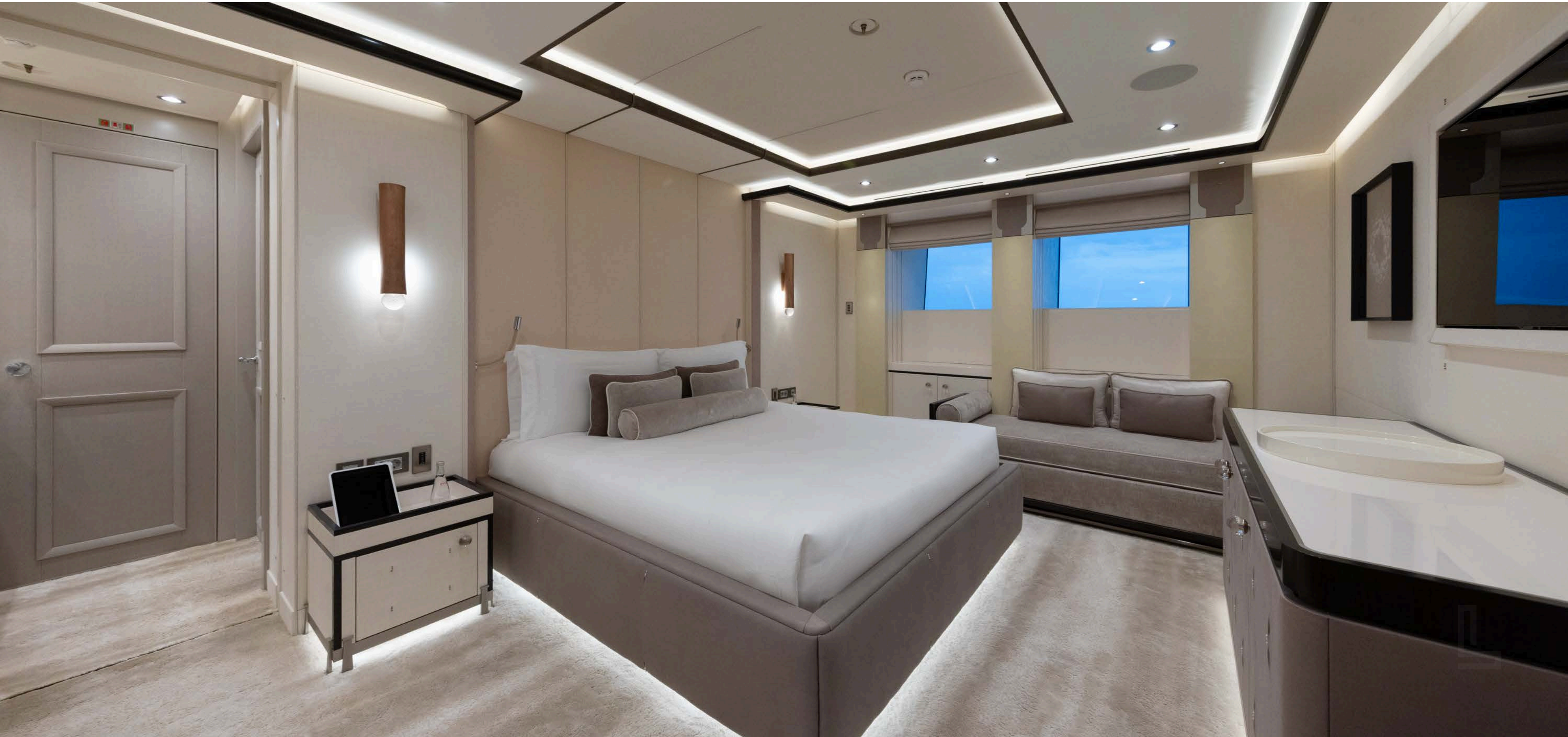
LUNA

MAIN DECK / DOUBLE GUEST CABIN



LUNA

MAIN DECK / DOUBLE GUEST CABIN



LUNA

MAIN DECK / DOUBLE GUEST CABIN



LUNA

MAIN DECK / BATHROOM



LUNA

MAIN DECK



# Gymnasium

Step into luxury within the confines of a 70-square-meter studio that seamlessly blends wellness and opulence.

Enjoy panoramic sea views while engaging in a workout session with the state-of-the-art Technogym equipment.



LUNA

MAIN DECK / GYMNASIUM



LUNA

MAIN DECK / SAUNA



LUNA

MAIN DECK



# Hammam

Immerse yourself in a luxurious retreat where a hammam and a walk-in rain shower await, creating a sanctuary adorned with opulence.



LUNA

MAIN DECK / HAMMAM



LUNA

MAIN DECK



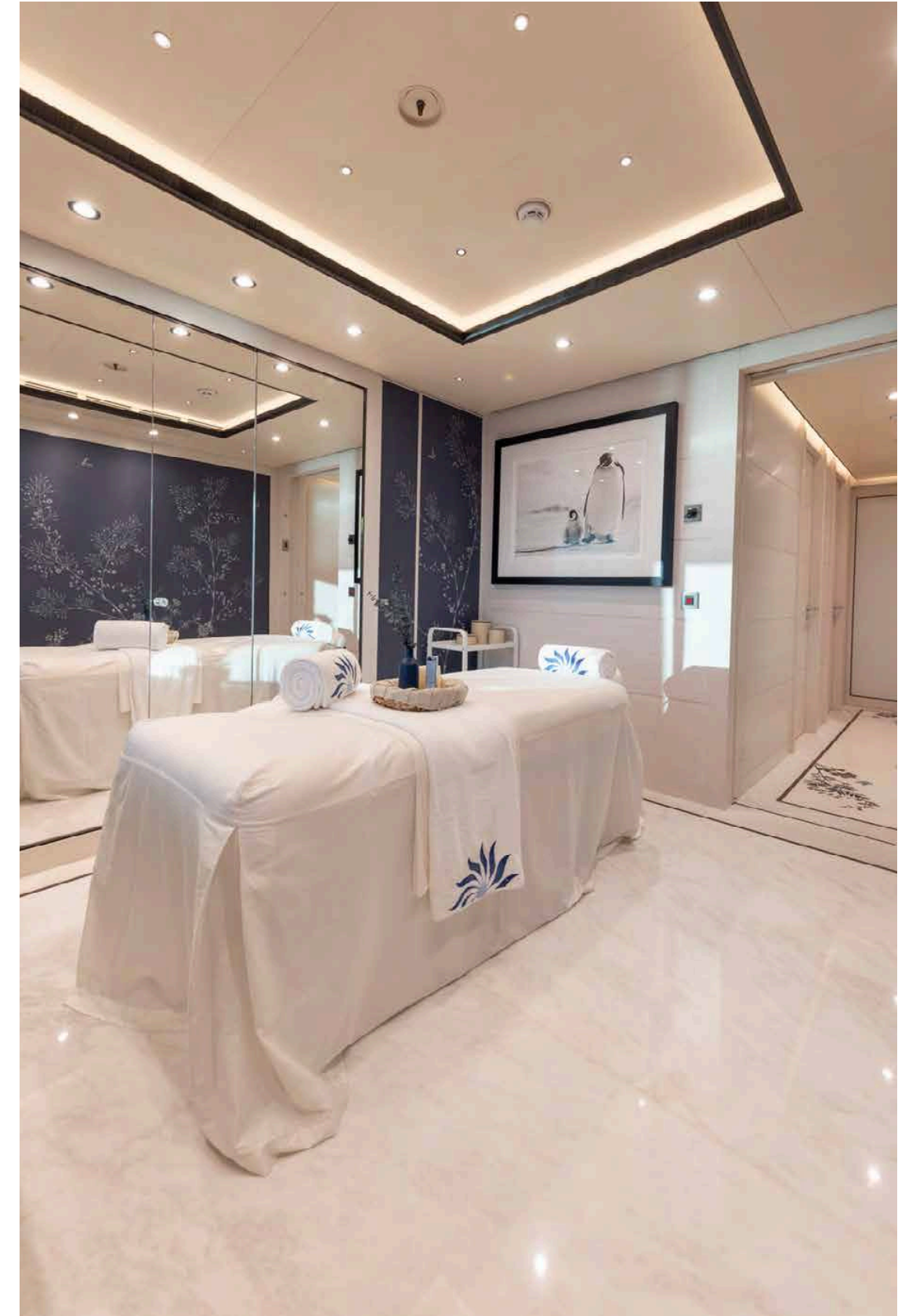
## Spa Area

The ambience is elevated by Prussian blue silk wallpaper adorned with meticulously hand-painted and appliquéd Japanese flowers, creating an atmosphere of tranquillity and sophistication in the serene beauty salon.

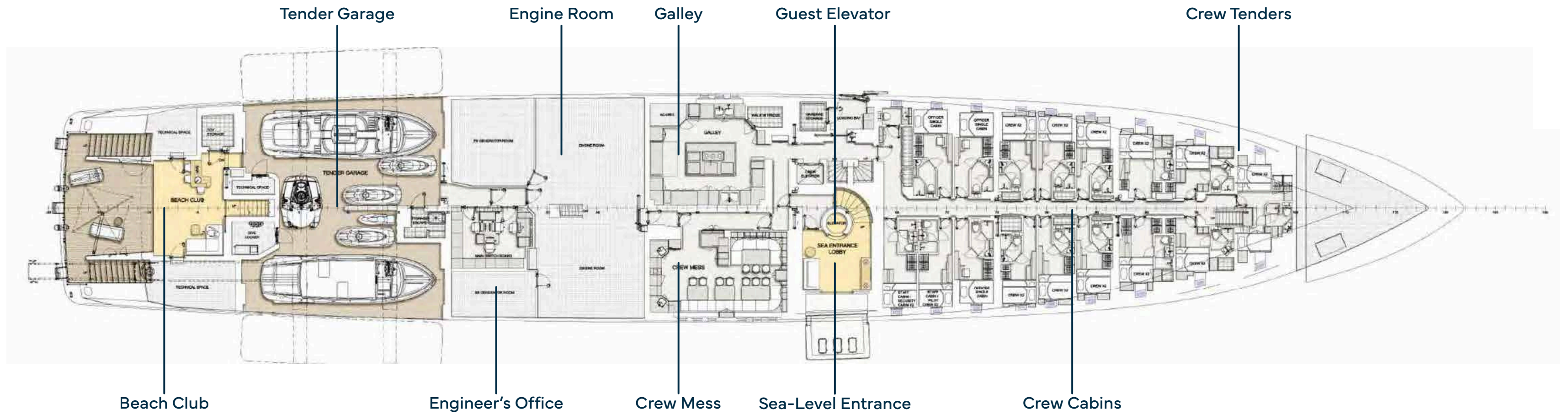


LUNA

MAIN DECK / SPA AREA



# General arrangement



LUNA

LOWER DECK / BEACH CLUB



LUNA

LOWER DECK / BEACH CLUB



LUNA

LOWER DECK / BEACH CLUB



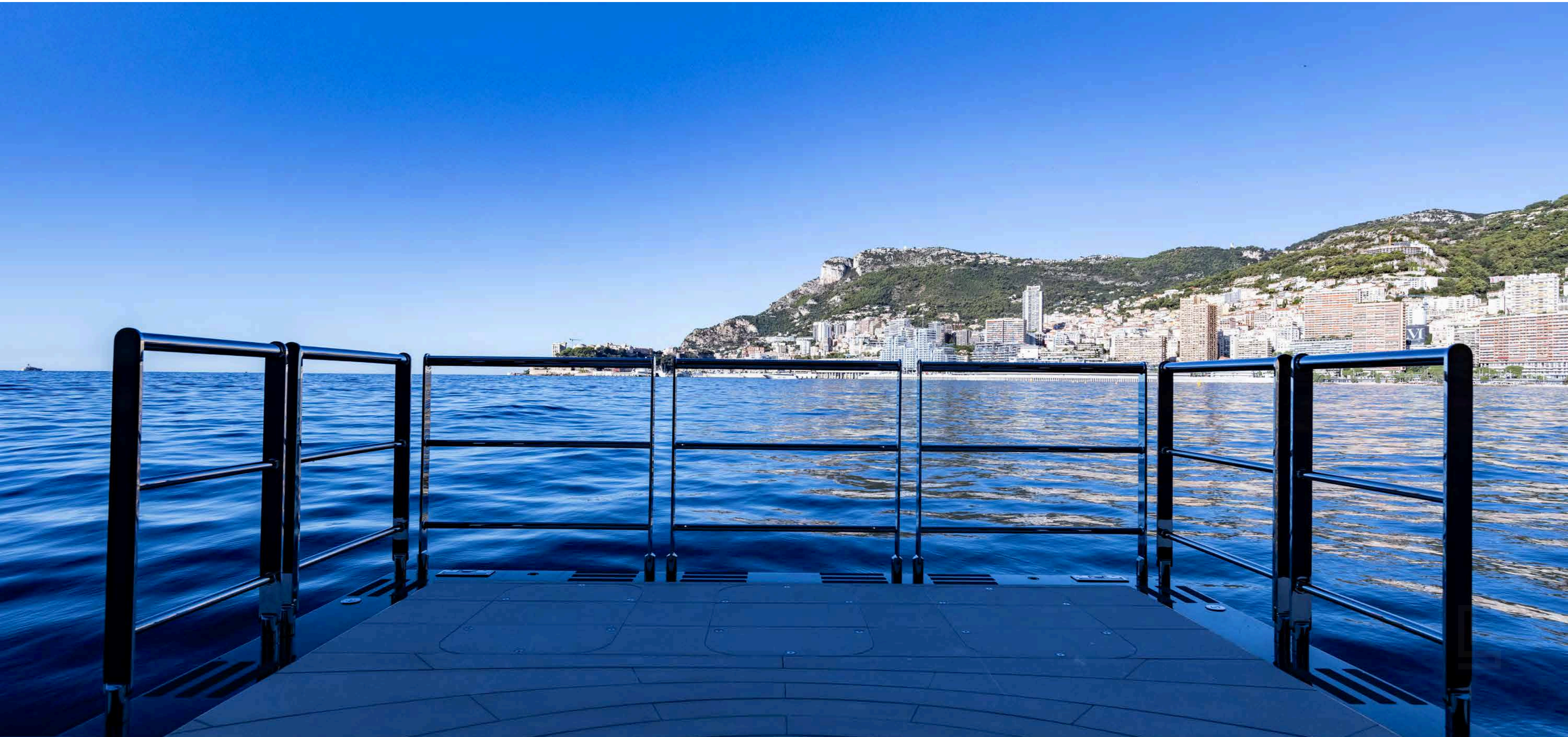
LUNA

LOWER DECK / SEA-LEVEL ENTRANCE



LUNA

LOWER DECK / SEA-LEVEL ENTRANCE



LUNA

LOWER DECK / SEA-LEVEL ENTRANCE



LUNA

LOWER DECK / SEA-LEVEL ENTRANCE



LUNA

LOWER DECK / TENDER GARAGE



LUNA

LOWER DECK / TENDER GARAGE



LUNA

## Twin-win tenders

The two exquisite 10.5-meter Hodgdon tenders epitomize unparalleled excellence.

Both the limousine and open tender showcase a perfect blend of speed, stability, and exquisite craftsmanship.

These tenders stand as a seamless extension of the yacht, embodying the highest standards of quality and luxurious comfort.



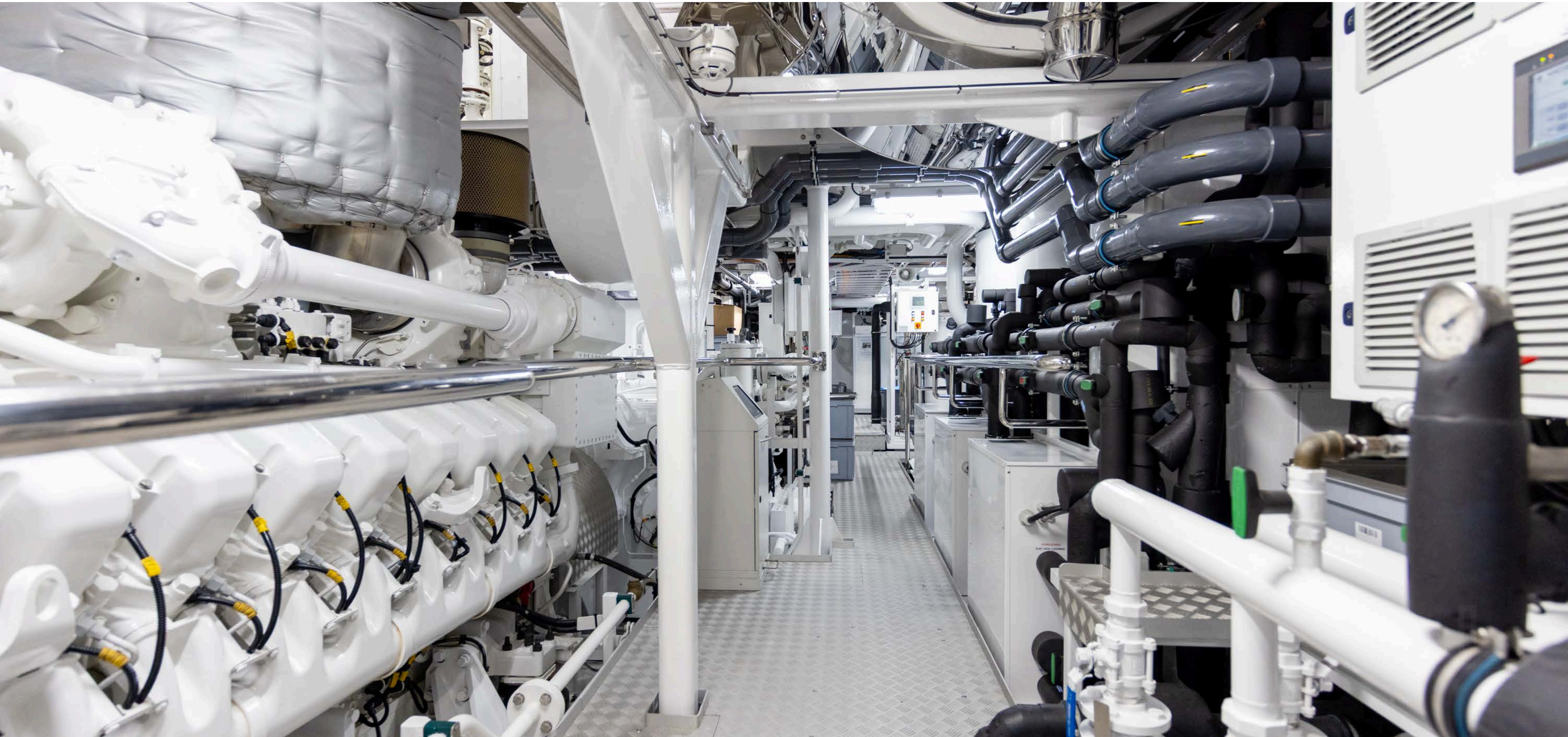
LUNA

LOWER DECK / TECHNICAL SPACE



LUNA

LOWER DECK / TECHNICAL SPACE



LUNA

UPPER DECK / NAVIGATION BRIDGE



LUNA

# SPECIFICATIONS



# LUNA

# SPECIFICATIONS

## CHARACTERISTICS

---

<b>Name:</b>	LUNA
<b>Builder:</b>	Oceanco
<b>Year Built:</b>	2018
<b>Type:</b>	Displacement Motor Yacht
<b>Hull No.:</b>	Y717
<b>IMO:</b>	1013066
<b>Classification:</b>	Lloyd's Register
<b>Flag:</b>	Cayman Islands
<b>Naval Architect:</b>	Azure Naval Architects B.V.
<b>Exterior Designer:</b>	Luiz de Basto Design
<b>Interior Designer:</b>	Nuvolari & Lenard Valentina Zannier Interiors (Refit 2024)
<b>Construction:</b>	Steel Hull Aluminium Superstructure Teak Decks
<b>Displacement:</b>	2,355
<b>Heli Decks:</b>	1x Fwd Deck - Max load 3.8t 1x Sun Deck - Max load 3.0t

## DIMENSIONS

---

<b>Length Overall:</b>	90.00 m (295'3")
<b>Length Waterline:</b>	77.20 m (253'3")
<b>Beam:</b>	14.20 m (46'7")
<b>Max Draft:</b>	4.05 m (13'3")
<b>Gross Tonnage:</b>	2.926
<b>Net Tonnage:</b>	877





## SPEED & RANGE UNDER POWER

<b>Maximum Speed:</b>	20 Knots
<b>Cruising Speed:</b>	13 Knots
<b>Fuel Consumption:</b>	Approx. 500 Litres / hour @ 13 Knots
<b>Range:</b>	5,500NM @ 13 Knots

## CAPACITIES

<b>Accommodation:</b>	14 Guests in 7 cabins
<b>Crew:</b>	Up to 31 x Crew in 16 cabins
<b>Fuel:</b>	278,000 litres / 73,440 US gallons
<b>Petrol:</b>	1,000 litres / 264 US gallons
<b>Fresh water:</b>	115,000 litres / 33,380 US gallons
<b>Holding tank:</b>	14,700 litres / 3,883 US gallons
<b>Lube oil:</b>	5,000 litres / 1,321 US gallons
<b>Dirty oil:</b>	3,800 litres / 1,004 US gallons
<b>Sludge:</b>	5,900 litres / 1,559 US gallons
<b>Grey water:</b>	19,200 litres / 5,072 US gallons
<b>Black water:</b>	5,500 litres / 1,453 US gallons
<b>Deck wash:</b>	27,000 litres / 7,133 US gallons
<b>Pool water:</b>	20,000 litres / 5,283 US gallons

## ACCOMMODATION

<b>Owner:</b>	1x Master cabin
<b>Guest:</b>	2x VIP cabins 4x Double cabins
<b>Crew:</b>	1x Captain cabin 1x Chief Officer cabin 15x Crew cabins 1x Staff cabin

# LUNA

# SPECIFICATIONS

## MECHANICAL EQUIPMENT

<b>Engines:</b>	2 x 3,600kW (4,828Hp) MTU 20V 4000 M73L, Diesel
<b>Engine hours:</b>	5836 (port) as of January 2026 5825 (stbd) as of January 2026
<b>Generators:</b>	3 x 498kW (668Hp) MTU 12V M51A
<b>Generator hours:</b>	15645 (port) as of January 2026 15248 (centre) as of January 2026 13609 (stbd) as of January 2026
<b>Gearbox:</b>	Reintjes WAF 1963
<b>Propulsion:</b>	Twin Screw Fix Blade
<b>Propellers:</b>	2 x SIP Marine – 5 blades, 2500mm
<b>Rudder angle y:</b>	Mechanical, Analog & Digital
<b>Steering system:</b>	Rolls Royce
<b>Stabilisers:</b>	4 x Quantum QC2200XT – zero speed
<b>Bow thruster:</b>	Voith GmbH & Co. KGa 400kW in-line thruster
<b>Stern thruster:</b>	Veth 286kW foldable & Azumithing
<b>Electricity:</b>	400V / 240V / 24V
<b>Shore power:</b>	2 x transformers – 400V 50Hz 430kVA
<b>Batteries:</b>	UPS ABB New Mastervolt AGM instaled for: 2X main engines, 3 X generators, 1 X emergency generator
<b>Chargers:</b>	Siemens
<b>Converters:</b>	Siemens
<b>Hydraulics:</b>	Van Driel
<b>Air conditioning:</b>	Heinen & Hopmann
<b>Water maker:</b>	HEM 8040 Duplex
<b>Water system:</b>	Water Softener & AG – S Silver Ion Sterilizers
<b>Toilet system:</b>	EVAC
<b>Sewage system:</b>	Hamman
<b>Fuel centrifuge:</b>	SEPAR
<b>Fuel separator:</b>	Alfa Laval
<b>Garbage converter:</b>	OMPECO





## NAVIGATION EQUIPMENT

<b>Magnetic compass:</b>	Cassens & Plath
<b>Gyro compass:</b>	2 x Raytheon Anschutz STD22 Raytheon Anschutz
<b>Steering:</b>	SAM Electronics NACOS Platinum
<b>Automatic pilot echo:</b>	ELAC LAZ5100
<b>Sounder:</b>	FarSounder 500
<b>Sonar:</b>	SAM Electronics NACOS Platinum
<b>Radar:</b>	SAM Electronics NACOS Platinum
<b>DP:</b>	SAAB R5
<b>AIS:</b>	3x SAAB R5
<b>DGPS:</b>	SAAB R5
<b>GPS:</b>	SAM Electronics NACOS Platinum
<b>Chart plotter:</b>	SAM 2918
<b>Navtex:</b>	SAM 4900
<b>Log:</b>	Observer
<b>Wind &amp; weather:</b>	2x Senshin
<b>Searchlights:</b>	2x Panasonic
<b>Camera(s):</b>	Night Vision Camera – Vector Vision
<b>Miscellaneous:</b>	Horn - Kahlenberg

## COMMUNICATION EQUIPMENT

<b>Satcom:</b>	Sailor FBB500, FBB150
<b>VHF:</b>	Sailor 6215, 6222, 2 x 6248
<b>SSB:</b>	Sailor 6301
<b>Inmarsat C:</b>	2x Sailor 6110
<b>Iridium:</b>	2x SC4000
<b>Iridium:</b>	Iridium Extreme mobile unit
<b>Telephone exchange:</b>	AVAYA
<b>Intercom:</b>	PA
<b>VSAT:</b>	2x Sea Tel 5012
<b>Internet:</b>	2x Starlink Maritime
<b>GSM 4G/5G:</b>	Pepwave



## DECK EQUIPMENT

<b>Anchor windlasses:</b>	2 x Steen & Co GmbH
<b>Aft warping capstans:</b>	2 x Steen & Co GmbH
<b>Anchors:</b>	2 x HHP pull N type – 1,080 kg each
<b>Anchor chains:</b>	2 x 220 m – 36 mm Ø
<b>Boat crane &amp; davits:</b>	Cramm
<b>Passerelle:</b>	Staalart
<b>Side boarding ladder:</b>	Hydromar - Port and starboard
<b>Side boarding gangway:</b>	Hydromar
<b>Pool / jacuzzi:</b>	Yes
	New wind-protection glass added – upper deck pool area (2021)
<b>Swimming platform:</b>	Yes
<b>Guest elevator:</b>	Yes
<b>Awnings:</b>	Amber
<b>Covers:</b>	Yes

## ENTERTAINMENT EQUIPMENT

<b>TV Antenna:</b>	2x Sea Tel 6004
<b>General:</b>	Mediterranean: SKY UK, SKY Italy
	Caribbean: Direct TV
	Latin America DISH
	Airplay, Apple tv, Netflix, Amazon Prime, Disney, Paramount, Spotify
	X- Box
	Oculus YachtEye throughout the vessel
	All devices including light and temperature are I-pad controlled
	Backgammon, Chess, Cards, Monopoly



## GALLEY & LAUNDRY EQUIPMENT

<b>Galley:</b>	<p>Bijvanck central cooking island, including:        8x Induction plates, food heat lamp, griddle plate, Giorik salamander, double fryer, cold water tap.        2x Rational (self-cooking centre) ovens        Effeuno pizza oven        Foster under-counter freezer        Sirman blast freezer        Wessamat ice machine        2x Gram undercounter fridges        Hobart dishwasher        Zip Hydrotap        Panasonic microwave        Large walk-in fridge        Various accessories</p>
<b>Pantry:</b>	<p>Main deck, upper deck &amp; owner's deck:        Fridges, ice makers, Zip Hydrotaps, microwaves, wine cooler fridges, etc.</p>
<b>Laundry:</b>	<p>5 x Miele professional washing machines        5 x Miele professional dryers        Ghidini steam iron        Miele rotary iron</p>

## SECURITY & SAFETY EQUIPMENT

<b>Safety:</b>	<p>EPIRB Sailor SE406-11        2 x SART Sailor 11.9 GHz</p>
<b>Security:</b>	<p>Kaba central anti-intrusion system        2 x anti-piracy water cannons</p>
<b>Fire fighting:</b>	<p>Monitoring &amp; alarm system Consillium        Hi-Fog system Marioff</p>

# LUNA

# SPECIFICATIONS

## TENDERS & WATER-SPORTS EQUIPMENT

- Inflatables:**
- 1 x sailboat – Tiwal inflatable
  - 1 x 10 x 6.6 m inflatable pool – Freestyle
  - 1 x Zorb (sphere for a person to step into and roll on the water)
  - 1 x 1-person SUP – Red Paddle
  - 1 x 3-person SUP – Red Paddle
- Towables:**
- 1 x windsurf – Fanatic
  - 1 x kitesurf – Cabrinha 12 m<sup>2</sup>
  - 1 x kitesurf – Cabrinha 8 m<sup>2</sup>
  - 1 x waterski – Jobe
  - 1 x kneeboard – Jobe
  - 1 x wakeboard – Jobe
  - Towables Jobe (banana, donut, Binar, Sonar)
- Accessories:**
- 1 x 15 m slide – Freestyle
  - 1 x Liquid Force magic carpet 6' x 18'
  - Life vests and helmets – Liquid Force
- Tenders:**
- 1 x 10.50 m Hodgdon Yachts custom open
  - 1 x 10.50 m Hodgdon Yachts custom limo
  - 1 x 6.20 m Cobra Patronus crew tender
- Toys:**
- 1 x WaveRunner Sea-Doo GTR STD 230 (2021)
  - 1 x JetSurf Ultra Sport
  - 1 x Fliteboard
  - 1 x AirDrone – DJI Inspire 2
  - 1 x underwater drone – iBubble
  - 2 x WaveRunner Sea-Doo GTX LTD 300 (2021)
  - 2 x 1-person Prijon kayak
  - 4 x 2-person Biwok kayak
  - 4 x Seabob Kayago F5 SR
  - 5 x Gocycle bicycle



# LUNA

# SPECIFICATIONS

## DIVING EQUIPMENT

---

- BCD: Scuba Pro
- Tanks: Luxfer – 11 lt and 9 lt
- Regulators: Apex
- Wet suits: Scuba Pro – 3 mm and 5 mm (short and long)
- Fins: Mares
- Masks: Atomic Aquatics, Ocean Reef
- Boots: Scuba Pro
- Weights: Scuba
- Pro computer: Suunto
- Cameras: GoPro
- Assortment of snorkelling gear: Cressi, Ocean Reef

## GYMNASIUM & WELLNESS

---

- |                   |  |
|-------------------|--|
| <b>Gymnasium:</b> | 1 x Skillrun Technogym<br>1 x bike Technogym<br>1 x Excite Synchro<br>Technogym weights<br>Yoga mats |
| <b>Wellness:</b>  | Hammam<br>Sauna<br>Massage / beauty salon  |



LUNA



LUNA

LUNA

**Disclaimer**  
This document is not contractual. All specifications are given in good faith and offered for informational purposes only. The publisher and company do not warrant or assume any legal liability or responsibility for the accuracy, completeness, or usefulness of any information and/or images displayed. Yacht inventory, specifications and prices are subject to change without prior notice. None of the text and/or images used in this brochure may be reproduced without written consent from the publisher.

# LARGEYACHT.CO

**FOR INQUIRIES &  
MORE INFORMATION CONTACT**

**VESA KAUKONEN**

Founder & CEO

**M:** +33 643 915 414 | **E:** vk@largeyacht.co

**O:** 25 Boulevard Albert 1er, 98000 Monaco

**[www.largeyacht.co](http://www.largeyacht.co)**

