



LUNA

FOR SALE

OCEANCO | 90 M (295.27 FT) | 2018/2024

LUNA

Built by Oceanco, with exterior design by Luiz de Basto Design and interiors by Nuvolari & Lenard / Valentina Zannier Interiors, the 90m yacht LUNA is now exclusively offered for sale.

Her impressive features include a complete owner's deck, with a private salon and jacuzzi, a wellness area, and an impressive beach club. LUNA can accommodate up to 14 guests in perfect harmony.

ASKING PRICE

€ 218,000,000 (EX VAT)

Disclaimer: LUNA artwork and personal effects are not included in the sale.
Not for sale to U.S. residents in U.S. waters.

INTRODUCTION





LUNA looks like no other yacht.

LUNA's layout deviates from contemporary yacht designs. Her nearly 3,000 gross tons of volume have been allocated to each feature, providing ample space.

The entire vessel exudes a seamless elegance. Glistening white balconies and walkways, along with the roofline, sheer line, transom, and bridge, create an illusion of perpetual motion, especially accentuated by the sharply angular bow.

White streaks appear suspended in time against the backdrop of the deep black hull and reflective mirror-glass superstructure, adding an extra layer of captivating allure to the scene.



LUNA



Key features

Complete Owner's deck with a fully private salon and jacuzzi pool deck forward, isolated from cameras in total privacy

Two heli-decks for private use

Beach Club

Six-person elevator serving all guest decks

Pool with fresh water, counter current

Fully equipped gym with floor-to-ceiling windows

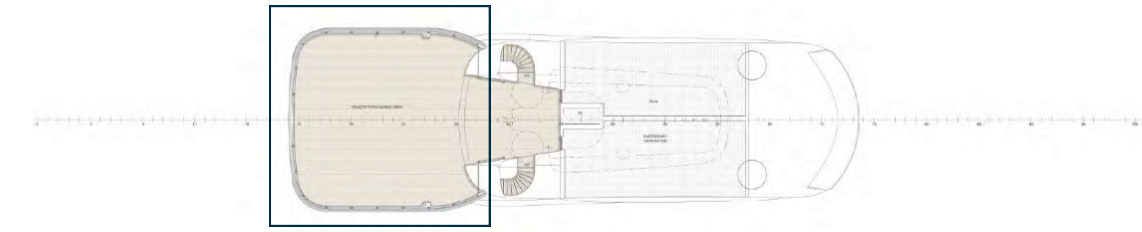
Wellness Area: Hammam, sauna, massage/ beauty salon



LUNA



LUNA



Heli decks

The two heli decks is also a versatile outdoor lounge, perfect for relaxation and entertainment.

With stunning views, it can easily transform for gatherings, sports, or even an outdoor cinema experience, making it an ideal space for leisure under the open sky.

Certified helipad for private use.



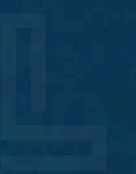
LUNA

HELI DECKS

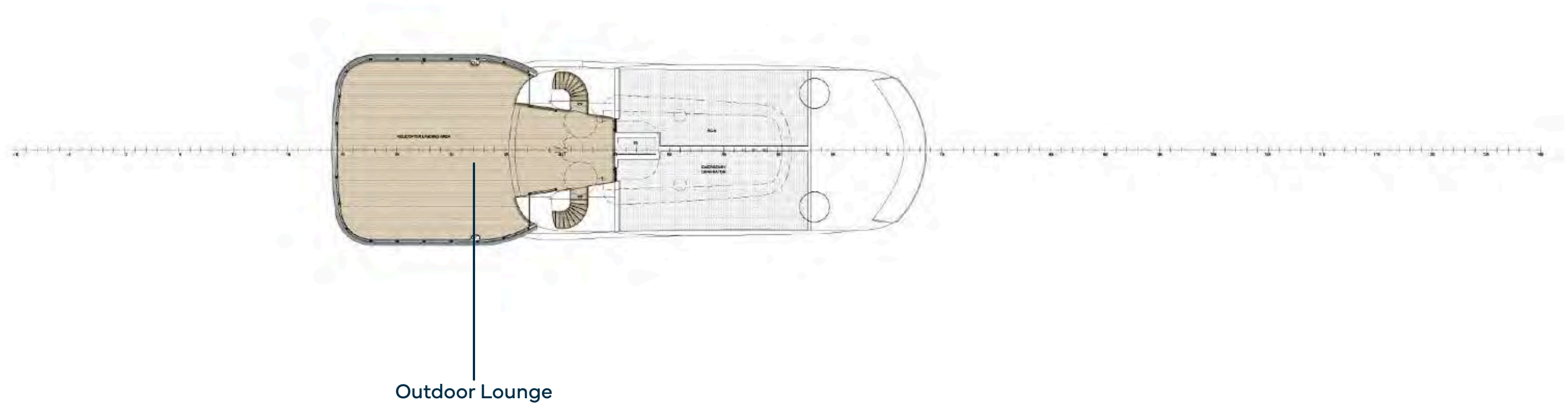


LUNA

HELI DECKS

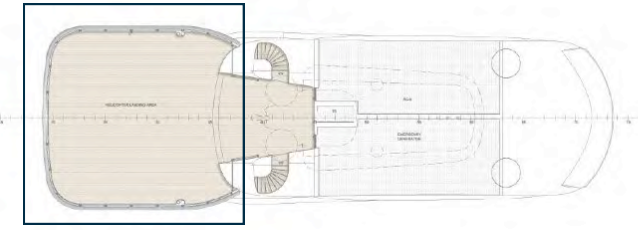


General arrangement



LUNA

HELI DECKS



LUNA



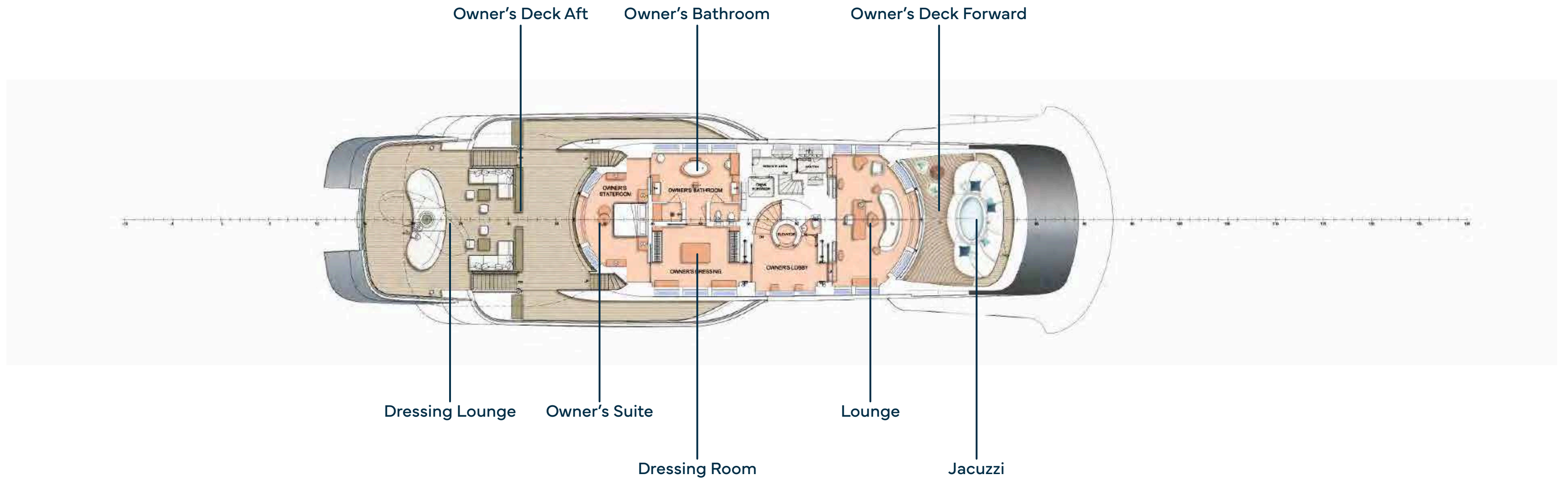
Owner's Deck

The Owner's Deck offers an exclusive retreat, spanning 135 square meters of interior space, dedicated entirely to the owner's suite, lavish bathroom, dressing room and private office, complemented by private access to a stunning teak-covered outdoor lounge/helideck.

Additional outdoor spaces, including the panoramic aft-facing lounge and forward jacuzzi area, are designed for ultimate comfort and privacy, creating an unparalleled oasis for the owner.



General arrangement



LUNA

OWNER'S DECK / JACUZZI



LUNA

OWNER'S DECK / LOUNGE



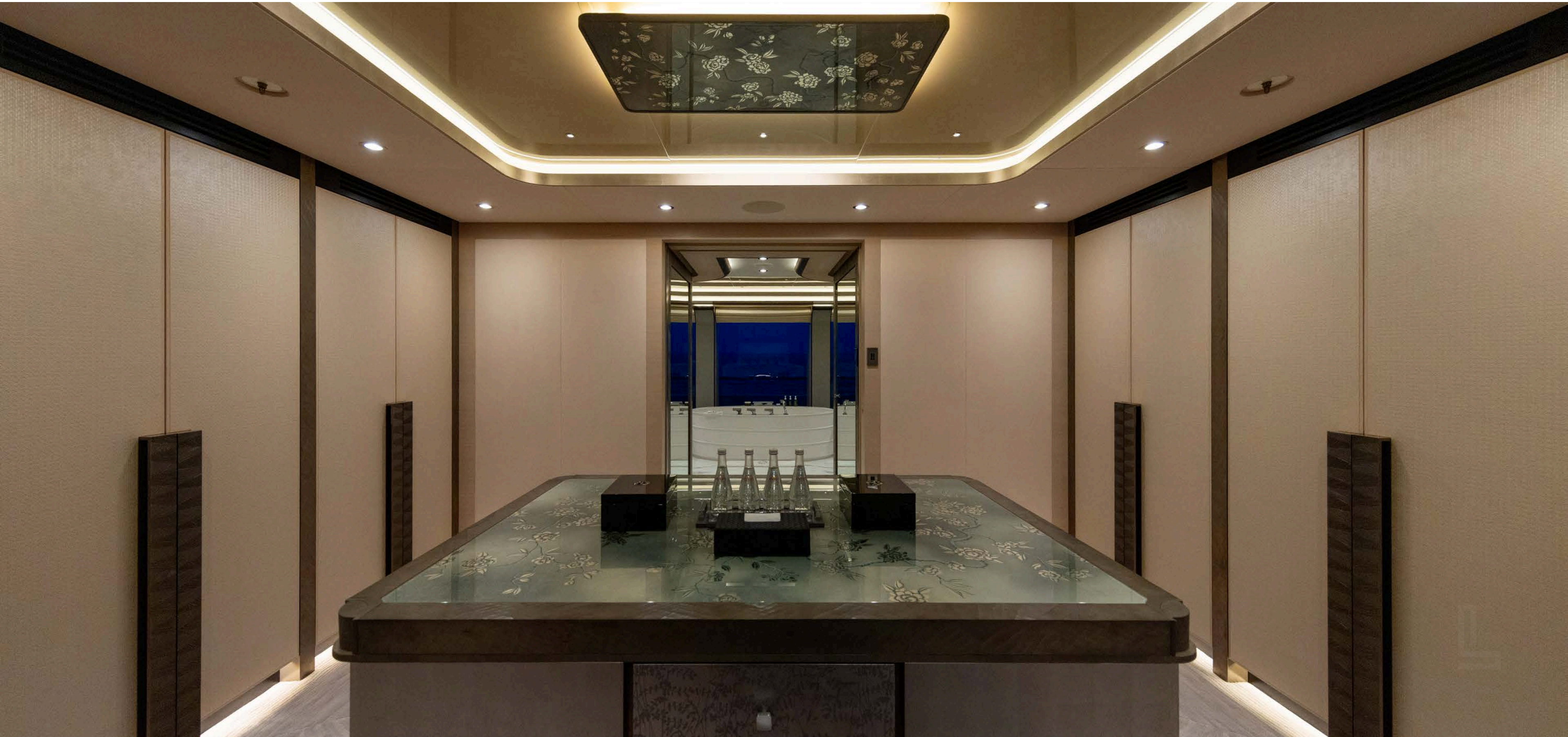
LUNA

OWNER'S DECK / LOUNGE



LUNA

OWNER'S DECK / DRESSING ROOM



LUNA

OWNER'S DECK



Owner's Bathroom

The Owner's deck features a spa tub within the luxurious grand en suite, offering ocean views while you indulge in a bath.

Additionally, there is a separate terrace at the front, complete with a jacuzzi, providing complete privacy.



LUNA

OWNER'S DECK / BATHROOM



LUNA

OWNER'S DECK / SUITE



LUNA

OWNER'S DECK / AFT



LUNA

OWNER'S DECK / AFT



LUNA

OWNER'S DECK / AFT



LUNA

OWNER'S DECK / AFT

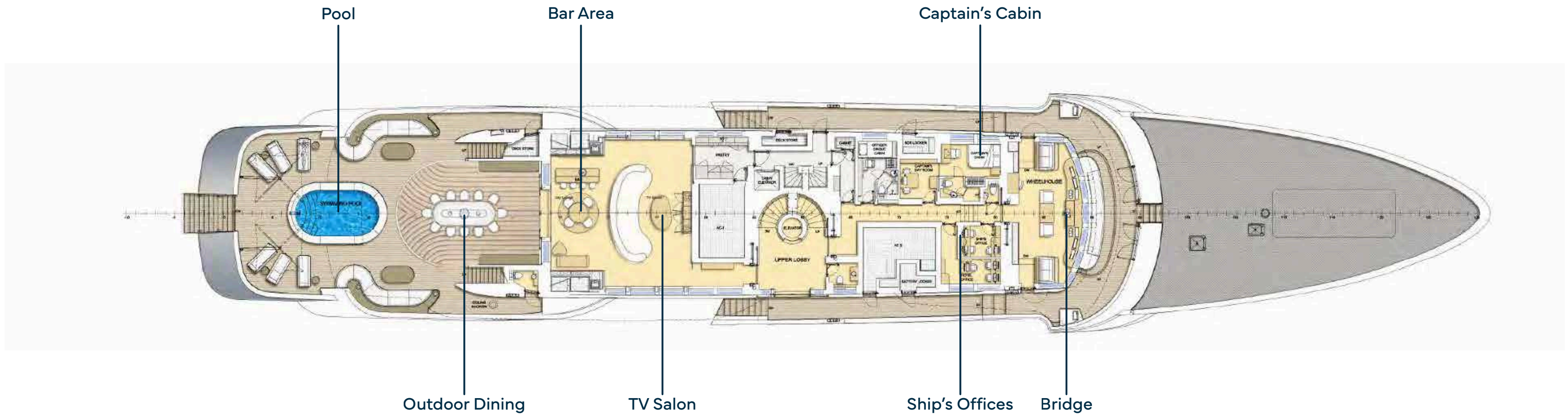


LUNA

OWNER'S DECK / AFT



General arrangement



LUNA

UPPER DECK



Pool

Immerse yourself in the inviting 6-metre pool, where you can swim effortlessly against the gentle countercurrent.

Twin oversized umbrellas gracefully pivot to your desired angle, providing the perfect shade for your comfort.

Unwind on the plush sunbeds or recline on the serpentine side sofas, creating a haven of relaxation and leisure.



LUNA

UPPER DECK / OUTDOOR DINING



LUNA

UPPER DECK / OUTDOOR DINING



LUNA

UPPER DECK / POOL



LUNA

UPPER DECK / OUTDOOR DINING



LUNA

UPPER DECK / OUTDOOR DINING



LUNA

UPPER DECK / POOL



LUNA

UPPER DECK / BAR AREA



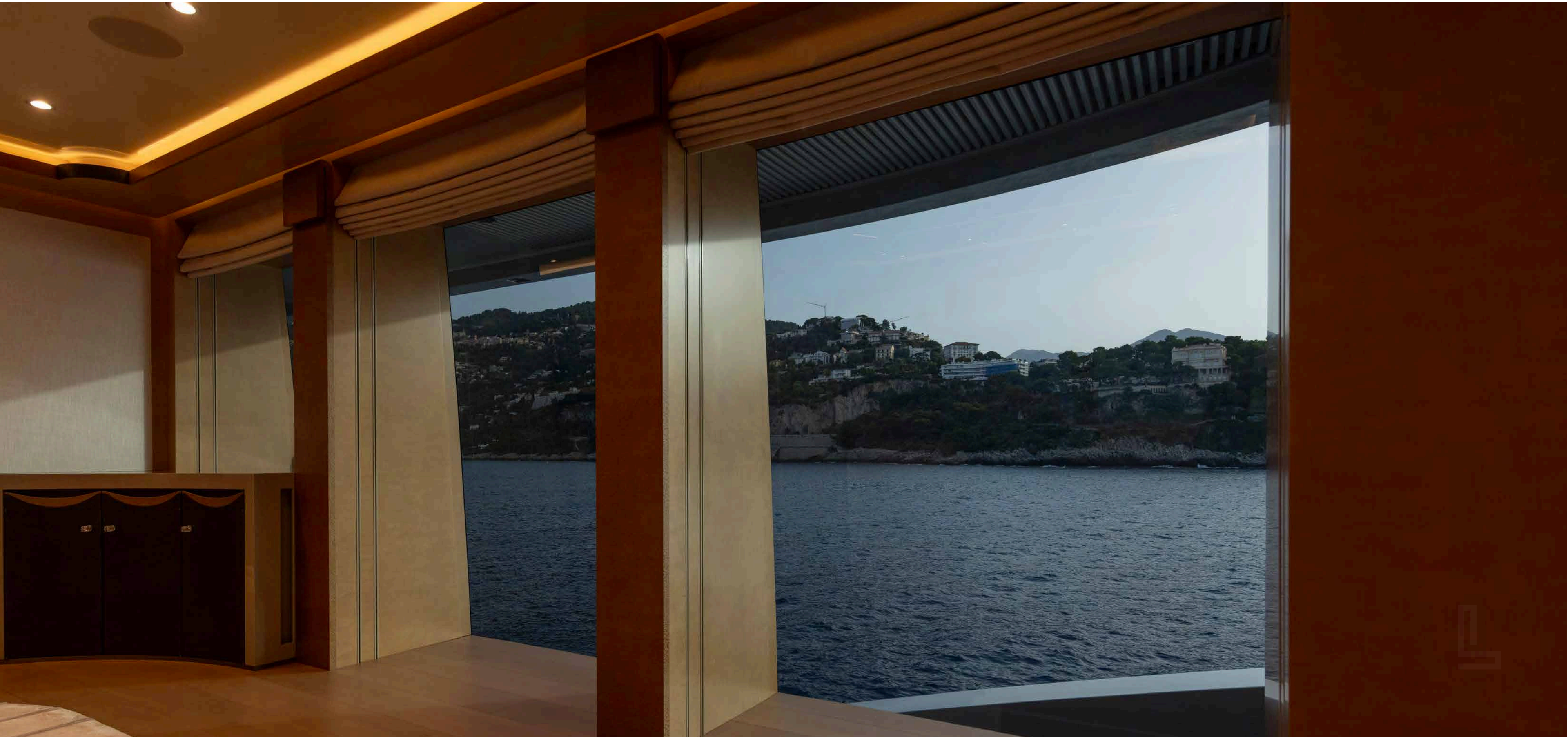
LUNA

UPPER DECK / TV SALON



LUNA

UPPER DECK / TV SALON

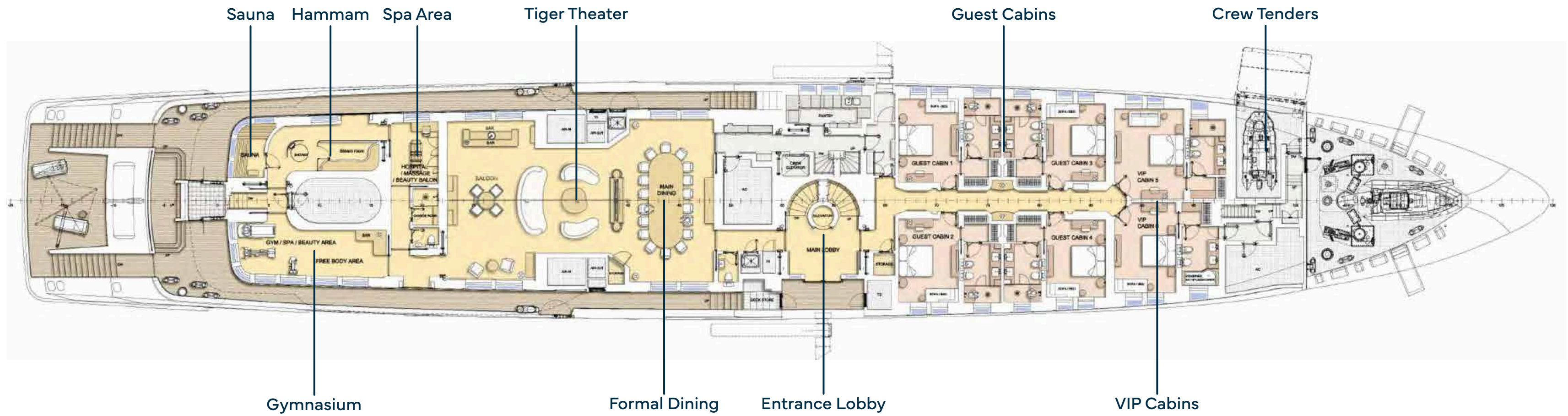


LUNA

UPPER DECK



General arrangement



LUNA

MAIN DECK / TIGER THEATER



LUNA

MAIN DECK / TIGER THEATER



LUNA

MAIN DECK / TIGER THEATER



LUNA

MAIN DECK / TIGER THEATER



LUNA

MAIN DECK / TIGER THEATER



LUNA

MAIN DECK / TIGER THEATER



LUNA

MAIN DECK / FORMAL DINING & TIGER THEATER



LUNA

MAIN DECK / FORMAL DINING & TIGER THEATER



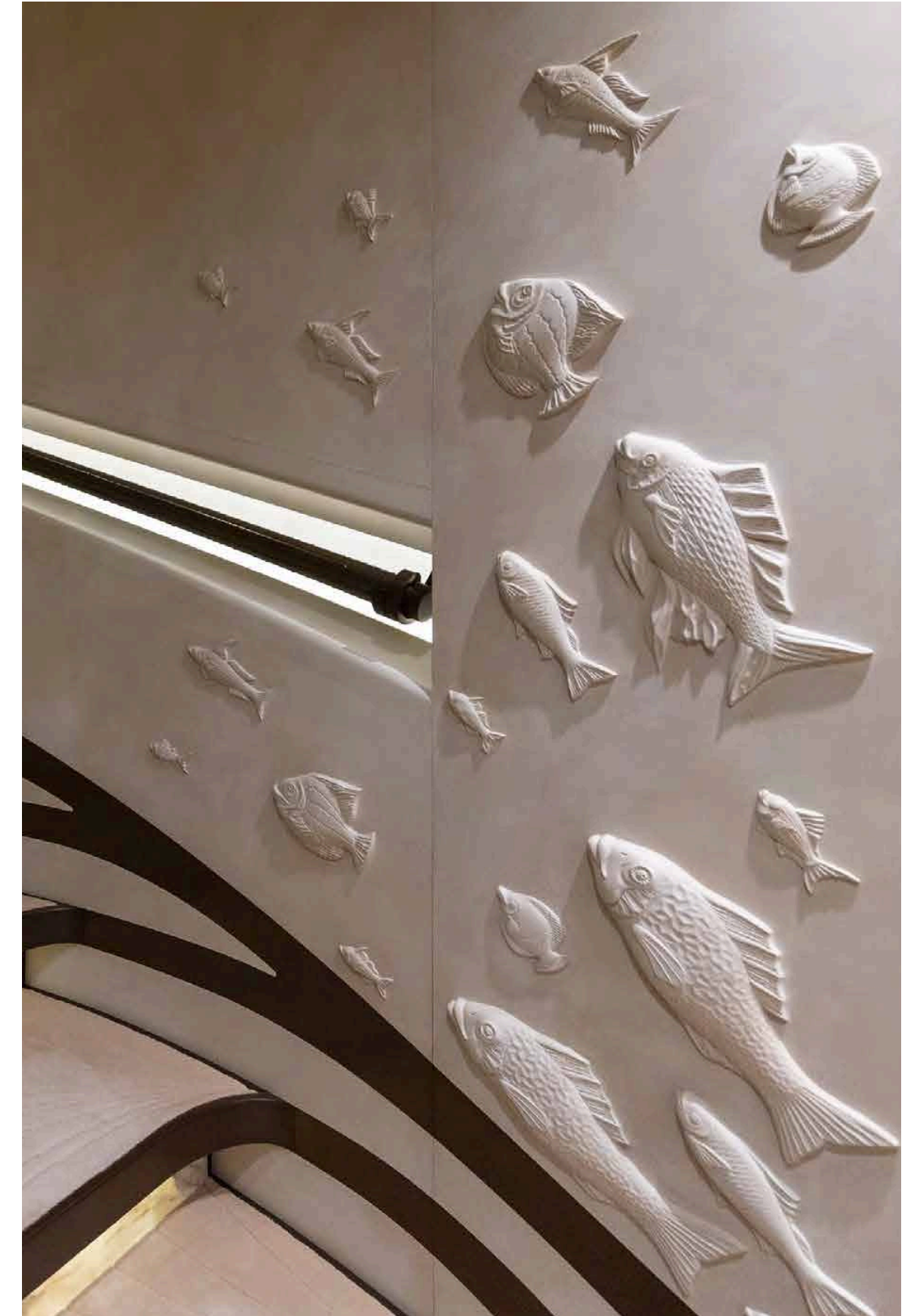
LUNA

MAIN DECK



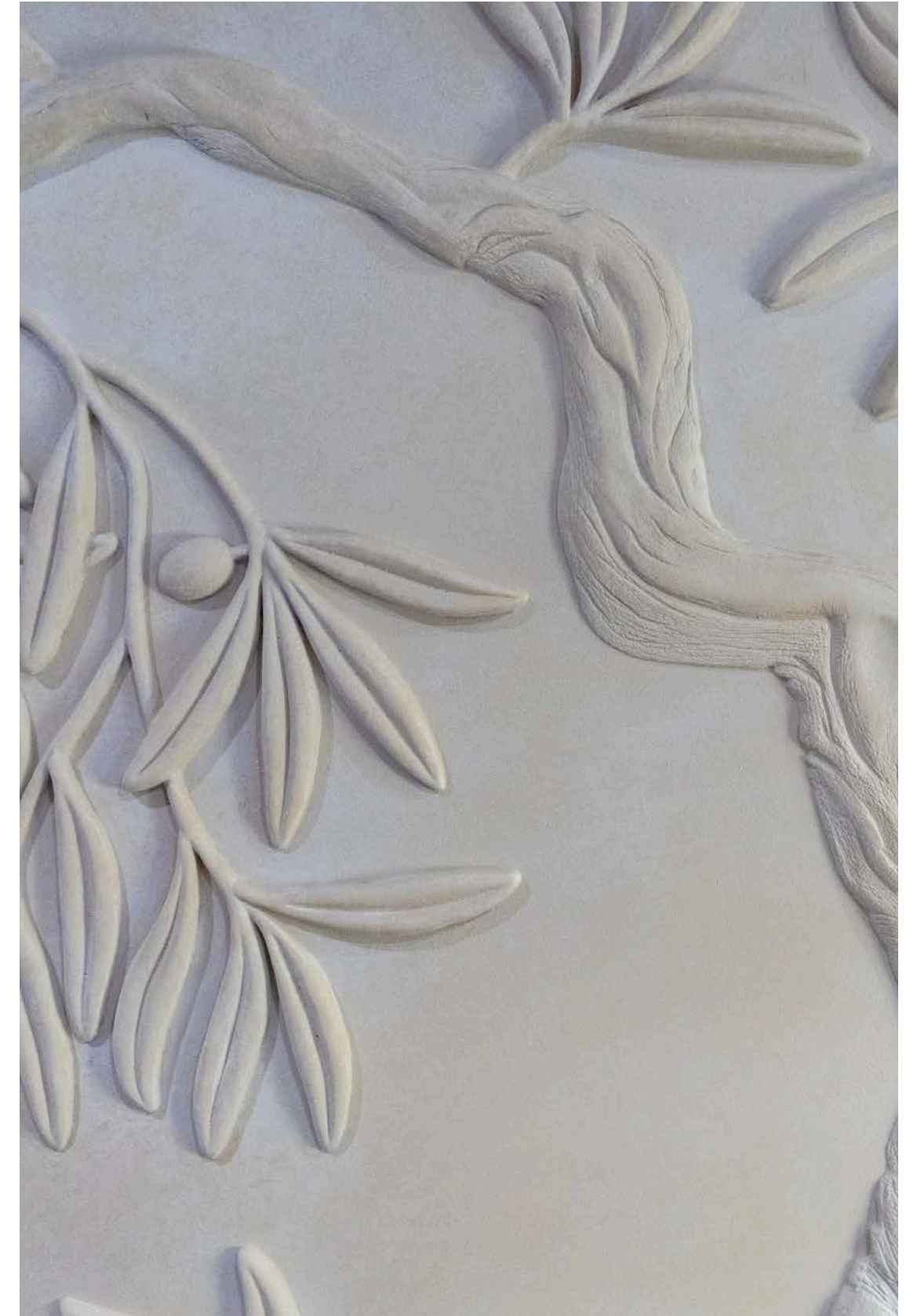
LUNA

MAIN DECK



LUNA

MAIN DECK



LUNA

MAIN DECK



VIP Guest Cabin

The remaining guest quarters, comprising two VIP cabins and four double cabins, can be found forward on the main deck.



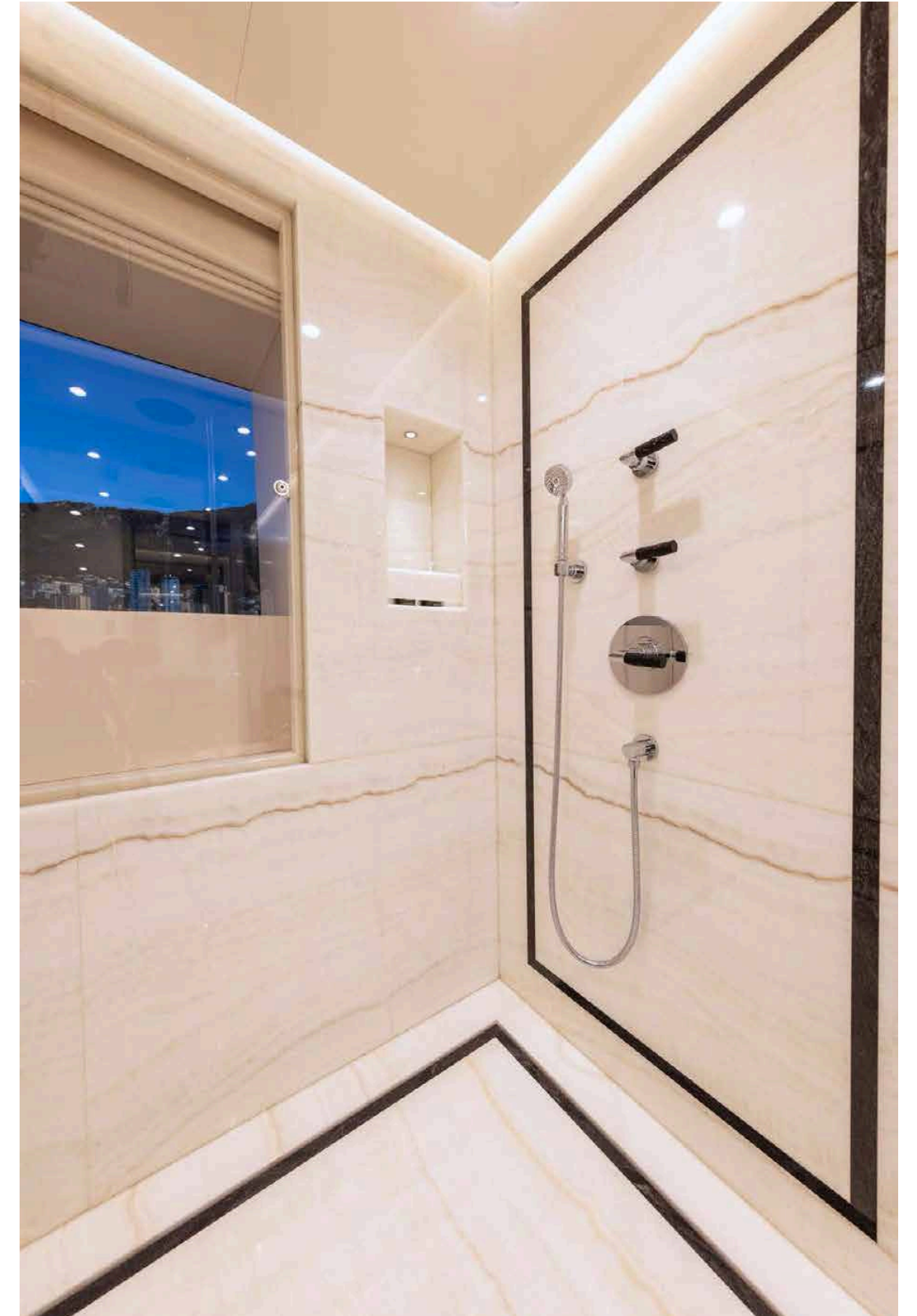
LUNA

MAIN DECK / VIP GUEST CABIN



LUNA

MAIN DECK / BATHROOM



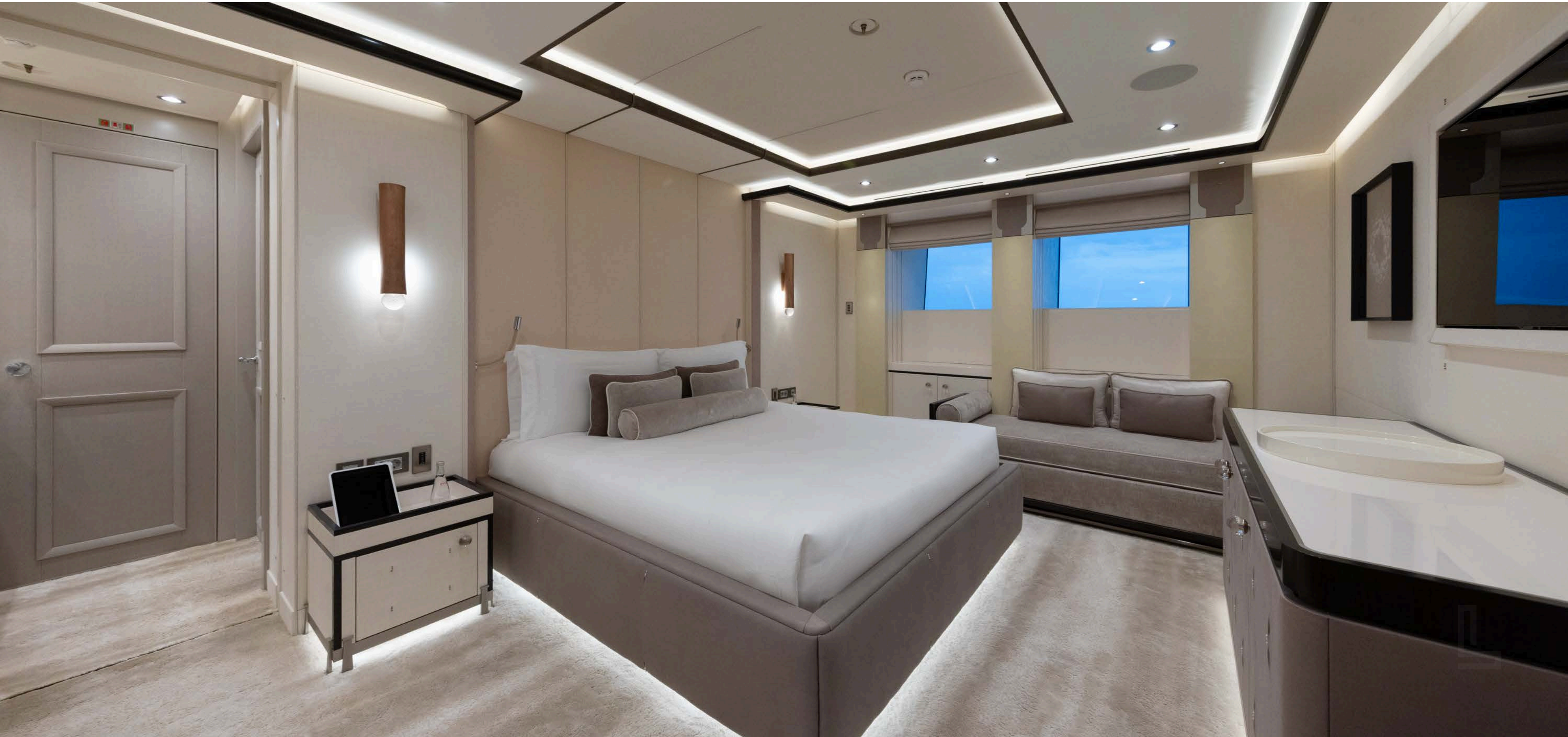
LUNA

MAIN DECK / DOUBLE GUEST CABIN



LUNA

MAIN DECK / DOUBLE GUEST CABIN



LUNA

MAIN DECK / DOUBLE GUEST CABIN



LUNA

MAIN DECK / BATHROOM



LUNA

MAIN DECK



Gymnasium

Step into luxury within the confines of a 70-square-meter studio that seamlessly blends wellness and opulence.

Enjoy panoramic sea views while engaging in a workout session with the state-of-the-art Technogym equipment.



LUNA

MAIN DECK / GYMNASIUM



LUNA

MAIN DECK / SAUNA



LUNA

MAIN DECK



Hammam

Immerse yourself in a luxurious retreat where a hammam and a walk-in rain shower await, creating a sanctuary adorned with opulence.



LUNA

MAIN DECK / HAMMAM



LUNA

MAIN DECK



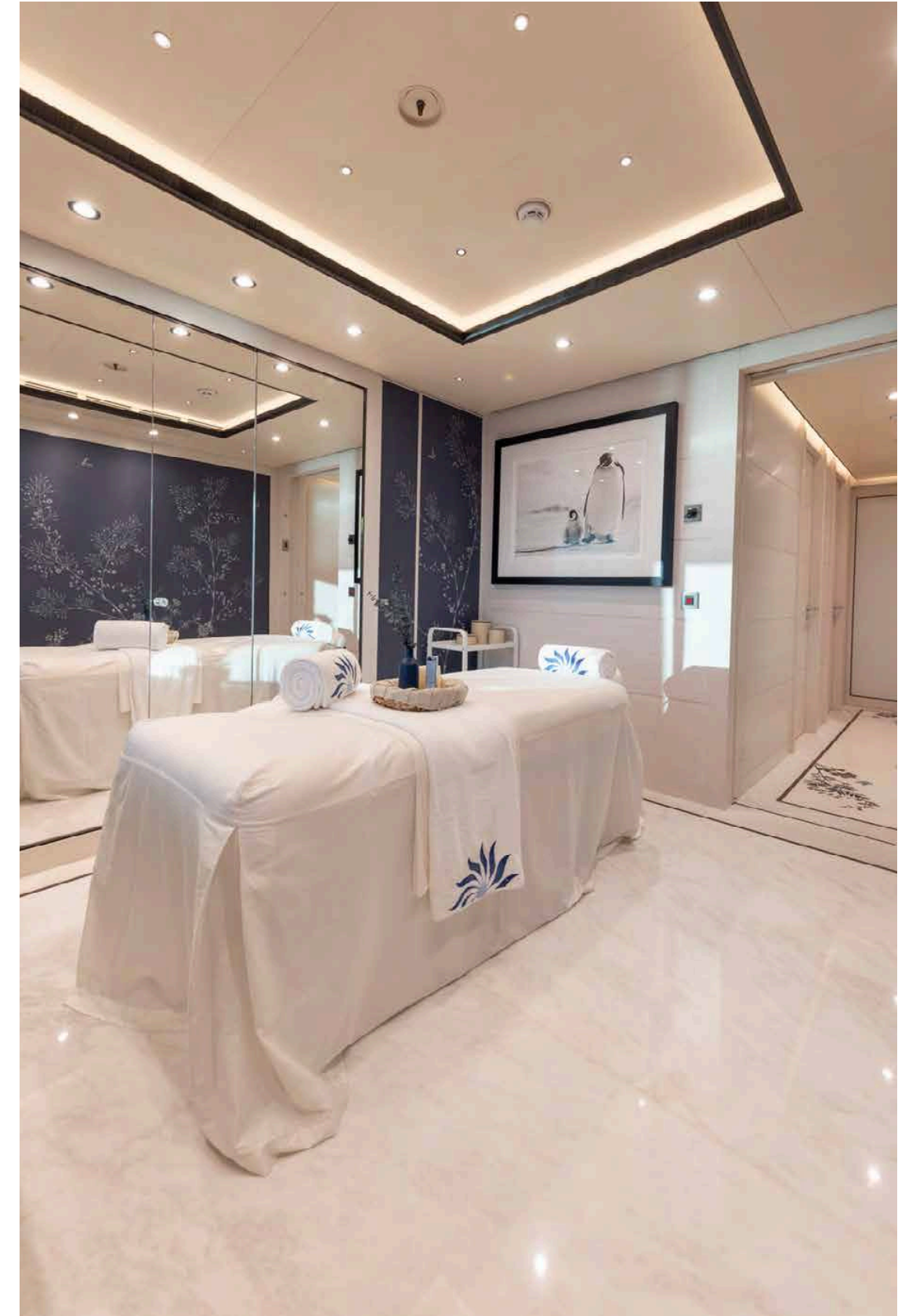
Spa Area

The ambience is elevated by Prussian blue silk wallpaper adorned with meticulously hand-painted and appliquéd Japanese flowers, creating an atmosphere of tranquillity and sophistication in the serene beauty salon.



LUNA

MAIN DECK / SPA AREA



General arrangement



LUNA

LOWER DECK / BEACH CLUB



LUNA

LOWER DECK / BEACH CLUB



LUNA

LOWER DECK / BEACH CLUB



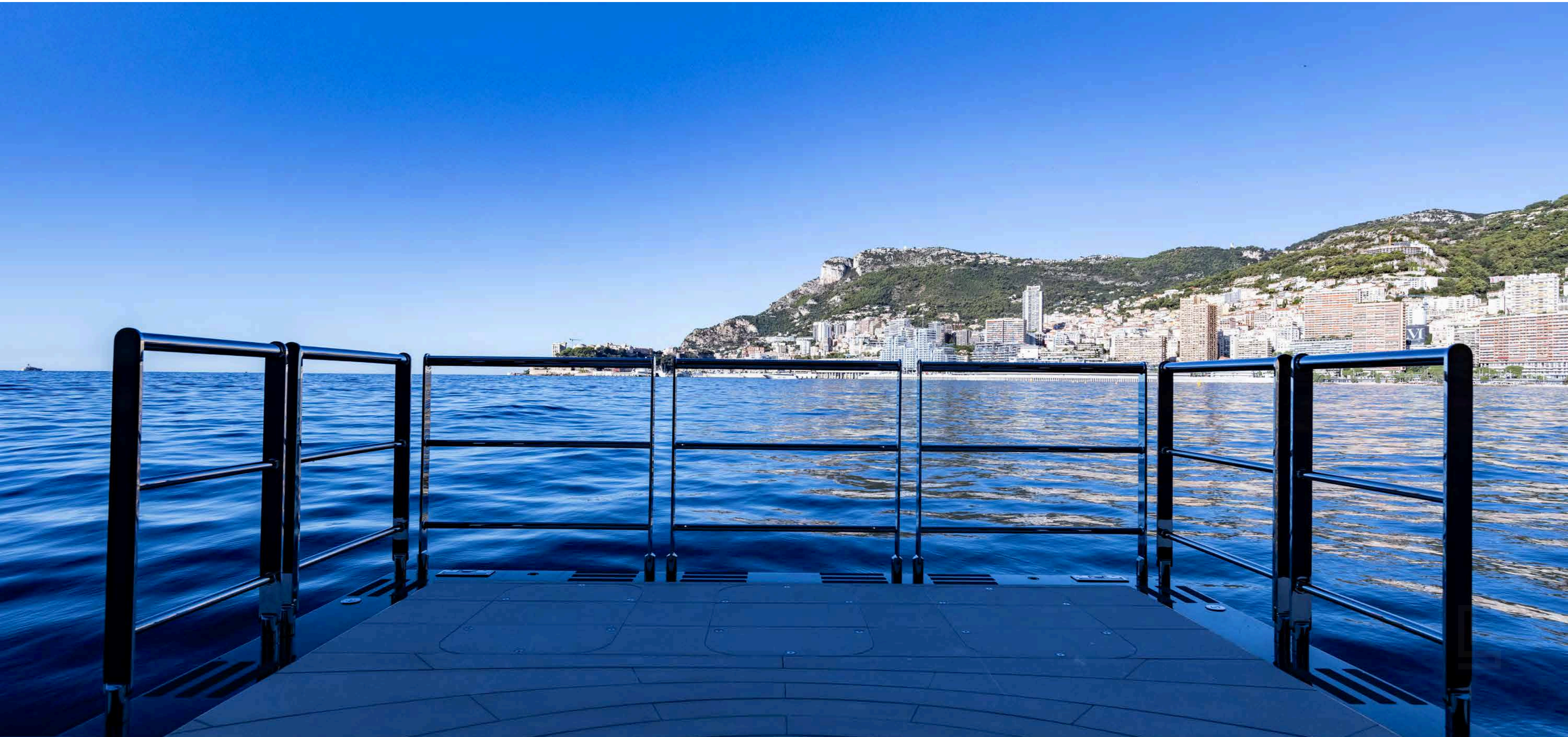
LUNA

LOWER DECK / SEA-LEVEL ENTRANCE



LUNA

LOWER DECK / SEA-LEVEL ENTRANCE



LUNA

LOWER DECK / SEA-LEVEL ENTRANCE



LUNA

LOWER DECK / SEA-LEVEL ENTRANCE



LUNA

LOWER DECK / TENDER GARAGE



LUNA

LOWER DECK / TENDER GARAGE



LUNA

Twin-win tenders

The two exquisite 10.5-meter Hodgdon tenders epitomize unparalleled excellence.

Both the limousine and open tender showcase a perfect blend of speed, stability, and exquisite craftsmanship.

These tenders stand as a seamless extension of the yacht, embodying the highest standards of quality and luxurious comfort.



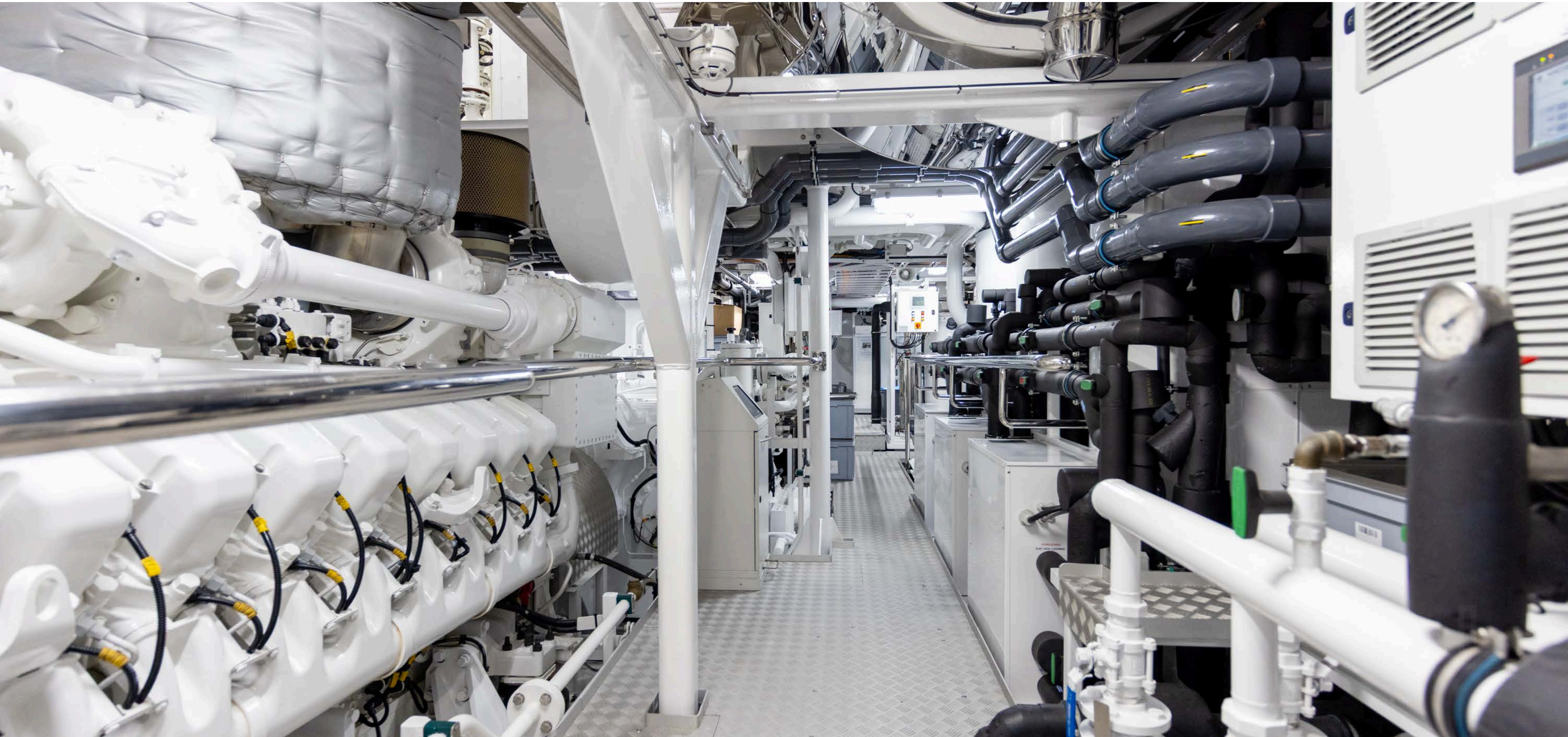
LUNA

LOWER DECK / TECHNICAL SPACE



LUNA

LOWER DECK / TECHNICAL SPACE



LUNA

UPPER DECK / NAVIGATION BRIDGE



LUNA

SPECIFICATIONS



LUNA

SPECIFICATIONS

CHARACTERISTICS

Name:	LUNA
Builder:	Oceanco
Year Built:	2018
Type:	Displacement Motor Yacht
Hull No.:	Y717
IMO:	1013066
Classification:	Lloyd's Register
Flag:	Cayman Islands
Naval Architect:	Azure Naval Architects B.V.
Exterior Designer:	Luiz de Basto Design
Interior Designer:	Nuvolari & Lenard Valentina Zannier Interiors (Refit 2024)
Construction:	Steel Hull Aluminium Superstructure Teak Decks
Displacement:	2,355
Heli Decks:	1x Fwd Deck - Max load 3.8t 1x Sun Deck - Max load 3.0t

DIMENSIONS

Length Overall:	90.00 m (295'3")
Length Waterline:	77.20 m (253'3")
Beam:	14.20 m (46'7")
Max Draft:	4.05 m (13'3")
Gross Tonnage:	2.926
Net Tonnage:	877





SPEED & RANGE UNDER POWER

Maximum Speed:	20 Knots
Cruising Speed:	13 Knots
Fuel Consumption:	Approx. 500 Litres / hour @ 13 Knots
Range:	5,500NM @ 13 Knots

CAPACITIES

Accommodation:	14 Guests in 7 cabins
Crew:	Up to 31 x Crew in 16 cabins
Fuel:	278,000 litres / 73,440 US gallons
Petrol:	1,000 litres / 264 US gallons
Fresh water:	115,000 litres / 33,380 US gallons
Holding tank:	14,700 litres / 3,883 US gallons
Lube oil:	5,000 litres / 1,321 US gallons
Dirty oil:	3,800 litres / 1,004 US gallons
Sludge:	5,900 litres / 1,559 US gallons
Grey water:	19,200 litres / 5,072 US gallons
Black water:	5,500 litres / 1,453 US gallons
Deck wash:	27,000 litres / 7,133 US gallons
Pool water:	20,000 litres / 5,283 US gallons

ACCOMMODATION

Owner:	1x Master cabin
Guest:	2x VIP cabins 4x Double cabins
Crew:	1x Captain cabin 1x Chief Officer cabin 15x Crew cabins 1x Staff cabin

LUNA

SPECIFICATIONS

MECHANICAL EQUIPMENT

Engines:	2 x 3,600kW (4,828Hp) MTU 20V 4000 M73L, Diesel
Engine hours:	5836 (port) as of January 2026 5825 (stbd) as of January 2026
Generators:	3 x 498kW (668Hp) MTU 12V M51A
Generator hours:	15645 (port) as of January 2026 15248 (centre) as of January 2026 13609 (stbd) as of January 2026
Gearbox:	Reintjes WAF 1963
Propulsion:	Twin Screw Fix Blade
Propellers:	2 x SIP Marine – 5 blades, 2500mm
Rudder angle y:	Mechanical, Analog & Digital
Steering system:	Rolls Royce
Stabilisers:	4 x Quantum QC2200XT – zero speed
Bow thruster:	Voith GmbH & Co. KGa 400kW in-line thruster
Stern thruster:	Veth 286kW foldable & Azumithing
Electricity:	400V / 240V / 24V
Shore power:	2 x transformers – 400V 50Hz 430kVA
Batteries:	UPS ABB New Mastervolt AGM instaled for: 2X main engines, 3 X generators, 1 X emergency generator
Chargers:	Siemens
Converters:	Siemens
Hydraulics:	Van Driel
Air conditioning:	Heinen & Hopmann
Water maker:	HEM 8040 Duplex
Water system:	Water Softener & AG – S Silver Ion Sterilizers
Toilet system:	EVAC
Sewage system:	Hamman
Fuel centrifuge:	SEPAR
Fuel separator:	Alfa Laval
Garbage converter:	OMPECO





NAVIGATION EQUIPMENT

Magnetic compass:	Cassens & Plath
Gyro compass:	2 x Raytheon Anschutz STD22 Raytheon Anschutz
Steering:	SAM Electronics NACOS Platinum
Automatic pilot echo:	ELAC LAZ5100
Sounder:	FarSounder 500
Sonar:	SAM Electronics NACOS Platinum
Radar:	SAM Electronics NACOS Platinum
DP:	SAAB R5
AIS:	3x SAAB R5
DGPS:	SAAB R5
GPS:	SAM Electronics NACOS Platinum
Chart plotter:	SAM 2918
Navtex:	SAM 4900
Log:	Observer
Wind & weather:	2x Senshin
Searchlights:	2x Panasonic
Camera(s):	Night Vision Camera – Vector Vision
Miscellaneous:	Horn - Kahlenberg

COMMUNICATION EQUIPMENT

Satcom:	Sailor FBB500, FBB150
VHF:	Sailor 6215, 6222, 2 x 6248
SSB:	Sailor 6301
Inmarsat C:	2x Sailor 6110
Iridium:	2x SC4000
Iridium:	Iridium Extreme mobile unit
Telephone exchange:	AVAYA
Intercom:	PA
VSAT:	2x Sea Tel 5012
Internet:	2x Starlink Maritime
GSM 4G/5G:	Pepwave



DECK EQUIPMENT

Anchor windlasses:	2 x Steen & Co GmbH
Aft warping capstans:	2 x Steen & Co GmbH
Anchors:	2 x HHP pull N type – 1,080 kg each
Anchor chains:	2 x 220 m – 36 mm Ø
Boat crane & davits:	Cramm
Passerelle:	Staalart
Side boarding ladder:	Hydromar - Port and starboard
Side boarding gangway:	Hydromar
Pool / jacuzzi:	Yes
	New wind-protection glass added – upper deck pool area (2021)
Swimming platform:	Yes
Guest elevator:	Yes
Awnings:	Amber
Covers:	Yes

ENTERTAINMENT EQUIPMENT

TV Antenna:	2x Sea Tel 6004
General:	Mediterranean: SKY UK, SKY Italy
	Caribbean: Direct TV
	Latin America DISH
	Airplay, Apple tv, Netflix, Amazon Prime, Disney, Paramount, Spotify
	X- Box
	Oculus YachtEye throughout the vessel
	All devices including light and temperature are I-pad controlled
	Backgammon, Chess, Cards, Monopoly



GALLEY & LAUNDRY EQUIPMENT

Galley:	<p>Bijvanck central cooking island, including: 8x Induction plates, food heat lamp, griddle plate, Giorik salamander, double fryer, cold water tap. 2x Rational (self-cooking centre) ovens Effeuno pizza oven Foster under-counter freezer Sirman blast freezer Wessamat ice machine 2x Gram undercounter fridges Hobart dishwasher Zip Hydrotap Panasonic microwave Large walk-in fridge Various accessories</p>
Pantry:	<p>Main deck, upper deck & owner's deck: Fridges, ice makers, Zip Hydrotaps, microwaves, wine cooler fridges, etc.</p>
Laundry:	<p>5 x Miele professional washing machines 5 x Miele professional dryers Ghidini steam iron Miele rotary iron</p>

SECURITY & SAFETY EQUIPMENT

Safety:	<p>EPIRB Sailor SE406-11 2 x SART Sailor 11.9 GHz</p>
Security:	<p>Kaba central anti-intrusion system 2 x anti-piracy water cannons</p>
Fire fighting:	<p>Monitoring & alarm system Consillium Hi-Fog system Marioff</p>

LUNA

SPECIFICATIONS

TENDERS & WATER-SPORTS EQUIPMENT

- Inflatables:**
- 1 x sailboat – Tiwal inflatable
 - 1 x 10 x 6.6 m inflatable pool – Freestyle
 - 1 x Zorb (sphere for a person to step into and roll on the water)
 - 1 x 1-person SUP – Red Paddle
 - 1 x 3-person SUP – Red Paddle
- Towables:**
- 1 x windsurf – Fanatic
 - 1 x kitesurf – Cabrinha 12 m²
 - 1 x kitesurf – Cabrinha 8 m²
 - 1 x waterski – Jobe
 - 1 x kneeboard – Jobe
 - 1 x wakeboard – Jobe
 - Towables Jobe (banana, donut, Binar, Sonar)
- Accessories:**
- 1 x 15 m slide – Freestyle
 - 1 x Liquid Force magic carpet 6' x 18'
 - Life vests and helmets – Liquid Force
- Tenders:**
- 1 x 10.50 m Hodgdon Yachts custom open
 - 1 x 10.50 m Hodgdon Yachts custom limo
 - 1 x 6.20 m Cobra Patronus crew tender
- Toys:**
- 1 x WaveRunner Sea-Doo GTR STD 230 (2021)
 - 1 x JetSurf Ultra Sport
 - 1 x Fliteboard
 - 1 x AirDrone – DJI Inspire 2
 - 1 x underwater drone – iBubble
 - 2 x WaveRunner Sea-Doo GTX LTD 300 (2021)
 - 2 x 1-person Prijon kayak
 - 4 x 2-person Biwok kayak
 - 4 x Seabob Kayago F5 SR
 - 5 x Gocycle bicycle



LUNA

SPECIFICATIONS

DIVING EQUIPMENT

- BCD: Scuba Pro
- Tanks: Luxfer – 11 lt and 9 lt
- Regulators: Apex
- Wet suits: Scuba Pro – 3 mm and 5 mm (short and long)
- Fins: Mares
- Masks: Atomic Aquatics, Ocean Reef
- Boots: Scuba Pro
- Weights: Scuba
- Pro computer: Suunto
- Cameras: GoPro
- Assortment of snorkelling gear: Cressi, Ocean Reef

GYMNASIUM & WELLNESS

- | | |
|-------------------|--|
| Gymnasium: | 1 x Skillrun Technogym
1 x bike Technogym
1 x Excite Synchro
Technogym weights
Yoga mats |
| Wellness: | Hammam
Sauna
Massage / beauty salon |



LUNA



LUNA

LUNA

Disclaimer
This document is not contractual. All specifications are given in good faith and offered for informational purposes only. The publisher and company do not warrant or assume any legal liability or responsibility for the accuracy, completeness, or usefulness of any information and/or images displayed. Yacht inventory, specifications and prices are subject to change without prior notice. None of the text and/or images used in this brochure may be reproduced without written consent from the publisher.