



LARGEYACHT.CO

ALE.MIA

FOR SALE

ITALCRAFT | 30.97 M (101.6 FT) | 2008 / 2018

ALE.MIA

INTRODUCTION

A bold expression of Italian performance and design, crafted for those who demand both speed and style.

This rare Italcraft 105 Maxi Drago open yacht features striking lines by Caputi Studio, a unique 5-cabin layout, and an expansive deck ideal for entertaining. Offering up to 41 knots of thrilling performance, she blends power with elegance in a way only Italian yachts can.

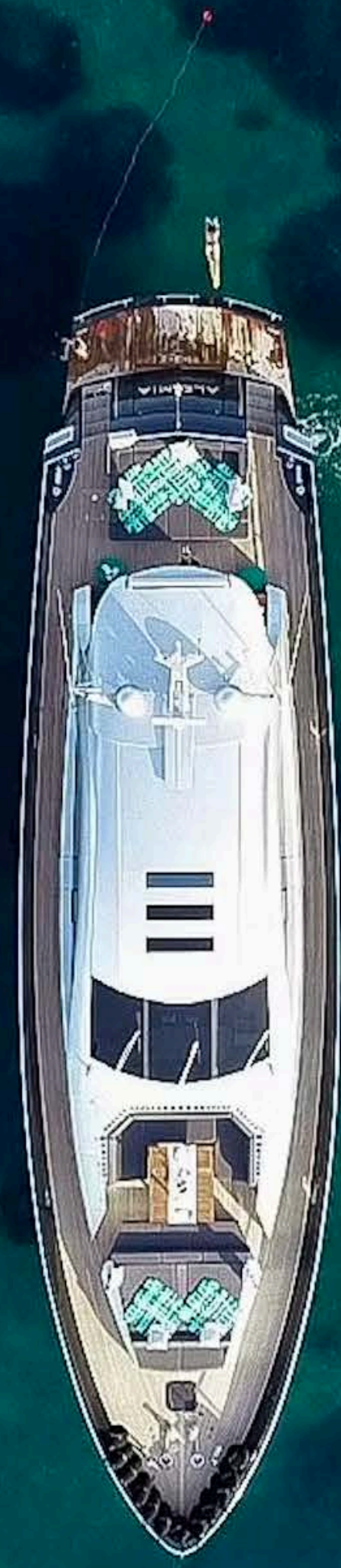
With VAT paid, low engine hours, ALE.MIA is a truly exceptional opportunity.

ASKING PRICE

€ 2,950,000 (VAT PAID)



ALE.MIA



Key features

Built under RINA classification

Rare five-cabin layout

Unique Caputi design

Low engine hours

Sleek timeless profile

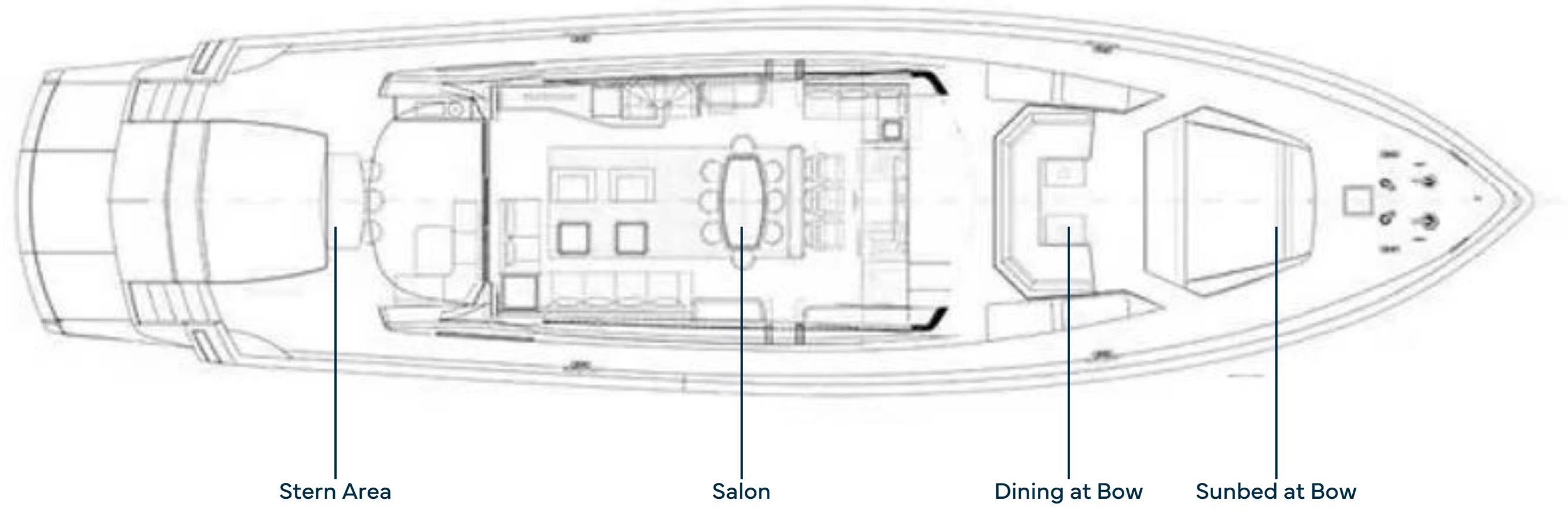
High performance speed



ALE.MIA

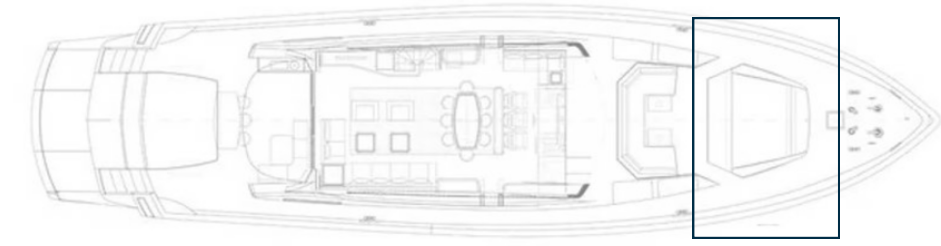


General arrangement



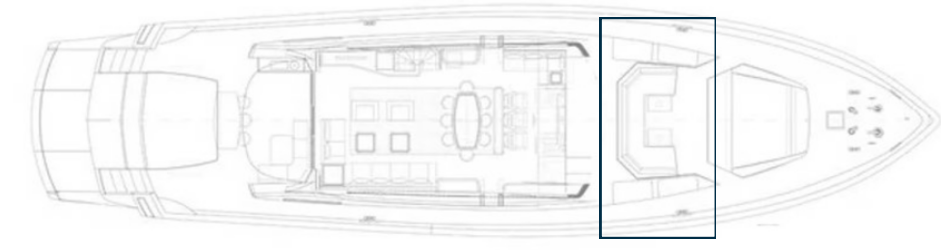
ALE.MIA

MAIN DECK / SUNBED AT BOW



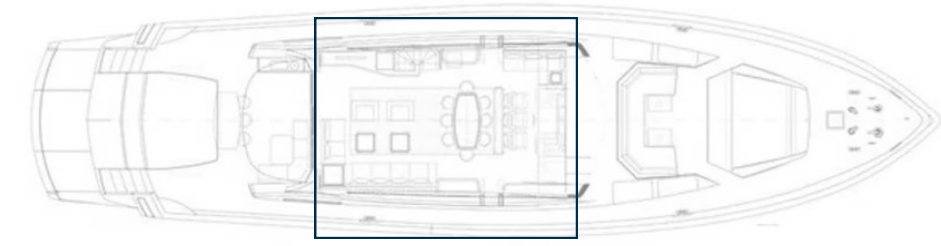
ALE.MIA

MAIN DECK / SUNBED AT BOW



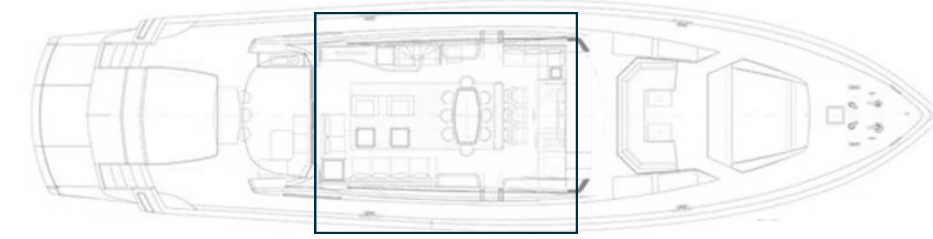
ALE.MIA

MAIN DECK / SALON



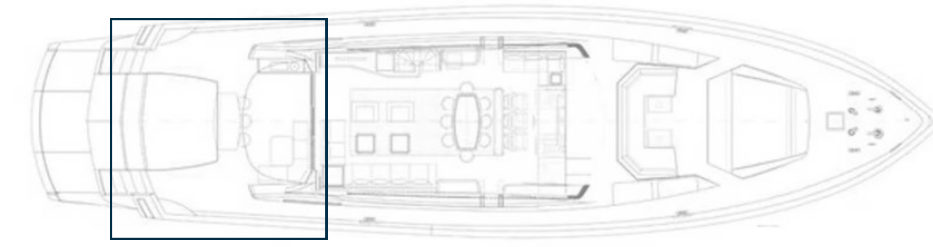
ALE.MIA

MAIN DECK / SALON



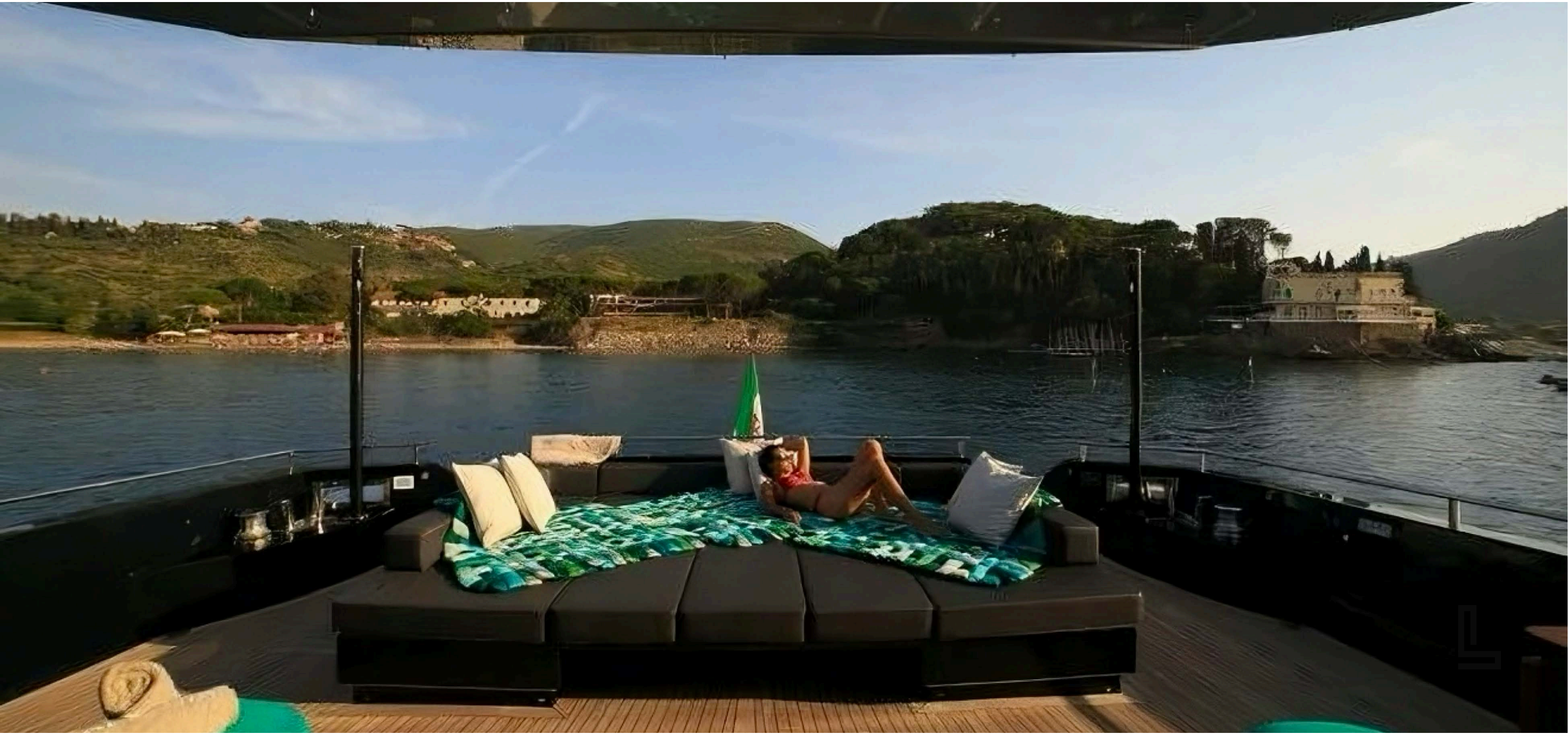
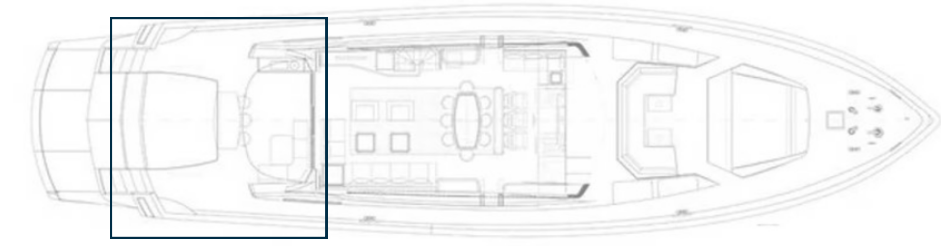
ALE.MIA

MAIN DECK / STERN AREA



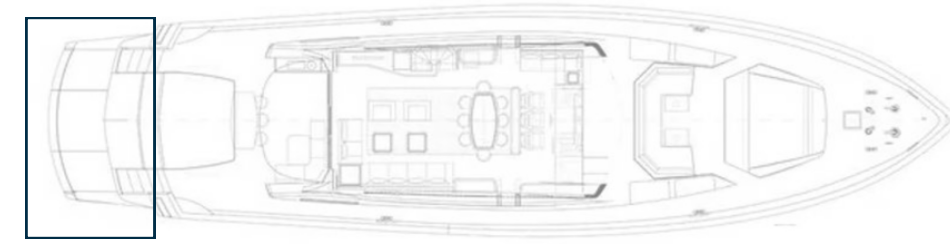
ALE.MIA

MAIN DECK / STERN AREA

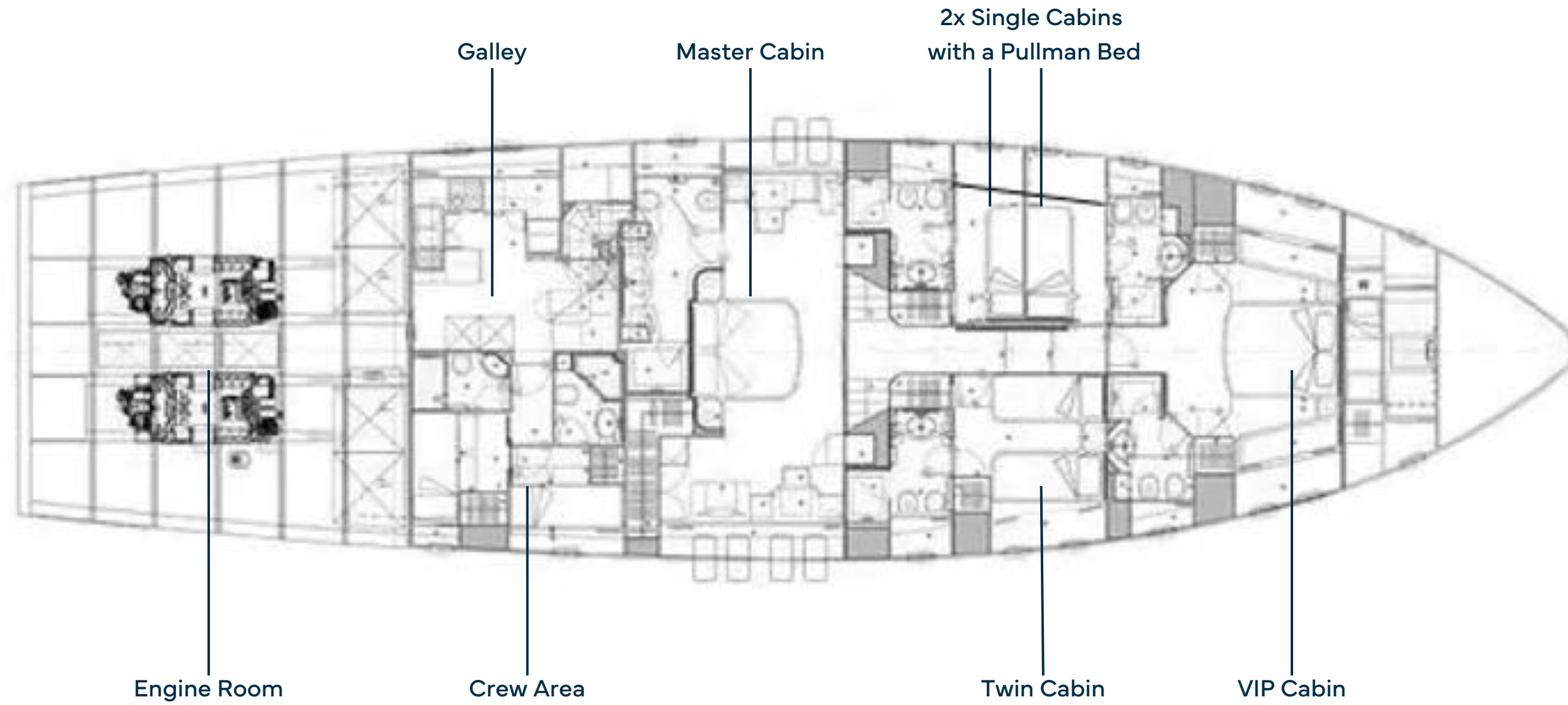


ALE.MIA

MAIN DECK / STERN AREA



General arrangement



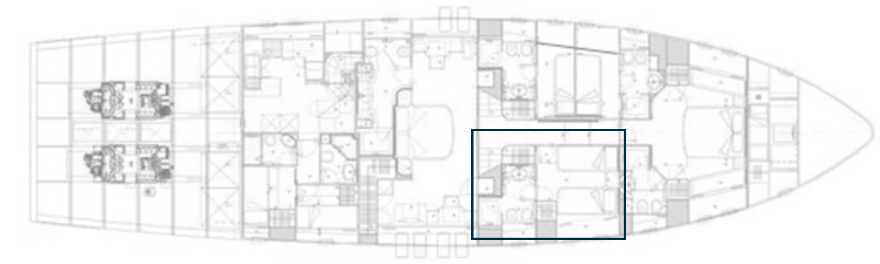
ALE.MIA

LOWER DECK / VIP CABIN



ALE.MIA

LOWER DECK / VIP CABIN



ALE.MIA

LOWER DECK / BATHROOM



ALE.MIA

LOWER DECK / TWIN CABIN



ALE.MIA

LOWER DECK



ALE.MIA

LOWER DECK / SINGLE CABIN WITH PULLMAN BED



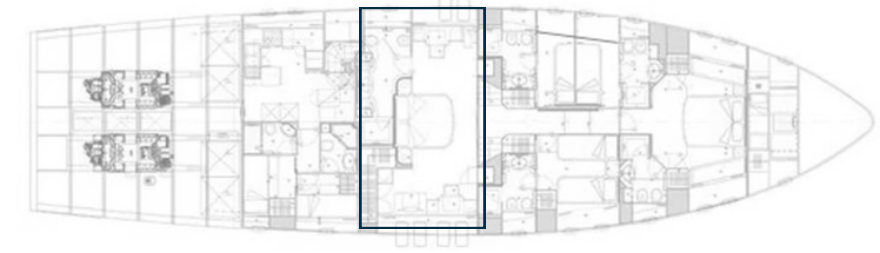
ALE.MIA

LOWER DECK / SINGLE CABIN WITH PULLMAN BED



ALE.MIA

LOWER DECK / MASTER CABIN



ALE.MIA

LOWER DECK / MASTER CABIN



ALE.MIA

LOWER DECK / BATHROOM



ALE.MIA

LOWER DECK / GALLEY



ALE.MIA

SPECIFICATIONS



CHARACTERISTICS

Name:	Ale.Mia
Builder:	Italcraft
Model:	105 Maxi Drago
Hull Number:	03
Year Built/Refit:	2008 / 2018
Type:	Motor Yacht
Classification:	RINA
Flag:	Italy
Naval Architect:	Caputi Studio
Exterior Designer:	Caputi Studio
Interior Designer:	Caputi Studio
Construction:	GRP
	Laid Teak Decks

DIMENSIONS

Length Overall:	30.97 m (101' 6")
Length Waterline:	28.50 m (93' 6")
Beam:	7.94 m (26' 05")
Depth:	3.14 m (10' 03")
Gross Tonnage:	141
Net Tonnage:	42
Displacement:	103.86 t

SPEED & RANGE UNDER POWER

Maximum Speed:	41 knots
Cruising Speed:	35 knots
Range:	400 nm





INTERIOR LAYOUT & FEATURES

Accommodation:	1 × Master Cabin 1 × VIP Cabin 1 × Twin Cabin 2 × Single Cabins with a Pullman Bed
Crew:	2 × Twin Cabins with a Pullman Bed 1 × Single Cabin
Galley:	Fully Equipped with: Fridge/Freezer, Wine Cooler, Induction Stove (4 Burners), Oven, Dishwasher, Washer/Dryer, Stainless Sinks, Dumbwaiter
Main Deck:	Helm Station: 3 Pilot Chairs (Besenzoni Center), Chart Desk, Concealed TV, Electronics Salon: Dining for 6, Lounge Area, Dumbwaiter
Interior Furnishings:	Leather-Tiled Guest Corridor Carpet Throughout Lower Cabins



EXTERIOR LAYOUT

Foredeck:	Anchor Station with 2 Winches, Cleats, Fairleads Sunpad Area with Seating Hydraulic Storage Lockers Bimini Top with 4 × Support Poles
Aft Cockpit:	Sink + Ice Maker Secondary Helm Station with Thruster/Motor Controls Aft Sunpad + Storage Cleats and Mooring Gear
Garage:	Hydraulic Hatch Tender Storage

DECK GEAR

Windlasses:	2 × Lofran's Project X4, 24V – 2000W
Mooring Winches:	2 × Lofran's Capstan, 24V – 1200W
Anchor:	2 × Stainless Steel
Chain:	Galvanized Steel
Cleats:	Full Set (Bow, Midship, Stern, Platform)
Passerelle:	Hydraulic, Port Side
Thrusters:	2 × Bow + 2 × Stern (4-Blade)
Hydraulic Center Section:	Teak-Finished

NAVIGATION ELECTRONICS

Main Helm:	ZF Electronic Throttle Simrad AP50 Autopilot Simrad AR78 Gyrocompass Simrad IS15 Rudder Angle Magnetic Compass: Plath 2 × Raymarine Multifunction Displays 1 × Automation Screen Satellite Phone: Thrane & Thrane VHF: Raymarine Ray240E Lofran's Windlass Controller Raymarine ST70 Multifunction Display Mimic Panel for: Fire Alarm, Bilge Pumps, Tank Levels, Open Hatches
Aft Helm (cockpit):	ZF Electronic Throttle Side-Power Thruster Control Start/Stop Engine Buttons

SAFETY EQUIPMENT

Life Jackets: Compliant
Life Rafts: 2 × Eurovinil Syntesy (8-person)
Fire System: LAM CO₂ Suppression
Portable Extinguishers: 1 kg Powder, 1 per Area
Bilge System: 5 Electric + 2 Manual Pumps



MECHANICAL EQUIPMENT

Engine Type:	Inboard Diesel
Engines:	2 × MTU 16V 2000 M93 (2,400 hp / 1,790 kW each)
Power Output:	2 × 790 kW @ 2,450 rpm
Serial Numbers:	536107674 / 536107675
Engine Hours:	1,600 hours as of July 2025
Gearboxes:	2 × ZF 3060-A, 2.952:1 (SN: 50025144 / 50025145)
Surface Drives:	Top System
Propellers:	2 × Blade
Generators:	2 × Kohler 27 kW
Generator Hours:	4,600 hours as of July 2025
Fuel Capacity:	10,000 L
Propulsion:	Top System Surface Drives ZF Flange-Mounted Reduction Gears (1:2 Ratio) Custom Radice 5-Blade Fixed Pitch Propellers
Main Panel Location:	Engine Room
Battery Banks:	4 × AGM (Engines) 18 × AGM (Services) 2 × AGM (Generators)
Generators:	2 × Kohler 27EFOZD 27 kW – 380V – 4,600 hours SN: 2164513 / 2165601
Charges:	2 × Tecnonautica Skylla 100A 24V
Inverter:	Yes
Shore Power:	Yes (with 30 kVA Euroelettro Isolation Transformer, IP23)
CCTV System:	4 Cameras (2 Engine Room, 2 Cockpit)

TENDER

Genius 6m, Suzuki 22.1 kW



TANKS & SYSTEMS

- Fresh Water System:** 4 Tanks ~3,000 L Total
2 x Circulation Pumps
2 x Boilers (100 L Each, 3 kW)
Shore Connection + Water Intake
Watermaker: Tecnicomar Sailor 1500
Purifier: Idromar Idrofast 9100
- Black/Grey Water:** 1 Holding Tank: 1,040 L
7 x Tecma WCs
Med-Approved Selmar Blackwater Treatment System
- Fuel System:** 2 x Peralluman 5154 Tanks (~9,300 L)
Racor Filters
Filtered with Cartridges
- Hydraulics:** For: Propulsion, Flaps, Passerelle, Hatch Doors,
Air Conditioning: Bow/Stern Thrusters
Dedicated and Engine-Driven Pumps
Frigomar
Model: Series 410

ENTERTAINMENT EQUIPMENT

- Hi-Fi Sound Systems in All Interior and Exterior Guest Areas
TVs in All Cabins
Starlink Internet Connectivity

REFIT LIST

- 2018: Hull and Superstructure Fully Repainted



ALE.MIA



Disclaimer

This document is not contractual. All specifications are given in good faith and offered for informational purposes only. The publisher and company do not warrant or assume any legal liability or responsibility for the accuracy, completeness, or usefulness of any information and/or images displayed. Yacht inventory, specifications and prices are subject to change without prior notice. None of the text and/or images used in this brochure may be reproduced without written consent from the publisher.



LARGEYACHT.CO

**FOR INQUIRIES &
MORE INFORMATION CONTACT**

MARTIN BOILLY

Sales Broker

M: +337 680 867 622 | **E:** mb@largeyacht.co

O: 25 Boulevard Albert 1er, 98000 Monaco

www.largeyacht.co

